

**NUDT21 Antibody (monoclonal) (M01)****Mouse monoclonal antibody raised against a full length recombinant NUDT21.****Catalog # AT3129a****Specification**

---

**NUDT21 Antibody (monoclonal) (M01) - Product Information**

|                   |                          |
|-------------------|--------------------------|
| Application       | WB, E                    |
| Primary Accession | <a href="#">O43809</a>   |
| Other Accession   | <a href="#">BC001403</a> |
| Reactivity        | Human                    |
| Host              | mouse                    |
| Clonality         | Monoclonal               |
| Isotype           | IgG1 Kappa               |
| Calculated MW     | 26227                    |

**NUDT21 Antibody (monoclonal) (M01) - Additional Information****Gene ID** 11051**Other Names**

Cleavage and polyadenylation specificity factor subunit 5, Cleavage and polyadenylation specificity factor 25 kDa subunit, CFIm25, CPSF 25 kDa subunit, Nucleoside diphosphate-linked moiety X motif 21, Nudix motif 21, Pre-mRNA cleavage factor Im 25 kDa subunit, NUDT21, CFIM25, CPSF25, CPSF5

**Target/Specificity**

NUDT21 (AAH01403, 1 a.a. ~ 227 a.a) full-length recombinant protein with GST tag. MW of the GST tag alone is 26 KDa.

**Dilution**

WB~~1:500~1000

E~~N/A

**Format**

Clear, colorless solution in phosphate buffered saline, pH 7.2 .

**Storage**

Store at -20°C or lower. Aliquot to avoid repeated freezing and thawing.

**Precautions**

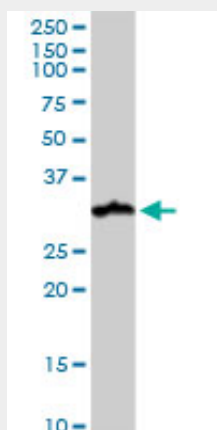
NUDT21 Antibody (monoclonal) (M01) is for research use only and not for use in diagnostic or therapeutic procedures.

**NUDT21 Antibody (monoclonal) (M01) - Protocols**

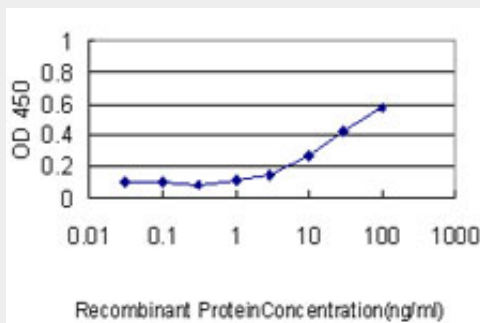
Provided below are standard protocols that you may find useful for product applications.

- [Western Blot](#)
- [Blocking Peptides](#)
- [Dot Blot](#)
- [Immunohistochemistry](#)
- [Immunofluorescence](#)
- [Immunoprecipitation](#)
- [Flow Cytometry](#)
- [Cell Culture](#)

### NUDT21 Antibody (monoclonal) (M01) - Images



NUDT21 monoclonal antibody (M01), clone 2G4-6F11. Western Blot analysis of NUDT21 expression in human kidney.



Detection limit for recombinant GST tagged NUDT21 is approximately 1ng/ml as a capture antibody.

### NUDT21 Antibody (monoclonal) (M01) - Background

The protein encoded by this gene is one subunit of a cleavage factor required for 3' RNA cleavage and polyadenylation processing. The interaction of the protein with the RNA is one of the earliest steps in the assembly of the 3' end processing complex and facilitates the recruitment of other processing factors. This gene encodes the 25kD subunit of the protein complex, which is composed of four polypeptides.

### NUDT21 Antibody (monoclonal) (M01) - References

Structural basis of UGUA recognition by the Nudix protein CFI(m)25 and implications for a regulatory role in mRNA 3' processing. Yang Q, et al. Proc Natl Acad Sci U S A, 2010 Jun 1. PMID 20479262. The crystal structure of human cleavage and polyadenylation specific factor-5 reveals a dimeric Nudix protein with a conserved catalytic site. Tr saugues L, et al. Proteins, 2008 Dec. PMID 18767156. Crystal structure of the 25 kDa subunit of human cleavage factor Im. Coseno M, et al.

Nucleic Acids Res, 2008 Jun. PMID 18445629. Large-scale mapping of human protein-protein interactions by mass spectrometry. Ewing RM, et al. Mol Syst Biol, 2007. PMID 17353931. Multiple histone deacetylases and the CREB-binding protein regulate pre-mRNA 3'-end processing. Shimazu T, et al. J Biol Chem, 2007 Feb 16. PMID 17172643.