

NUDT21 Antibody (monoclonal) (M12)**Mouse monoclonal antibody raised against a full length recombinant NUDT21.****Catalog # AT3130a****Specification**

NUDT21 Antibody (monoclonal) (M12) - Product Information

Application	WB, IHC, IF, E
Primary Accession	O43809
Other Accession	BC001403
Reactivity	Human
Host	mouse
Clonality	Monoclonal
Isotype	IgG1 Kappa
Calculated MW	26227

NUDT21 Antibody (monoclonal) (M12) - Additional Information**Gene ID** 11051**Other Names**

Cleavage and polyadenylation specificity factor subunit 5, Cleavage and polyadenylation specificity factor 25 kDa subunit, CFIm25, CPSF 25 kDa subunit, Nucleoside diphosphate-linked moiety X motif 21, Nudix motif 21, Pre-mRNA cleavage factor Im 25 kDa subunit, NUDT21, CFIM25, CPSF25, CPSF5

Target/Specificity

NUDT21 (AAH01403, 1 a.a. ~ 227 a.a) full-length recombinant protein with GST tag. MW of the GST tag alone is 26 KDa.

Dilution

WB~~1:500~1000

IHC~~1:100~500

IF~~1:50~200

E~~N/A

Format

Clear, colorless solution in phosphate buffered saline, pH 7.2 .

Storage

Store at -20°C or lower. Aliquot to avoid repeated freezing and thawing.

Precautions

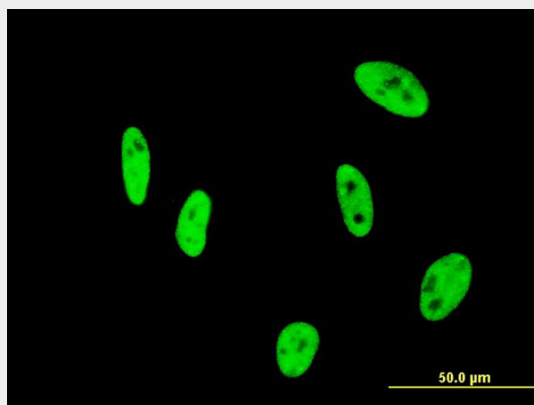
NUDT21 Antibody (monoclonal) (M12) is for research use only and not for use in diagnostic or therapeutic procedures.

NUDT21 Antibody (monoclonal) (M12) - Protocols

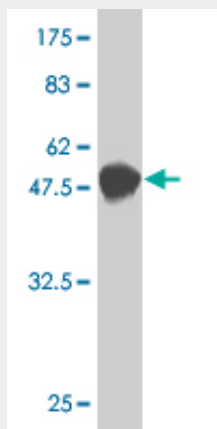
Provided below are standard protocols that you may find useful for product applications.

- [Western Blot](#)
- [Blocking Peptides](#)
- [Dot Blot](#)
- [Immunohistochemistry](#)
- [Immunofluorescence](#)
- [Immunoprecipitation](#)
- [Flow Cytometry](#)
- [Cell Culture](#)

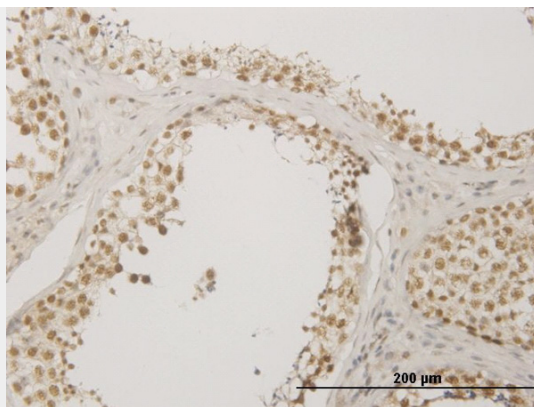
NUDT21 Antibody (monoclonal) (M12) - Images



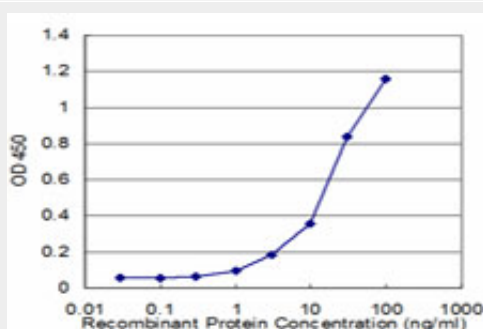
Immunofluorescence of monoclonal antibody to NUDT21 on HeLa cell . [antibody concentration 10 ug/ml]



Antibody Reactive Against Recombinant Protein. Western Blot detection against Immunogen (50.71 KDa) .



Immunoperoxidase of monoclonal antibody to NUDT21 on formalin-fixed paraffin-embedded human testis. [antibody concentration 3 ug/ml]



Detection limit for recombinant GST tagged NUDT21 is approximately 3ng/ml as a capture antibody.

NUDT21 Antibody (monoclonal) (M12) - Background

The protein encoded by this gene is one subunit of a cleavage factor required for 3' RNA cleavage and polyadenylation processing. The interaction of the protein with the RNA is one of the earliest steps in the assembly of the 3' end processing complex and facilitates the recruitment of other processing factors. This gene encodes the 25kD subunit of the protein complex, which is composed of four polypeptides.

NUDT21 Antibody (monoclonal) (M12) - References

Structural basis of UGUA recognition by the Nudix protein CFI(m)25 and implications for a regulatory role in mRNA 3' processing. Yang Q, et al. Proc Natl Acad Sci U S A, 2010 Jun 1. PMID 20479262. The crystal structure of human cleavage and polyadenylation specific factor-5 reveals a dimeric Nudix protein with a conserved catalytic site. Tr?saugues L, et al. Proteins, 2008 Dec. PMID 18767156. Crystal structure of the 25 kDa subunit of human cleavage factor Im. Coseno M, et al. Nucleic Acids Res, 2008 Jun. PMID 18445629. Large-scale mapping of human protein-protein interactions by mass spectrometry. Ewing RM, et al. Mol Syst Biol, 2007. PMID 17353931. Multiple histone deacetylases and the CREB-binding protein regulate pre-mRNA 3'-end processing. Shimazu T, et al. J Biol Chem, 2007 Feb 16. PMID 17172643.