

**NXF2 Antibody (monoclonal) (M08)****Mouse monoclonal antibody raised against a partial recombinant NXF2.****Catalog # AT3140a****Specification**

---

**NXF2 Antibody (monoclonal) (M08) - Product Information**

Application	WB
Primary Accession	<a href="#">O9GZY0</a>
Other Accession	<a href="#">BC015020</a>
Reactivity	Human
Host	mouse
Clonality	Monoclonal
Isotype	IgG2a Kappa
Calculated MW	71627

**NXF2 Antibody (monoclonal) (M08) - Additional Information****Gene ID** 56001;728343**Other Names**

Nuclear RNA export factor 2, Cancer/testis antigen 39, CT39, TAP-like protein 2, TAPL-2, NXF2, TAPL2

**Target/Specificity**

NXF2 (AAH15020.1, 95 a.a. ~ 168 a.a) partial recombinant protein with GST tag. MW of the GST tag alone is 26 KDa.

**Dilution**

WB~~1:500~1000

**Format**

Clear, colorless solution in phosphate buffered saline, pH 7.2 .

**Storage**

Store at -20°C or lower. Aliquot to avoid repeated freezing and thawing.

**Precautions**

NXF2 Antibody (monoclonal) (M08) is for research use only and not for use in diagnostic or therapeutic procedures.

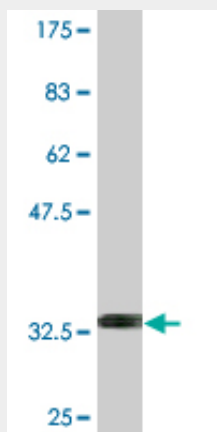
**NXF2 Antibody (monoclonal) (M08) - Protocols**

Provided below are standard protocols that you may find useful for product applications.

- [Western Blot](#)
- [Blocking Peptides](#)
- [Dot Blot](#)

- [Immunohistochemistry](#)
- [Immunofluorescence](#)
- [Immunoprecipitation](#)
- [Flow Cytometry](#)
- [Cell Culture](#)

#### **NXF2 Antibody (monoclonal) (M08) - Images**



Antibody Reactive Against Recombinant Protein. Western Blot detection against Immunogen (33.88 kDa) .

#### **NXF2 Antibody (monoclonal) (M08) - Background**

This gene is one of a family of nuclear RNA export factor genes. It encodes a protein that is involved in mRNA export, is located in the nucleoplasm, and is associated with the nuclear envelope. Alternative splicing seems to be a common mechanism in this gene family. Two variants have been found for this gene.

#### **NXF2 Antibody (monoclonal) (M08) - References**

Is there a role for the nuclear export factor 2 gene in male infertility? Stouffs K, et al. Fertil Steril, 2008 Nov. PMID 18258234. Toward a confocal subcellular atlas of the human proteome. Barbe L, et al. Mol Cell Proteomics, 2008 Mar. PMID 18029348. Nuclear export factor family protein participates in cytoplasmic mRNA trafficking. Tretyakova I, et al. J Biol Chem, 2005 Sep 9. PMID 16014633. The DNA sequence of the human X chromosome. Ross MT, et al. Nature, 2005 Mar 17. PMID 15772651. The status, quality, and expansion of the NIH full-length cDNA project: the Mammalian Gene Collection (MGC). Gerhard DS, et al. Genome Res, 2004 Oct. PMID 15489334.