

NXT1 Antibody (monoclonal) (M08)**Mouse monoclonal antibody raised against a full length recombinant NXT1.****Catalog # AT3141a****Specification**

NXT1 Antibody (monoclonal) (M08) - Product Information

Application	WB, IF, E
Primary Accession	Q9UKK6
Other Accession	BC000759
Reactivity	Human
Host	mouse
Clonality	Monoclonal
Isotype	IgG1 Lambda
Calculated MW	15847

NXT1 Antibody (monoclonal) (M08) - Additional Information**Gene ID** 29107**Other Names**

NTF2-related export protein 1, Protein p15, NXT1

Target/Specificity

NXT1 (AAH00759, 1 a.a. ~ 140 a.a) full-length recombinant protein with GST tag. MW of the GST tag alone is 26 KDa.

Dilution

WB~~1:500~1000

IF~~1:50~200

E~~N/A

Format

Clear, colorless solution in phosphate buffered saline, pH 7.2 .

Storage

Store at -20°C or lower. Aliquot to avoid repeated freezing and thawing.

Precautions

NXT1 Antibody (monoclonal) (M08) is for research use only and not for use in diagnostic or therapeutic procedures.

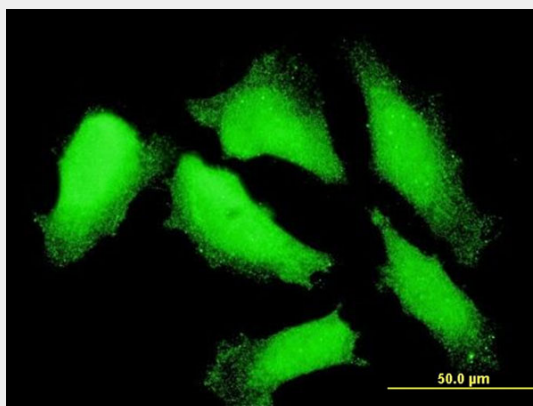
NXT1 Antibody (monoclonal) (M08) - Protocols

Provided below are standard protocols that you may find useful for product applications.

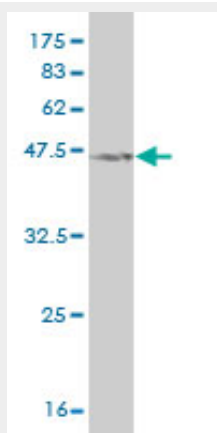
- [Western Blot](#)
- [Blocking Peptides](#)

- [Dot Blot](#)
- [Immunohistochemistry](#)
- [Immunofluorescence](#)
- [Immunoprecipitation](#)
- [Flow Cytometry](#)
- [Cell Culture](#)

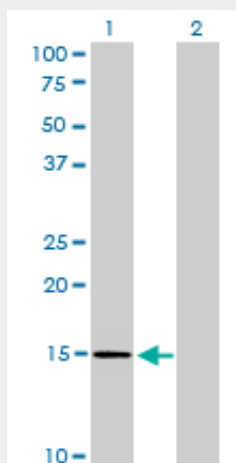
NXT1 Antibody (monoclonal) (M08) - Images



Immunofluorescence of monoclonal antibody to NXT1 on HeLa cell . [antibody concentration 10 ug/ml]



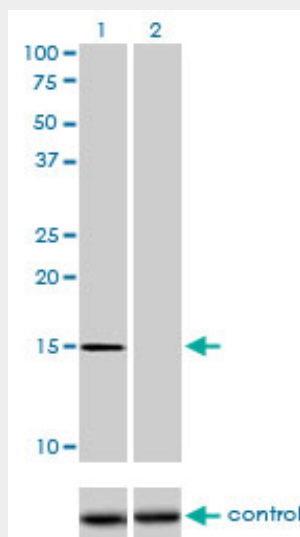
Antibody Reactive Against Recombinant Protein. Western Blot detection against Immunogen (41.14 KDa) .



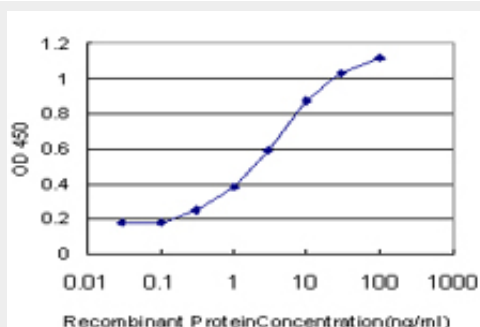
Western Blot analysis of NXT1 expression in transfected 293T cell line by NXT1 monoclonal antibody (M08), clone 4F11.

Lane 1: NXT1 transfected lysate(15.51 KDa).

Lane 2: Non-transfected lysate.



Western blot analysis of NXT1 over-expressed 293 cell line, cotransfected with NXT1 Validated Chimera RNAi (Cat # AT3141a)



Detection limit for recombinant GST tagged NXT1 is approximately 0.3ng/ml as a capture antibody.

NXT1 Antibody (monoclonal) (M08) - Background

The protein encoded by this gene is located in the nuclear envelope. It has protein similarity to nuclear transport factor 2. This protein functions as a nuclear export factor in both RAN (Ras-related nuclear protein)- and CRM1 (required for chromosome region maintenance)-dependent pathways. It is found to stimulate the export of U1 snRNA in RAN- and CRM1-dependent pathways and the export of tRNA and mRNA in a CRM1-independent pathway. The encoded protein heterodimerizes with Tap protein and may regulate the ability of Tap protein to mediate nuclear mRNA export. The use of alternate polyadenylation sites has been found for this gene.

NXT1 Antibody (monoclonal) (M08) - References

An empirical framework for binary interactome mapping. Venkatesan K, et al. Nat Methods, 2009 Jan. PMID 19060904. Towards a proteome-scale map of the human protein-protein interaction network. Rual JF, et al. Nature, 2005 Oct 20. PMID 16189514. The status, quality, and expansion of the NIH full-length cDNA project: the Mammalian Gene Collection (MGC). Gerhard DS, et al. Genome

Res, 2004 Oct. PMID 15489334. An efficient protein complex purification method for functional proteomics in higher eukaryotes. Forler D, et al. Nat Biotechnol, 2003 Jan. PMID 12483225. Generation and initial analysis of more than 15,000 full-length human and mouse cDNA sequences. Strausberg RL, et al. Proc Natl Acad Sci U S A, 2002 Dec 24. PMID 12477932.