

**OXSRI Antibody (monoclonal) (M16)****Mouse monoclonal antibody raised against a full length recombinant OXSRI.****Catalog # AT3162a****Specification**

---

**OXSRI Antibody (monoclonal) (M16) - Product Information**

Application	WB, IHC, IF, E
Primary Accession	<a href="#">O95747</a>
Other Accession	<a href="#">BC008726.1</a>
Reactivity	Human, Mouse, Rat
Host	mouse
Clonality	Monoclonal
Isotype	IgG2a Kappa
Calculated MW	58022

**OXSRI Antibody (monoclonal) (M16) - Additional Information****Gene ID** 9943**Other Names**

Serine/threonine-protein kinase OSR1, Oxidative stress-responsive 1 protein, OXSRI (<a href="http://www.genenames.org/cgi-bin/gene\_symbol\_report?hgnc\_id=8508" target="\_blank">HGNC:8508</a>)

**Target/Specificity**

OXSRI (AAH08726.1, 1 a.a. ~ 527 a.a) full-length recombinant protein with GST tag. MW of the GST tag alone is 26 KDa.

**Dilution**

WB~~1:500~1000

IHC~~1:100~500

IF~~1:50~200

E~~N/A

**Format**

Clear, colorless solution in phosphate buffered saline, pH 7.2 .

**Storage**

Store at -20°C or lower. Aliquot to avoid repeated freezing and thawing.

**Precautions**

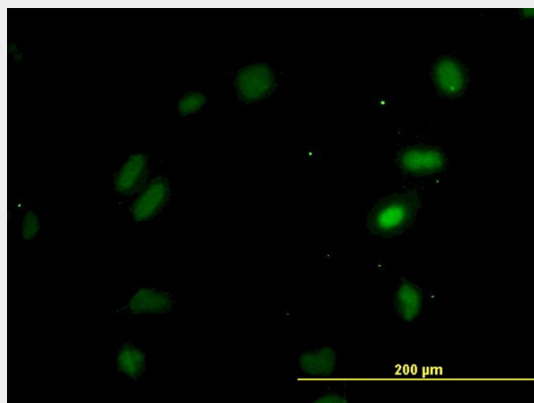
OXSRI Antibody (monoclonal) (M16) is for research use only and not for use in diagnostic or therapeutic procedures.

**OXSRI Antibody (monoclonal) (M16) - Protocols**

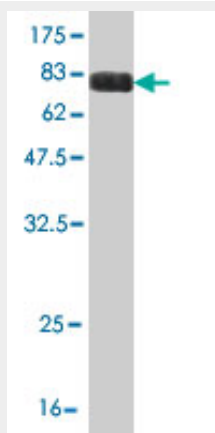
Provided below are standard protocols that you may find useful for product applications.

- [Western Blot](#)
- [Blocking Peptides](#)
- [Dot Blot](#)
- [Immunohistochemistry](#)
- [Immunofluorescence](#)
- [Immunoprecipitation](#)
- [Flow Cytometry](#)
- [Cell Culture](#)

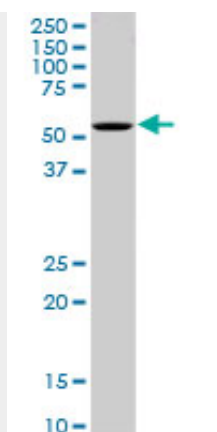
#### **OXSRI Antibody (monoclonal) (M16) - Images**



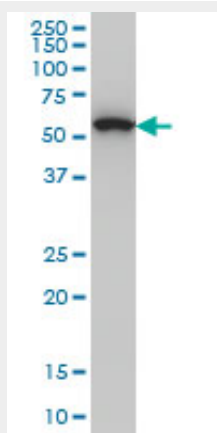
Immunofluorescence of monoclonal antibody to OXSRI on HeLa cell. [antibody concentration 30 ug/ml]



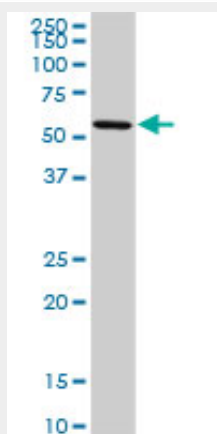
Antibody Reactive Against Recombinant Protein. Western Blot detection against Immunogen (83.71 KDa) .



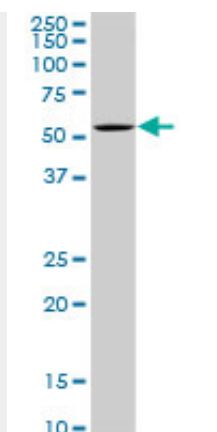
OXSR1 monoclonal antibody (M16), clone 3A8. Western Blot analysis of OXSR1 expression in PC-12 (Cat # AT3162a)



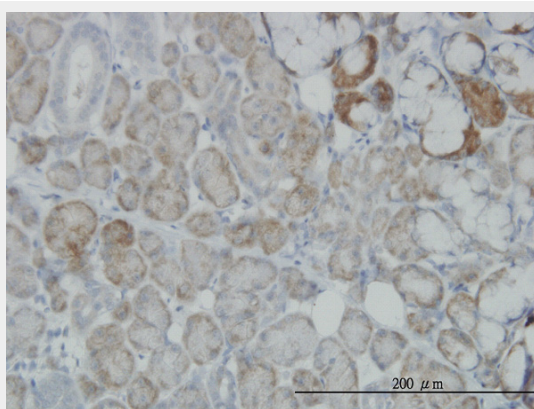
OXSR1 monoclonal antibody (M16), clone 3A8 Western Blot analysis of OXSR1 expression in HeLa S3 NE (Cat # AT3162a)



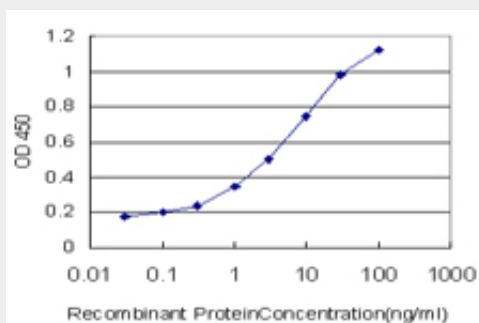
OXSR1 monoclonal antibody (M16), clone 3A8. Western Blot analysis of OXSR1 expression in Raw 264.7 (Cat # AT3162a)



OXSR1 monoclonal antibody (M16), clone 3A8. Western Blot analysis of OXSR1 expression in NIH/3T3 (Cat # AT3162a)



Immunoperoxidase of monoclonal antibody to OXSR1 on formalin-fixed paraffin-embedded human salivary gland. [antibody concentration 3 ug/ml]



Detection limit for recombinant GST tagged OXSR1 is approximately 0.03ng/ml as a capture antibody.

### OXSR1 Antibody (monoclonal) (M16) - Background

The product of this gene belongs to the Ser/Thr protein kinase family of proteins. It regulates downstream kinases in response to environmental stress, and may play a role in regulating the actin cytoskeleton.

### OXSR1 Antibody (monoclonal) (M16) - References

Crystal structure of domain-swapped STE20 OSR1 kinase domain. Lee SJ, et al. Protein Sci, 2009 Feb. PMID 19177573. Structure of the OSR1 kinase, a hypertension drug target. Villa F, et al. Proteins, 2008 Dec. PMID 18831043. Activation of the thiazide-sensitive Na<sup>+</sup>-Cl<sup>-</sup> cotransporter by

the WNK-regulated kinases SPAK and OSR1. Richardson C, et al. J Cell Sci, 2008 Mar 1. PMID 18270262. Toward a confocal subcellular atlas of the human proteome. Barbe L, et al. Mol Cell Proteomics, 2008 Mar. PMID 18029348. Structural insights into the recognition of substrates and activators by the OSR1 kinase. Villa F, et al. EMBO Rep, 2007 Sep. PMID 17721439.