

**PAPPA Antibody (monoclonal) (M01)****Mouse monoclonal antibody raised against a partial recombinant PAPPA.****Catalog # AT3178a****Specification**

---

**PAPPA Antibody (monoclonal) (M01) - Product Information**

Application	WB
Primary Accession	<a href="#">Q13219</a>
Other Accession	<a href="#">NM_002581</a>
Reactivity	Human
Host	mouse
Clonality	Monoclonal
Isotype	IgG2b Kappa
Calculated MW	180973

**PAPPA Antibody (monoclonal) (M01) - Additional Information****Gene ID** 5069**Other Names**

Pappalysin-1, Insulin-like growth factor-dependent IGF-binding protein 4 protease, IGF-dependent IGFBP-4 protease, IGFBP-4ase, Pregnancy-associated plasma protein A, PAPP-A, PAPPA

**Target/Specificity**

PAPPA (NP\_002572, 85 a.a. ~ 194 a.a) partial recombinant protein with GST tag. MW of the GST tag alone is 26 KDa.

**Dilution**

WB~~1:500~1000

**Format**

Clear, colorless solution in phosphate buffered saline, pH 7.2 .

**Storage**

Store at -20°C or lower. Aliquot to avoid repeated freezing and thawing.

**Precautions**

PAPPA Antibody (monoclonal) (M01) is for research use only and not for use in diagnostic or therapeutic procedures.

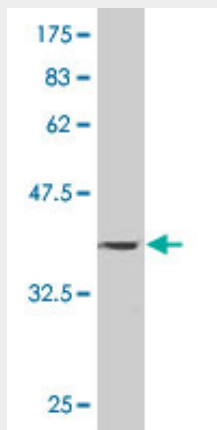
**PAPPA Antibody (monoclonal) (M01) - Protocols**

Provided below are standard protocols that you may find useful for product applications.

- [Western Blot](#)
- [Blocking Peptides](#)
- [Dot Blot](#)

- [Immunohistochemistry](#)
- [Immunofluorescence](#)
- [Immunoprecipitation](#)
- [Flow Cytometry](#)
- [Cell Culture](#)

#### **PAPPA Antibody (monoclonal) (M01) - Images**



Antibody Reactive Against Recombinant Protein. Western Blot detection against Immunogen (37.84 kDa) .

#### **PAPPA Antibody (monoclonal) (M01) - Background**

This gene encodes a secreted metalloproteinase which cleaves insulin-like growth factor binding proteins (IGFBPs). It is thought to be involved in local proliferative processes such as wound healing and bone remodeling. Low plasma level of this protein has been suggested as a biochemical marker for pregnancies with aneuploid fetuses.

#### **PAPPA Antibody (monoclonal) (M01) - References**

Follow-up association studies of chromosome region 9q and nonsyndromic cleft lip/palate. Letra A, et al. Am J Med Genet A, 2010 Jul. PMID 20583170. A pilot study of the clinical relevance of the relationship between the serum level of pregnancy-associated plasma protein A and the degree of acute coronary syndrome. You L, et al. J Int Med Res, 2010 Mar-Apr. PMID 20515576. Low PAPP-A in the first trimester is associated with reduced fetal growth rate prior to gestational week 20. Salvig JD, et al. Prenat Diagn, 2010 Jun. PMID 20509148. Transgenic overexpression of pregnancy-associated plasma protein-A in murine arterial smooth muscle accelerates atherosclerotic lesion development. Conover CA, et al. Am J Physiol Heart Circ Physiol, 2010 Aug. PMID 20472761. Personalized smoking cessation: interactions between nicotine dose, dependence and quit-success genotype score. Rose JE, et al. Mol Med, 2010 Jul-Aug. PMID 20379614.