

**PAX5 Antibody (monoclonal) (M01)****Mouse monoclonal antibody raised against a partial recombinant PAX5.****Catalog # AT3190a****Specification**

---

**PAX5 Antibody (monoclonal) (M01) - Product Information**

Application	WB, IHC, E
Primary Accession	<a href="#">Q02548</a>
Other Accession	<a href="#">NM_016734</a>
Reactivity	Human
Host	mouse
Clonality	Monoclonal
Isotype	IgG1 Kappa
Calculated MW	42149

**PAX5 Antibody (monoclonal) (M01) - Additional Information****Gene ID** 5079**Other Names**

Paired box protein Pax-5, B-cell-specific transcription factor, BSAP, PAX5

**Target/Specificity**

PAX5 (NP\_057953, 192 a.a. ~ 301 a.a) partial recombinant protein with GST tag. MW of the GST tag alone is 26 KDa.

**Dilution**

WB~~1:500~1000

IHC~~1:100~500

E~~N/A

**Format**

Clear, colorless solution in phosphate buffered saline, pH 7.2 .

**Storage**

Store at -20°C or lower. Aliquot to avoid repeated freezing and thawing.

**Precautions**

PAX5 Antibody (monoclonal) (M01) is for research use only and not for use in diagnostic or therapeutic procedures.

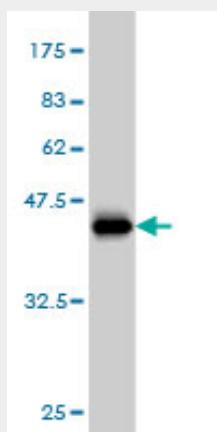
**PAX5 Antibody (monoclonal) (M01) - Protocols**

Provided below are standard protocols that you may find useful for product applications.

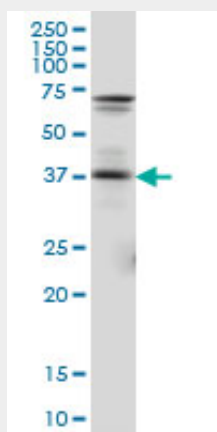
- [Western Blot](#)
- [Blocking Peptides](#)

- [Dot Blot](#)
- [Immunohistochemistry](#)
- [Immunofluorescence](#)
- [Immunoprecipitation](#)
- [Flow Cytometry](#)
- [Cell Culture](#)

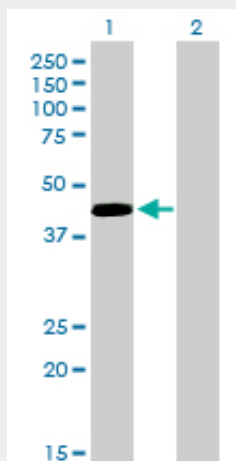
### PAX5 Antibody (monoclonal) (M01) - Images



Antibody Reactive Against Recombinant Protein. Western Blot detection against Immunogen (37.84 kDa) .

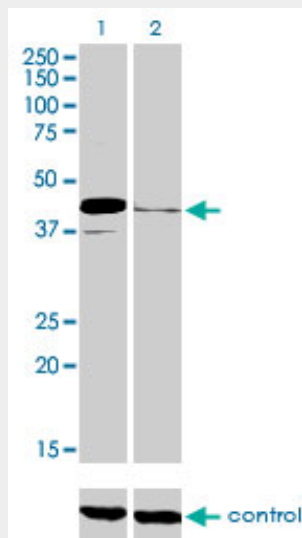


PAX5 monoclonal antibody (M01), clone 8F9. Western Blot analysis of PAX5 expression in IMR-32.

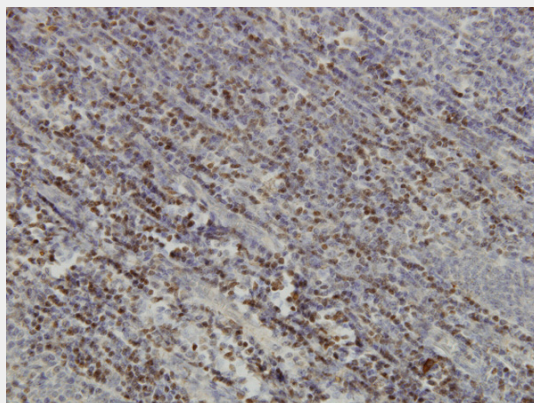


Western Blot analysis of PAX5 expression in transfected 293T cell line by PAX5 monoclonal antibody (M01), clone 8F9.

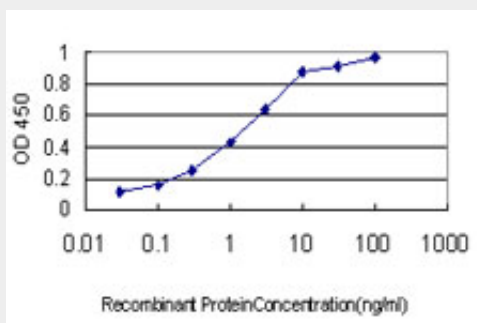
Lane 1: PAX5 transfected lysate(42.1 KDa).  
Lane 2: Non-transfected lysate.



Western blot analysis of PAX5 over-expressed 293 cell line, cotransfected with PAX5 Validated Chimera RNAi (Cat # AT3190a)



Immunoperoxidase of monoclonal antibody to PAX5 on formalin-fixed paraffin-embedded human tonsil. [antibody concentration 1.5 ug/ml]



Detection limit for recombinant GST tagged PAX5 is approximately 0.03ng/ml as a capture antibody.

#### PAX5 Antibody (monoclonal) (M01) - Background

This gene encodes a member of the paired box (PAX) family of transcription factors. The central feature of this gene family is a novel, highly conserved DNA-binding motif, known as the paired box. PAX proteins are important regulators in early development, and alterations in the expression of their genes are thought to contribute to neoplastic transformation. This gene encodes the B-cell lineage specific activator protein that is expressed at early, but not late stages of B-cell differentiation. Its expression has also been detected in developing CNS and testis and so the encoded protein may also play a role in neural development and spermatogenesis. This gene is located at 9p13, which is involved in t(9;14)(p13;q32) translocations recurring in small lymphocytic lymphomas of the plasmacytoid subtype, and in derived large-cell lymphomas. This translocation brings the potent E-mu enhancer of the IgH gene into close proximity of the PAX5 promoter, suggesting that the deregulation of transcription of this gene contributes to the pathogenesis of these lymphomas. Alternatively spliced transcript variants encoding different isoforms have been described but their biological validity has not been determined.

### **PAX5 Antibody (monoclonal) (M01) - References**

Genomic profiling of adult acute lymphoblastic leukemia by single nucleotide polymorphism oligonucleotide microarray and comparison to pediatric acute lymphoblastic leukemia. Okamoto R, et al. Haematologica, 2010 Sep. PMID 20435627. Personalized smoking cessation: interactions between nicotine dose, dependence and quit-success genotype score. Rose JE, et al. Mol Med, 2010 Jul-Aug. PMID 20379614. Mismatch repair and the downstream target genes, PAX5 and Ikaros, in childhood acute lymphoblastic leukemia. Best A, et al. Leuk Res, 2010 Aug. PMID 20233627. PAX5alpha enhances the epithelial behavior of human mammary carcinoma cells. Vidal LJ, et al. Mol Cancer Res, 2010 Mar. PMID 20197384. Wide diversity of PAX5 alterations in B-ALL: a Groupe Francophone de Cytogenetique Hematologique study. Coaud E, et al. Blood, 2010 Apr 15. PMID 20160164.

### **PAX5 Antibody (monoclonal) (M01) - Citations**

- [Expression of TRPM8 in human reactive lymphoid tissues and mature B-cell neoplasms.](#)