

PBX2 Antibody (monoclonal) (M01)**Mouse monoclonal antibody raised against a partial recombinant PBX2.****Catalog # AT3201a****Specification**

PBX2 Antibody (monoclonal) (M01) - Product Information

Application	WB, IF
Primary Accession	P40425
Other Accession	NM_002586
Reactivity	Human
Host	mouse
Clonality	Monoclonal
Isotype	IgG2a Kappa
Calculated MW	45881

PBX2 Antibody (monoclonal) (M01) - Additional Information**Gene ID** 5089**Other Names**

Pre-B-cell leukemia transcription factor 2, Homeobox protein PBX2, Protein G17, PBX2, G17

Target/Specificity

PBX2 (NP_002577, 354 a.a. ~ 430 a.a) partial recombinant protein with GST tag. MW of the GST tag alone is 26 KDa.

Dilution

WB~~1:500~1000

IF~~1:50~200

Format

Clear, colorless solution in phosphate buffered saline, pH 7.2 .

Storage

Store at -20°C or lower. Aliquot to avoid repeated freezing and thawing.

Precautions

PBX2 Antibody (monoclonal) (M01) is for research use only and not for use in diagnostic or therapeutic procedures.

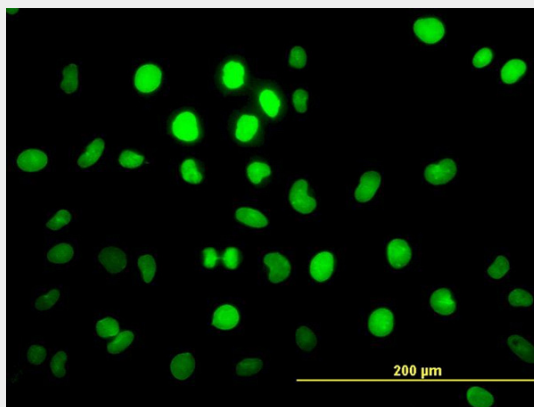
PBX2 Antibody (monoclonal) (M01) - Protocols

Provided below are standard protocols that you may find useful for product applications.

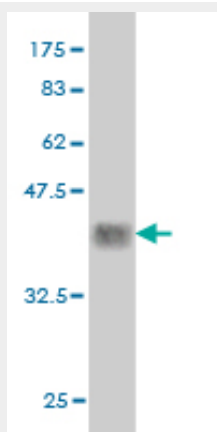
- [Western Blot](#)
- [Blocking Peptides](#)
- [Dot Blot](#)

- [Immunohistochemistry](#)
- [Immunofluorescence](#)
- [Immunoprecipitation](#)
- [Flow Cytometry](#)
- [Cell Culture](#)

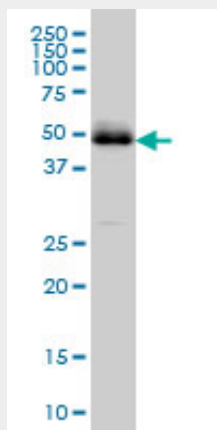
PBX2 Antibody (monoclonal) (M01) - Images



Immunofluorescence of monoclonal antibody to PBX2 on HeLa cell. [antibody concentration 10 ug/ml]

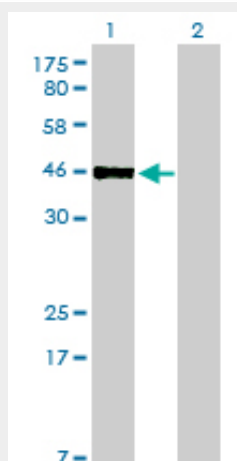


Antibody Reactive Against Recombinant Protein. Western Blot detection against Immunogen (34.21 KDa) .



PBX2 monoclonal antibody (M01), clone 2E9 Western Blot analysis of PBX2 expression in HeLa S3

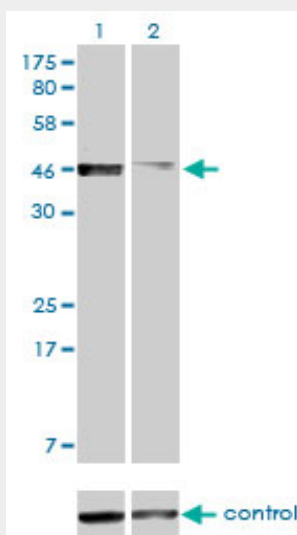
NE ((Cat # AT3201a)



Western Blot analysis of PBX2 expression in transfected 293T cell line by PBX2 monoclonal antibody (M01), clone 2E9.

Lane 1: PBX2 transfected lysate(45.9 KDa).

Lane 2: Non-transfected lysate.



Western blot analysis of PBX2 over-expressed 293 cell line, cotransfected with PBX2 Validated Chimera RNAi ((Cat # AT3201a)

PBX2 Antibody (monoclonal) (M01) - Background

This gene encodes a ubiquitously expressed member of the TALE/PBX homeobox family. It was identified by its similarity to a homeobox gene which is involved in t(1;19) translocation in acute pre-B-cell leukemias. This protein is a transcriptional activator which binds to the TLX1 promoter. The gene is located within the major histocompatibility complex (MHC) on chromosome 6.

PBX2 Antibody (monoclonal) (M01) - References

Variation at the NFATC2 Locus Increases the Risk of Thiazolinedinedione-Induced Edema in the Diabetes REduction Assessment with ramipril and rosiglitazone Medication (DREAM) Study. Bailey SD, et al. Diabetes Care, 2010 Jul 13. PMID 20628086. Examination of genetic polymorphisms in newborns for signatures of sex-specific prenatal selection. Ucisik-Akkaya E, et al. Mol Hum Reprod,

2010 Oct. PMID 20587610. Identification of type 2 diabetes-associated combination of SNPs using support vector machine. Ban HJ, et al. BMC Genet, 2010 Apr 23. PMID 20416077. Gene-centric association signals for lipids and apolipoproteins identified via the HumanCVD BeadChip. Talmud PJ, et al. Am J Hum Genet, 2009 Nov. PMID 19913121. High-density SNP screening of the major histocompatibility complex in systemic lupus erythematosus demonstrates strong evidence for independent susceptibility regions. Barcellos LF, et al. PLoS Genet, 2009 Oct. PMID 19851445.