

PCDH1 Antibody (monoclonal) (M01)

Mouse monoclonal antibody raised against a partial recombinant PCDH1.

Catalog # AT3210a

Specification

PCDH1 Antibody (monoclonal) (M01) - Product Information

| | |
|-------------------|---------------------------|
| Application | IF, WB, IHC, E |
| Primary Accession | Q08174 |
| Other Accession | NM_002587 |
| Reactivity | Human |
| Host | mouse |
| Clonality | Monoclonal |
| Isotype | IgG1 Kappa |
| Calculated MW | 114743 |

PCDH1 Antibody (monoclonal) (M01) - Additional Information

Gene ID 5097

Other Names

Protocadherin-1, Cadherin-like protein 1, Protocadherin-42, PC42, PCDH1

Target/Specificity

PCDH1 (NP_002578, 62 a.a. ~ 169 a.a) partial recombinant protein with GST tag. MW of the GST tag alone is 26 KDa.

Dilution

WB ~ ~ 1:500 ~ 1000

Format

Clear, colorless solution in phosphate buffered saline, pH 7.2 .

Storage

Store at -20°C or lower. Aliquot to avoid repeated freezing and thawing.

Precautions

PCDH1 Antibody (monoclonal) (M01) is for research use only and not for use in diagnostic or therapeutic procedures.

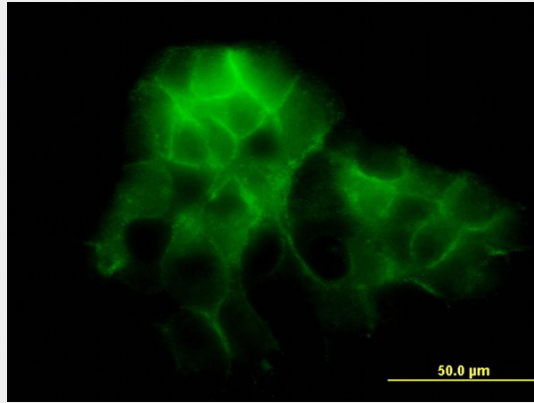
PCDH1 Antibody (monoclonal) (M01) - Protocols

Provided below are standard protocols that you may find useful for product applications.

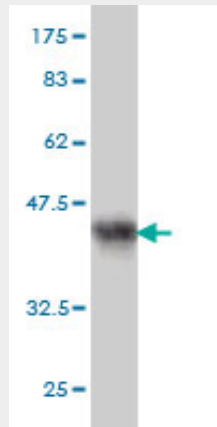
- [Western Blot](#)
- [Blocking Peptides](#)
- [Dot Blot](#)
- [Immunohistochemistry](#)

- [Immunofluorescence](#)
- [Immunoprecipitation](#)
- [Flow Cytometry](#)
- [Cell Culture](#)

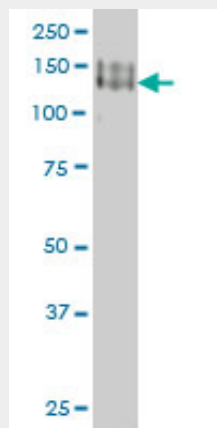
PCDH1 Antibody (monoclonal) (M01) - Images



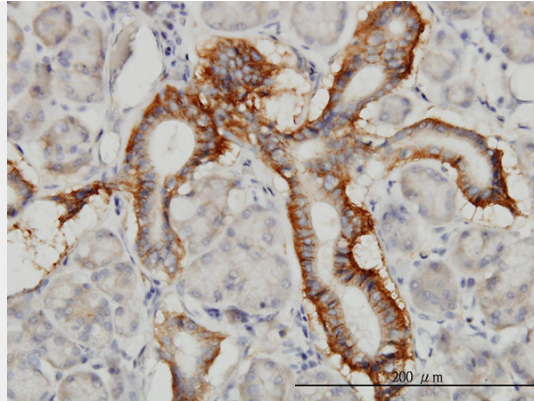
Immunofluorescence of monoclonal antibody to PCDH1 on A-431 cell. [antibody concentration 10 ug/ml]



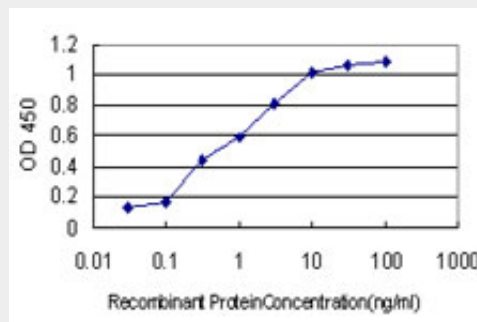
Antibody Reactive Against Recombinant Protein. Western Blot detection against Immunogen (37.62 KDa) .



PCDH1 monoclonal antibody (M01), clone 5D5 Western Blot analysis of PCDH1 expression in A-431 ((Cat # AT3210a)



Immunoperoxidase of monoclonal antibody to PCDH1 on formalin-fixed paraffin-embedded human salivary gland. [antibody concentration 3 ug/ml]



Detection limit for recombinant GST tagged PCDH1 is approximately 0.03ng/ml as a capture antibody.

PCDH1 Antibody (monoclonal) (M01) - Background

This gene belongs to the protocadherin subfamily within the cadherin superfamily. The encoded protein is a membrane protein found at cell-cell boundaries. It is involved in neural cell adhesion, suggesting a possible role in neuronal development. The protein includes an extracellular region, containing 7 cadherin-like domains, a transmembrane region and a C-terminal cytoplasmic region. Cells expressing the protein showed cell aggregation activity. Alternative splicing occurs in this gene.

PCDH1 Antibody (monoclonal) (M01) - References

1. Identification of PCDH1 as a Novel Susceptibility Gene for Bronchial Hyperresponsiveness. Koppelman GH, Meyers DA, Howard TD, Zheng SL, Hawkins GA, Ampleford EJ, Xu J, Koning H, Bruinenberg M, Nolte IM, van Diemen CC, Boezen HM, Timens W, Whittaker PA, Stine OC, Barton SJ, Holloway JW, Holgate ST, Graves PE, Martinez FD, van Oosterhout A, BleeAm J Respir Crit Care Med. 2009 Sep 3. [Epub ahead of print]