

**PCDH20 Antibody (monoclonal) (M01)****Mouse monoclonal antibody raised against a partial recombinant PCDH20.****Catalog # AT3214a****Specification**

---

**PCDH20 Antibody (monoclonal) (M01) - Product Information**

Application	WB, E
Primary Accession	<a href="#">Q8N6Y1</a>
Other Accession	<a href="#">NM_022843</a>
Reactivity	Human
Host	mouse
Clonality	Monoclonal
Isotype	IgG2a Kappa
Calculated MW	104919

**PCDH20 Antibody (monoclonal) (M01) - Additional Information****Gene ID** 64881**Other Names**

Protocadherin-20, Protocadherin-13, PCDH20, PCDH13

**Target/Specificity**

PCDH20 (NP\_073754, 395 a.a. ~ 494 a.a) partial recombinant protein with GST tag. MW of the GST tag alone is 26 KDa.

**Dilution**

WB~~1:500~1000

E~~N/A

**Format**

Clear, colorless solution in phosphate buffered saline, pH 7.2 .

**Storage**

Store at -20°C or lower. Aliquot to avoid repeated freezing and thawing.

**Precautions**

PCDH20 Antibody (monoclonal) (M01) is for research use only and not for use in diagnostic or therapeutic procedures.

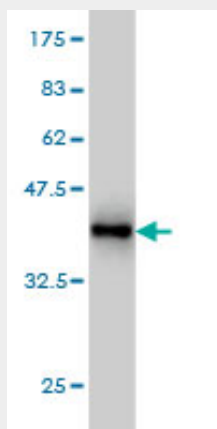
**PCDH20 Antibody (monoclonal) (M01) - Protocols**

Provided below are standard protocols that you may find useful for product applications.

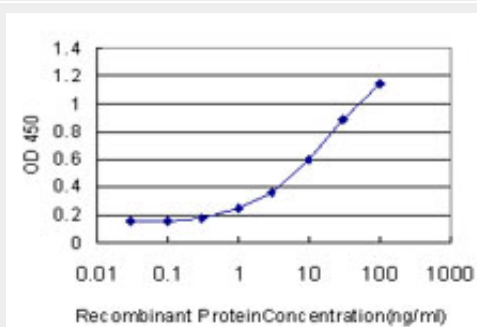
- [Western Blot](#)
- [Blocking Peptides](#)
- [Dot Blot](#)

- [Immunohistochemistry](#)
- [Immunofluorescence](#)
- [Immunoprecipitation](#)
- [Flow Cytometry](#)
- [Cell Culture](#)

### PCDH20 Antibody (monoclonal) (M01) - Images



Antibody Reactive Against Recombinant Protein. Western Blot detection against Immunogen (36.74 kDa) .



Detection limit for recombinant GST tagged PCDH20 is approximately 1ng/ml as a capture antibody.

### PCDH20 Antibody (monoclonal) (M01) - Background

This gene belongs to the protocadherin gene family, a subfamily of the cadherin superfamily. This gene encodes a protein which contains 6 extracellular cadherin domains, a transmembrane domain and a cytoplasmic tail differing from those of the classical cadherins. Although its specific function is undetermined, the cadherin-related neuronal receptor is thought to play a role in the establishment and function of specific cell-cell connections in the brain.

### PCDH20 Antibody (monoclonal) (M01) - References

The status, quality, and expansion of the NIH full-length cDNA project: the Mammalian Gene Collection (MGC). Gerhard DS, et al. Genome Res, 2004 Oct. PMID 15489334. Complete sequencing and characterization of 21,243 full-length human cDNAs. Ota T, et al. Nat Genet, 2004 Jan. PMID 14702039. Generation and initial analysis of more than 15,000 full-length human and mouse cDNA sequences. Strausberg RL, et al. Proc Natl Acad Sci U S A, 2002 Dec 24. PMID 12477932. Recent progress in protocadherin research. Suzuki ST. Exp Cell Res, 2000 Nov 25. PMID 11082270. Phylogenetic analysis of the cadherin superfamily allows identification of six major subfamilies besides several solitary members. Noll F, et al. J Mol Biol, 2000 Jun 9. PMID 10835267.