

**PCDHA12 Antibody (monoclonal) (M02)****Mouse monoclonal antibody raised against a partial recombinant PCDHA12.****Catalog # AT3218a****Specification**

---

**PCDHA12 Antibody (monoclonal) (M02) - Product Information**

Application	E
Primary Accession	<a href="#">O9UN75</a>
Other Accession	<a href="#">NM_018903</a>
Reactivity	Human
Host	mouse
Clonality	Monoclonal
Isotype	IgG2b Kappa
Calculated MW	101652

**PCDHA12 Antibody (monoclonal) (M02) - Additional Information****Gene ID** 56137**Other Names**

Protocadherin alpha-12, PCDH-alpha-12, PCDHA12

**Target/Specificity**

PCDHA12 (NP\_061726, 222 a.a. ~ 327 a.a) partial recombinant protein with GST tag. MW of the GST tag alone is 26 KDa.

**Dilution**

E~~N/A

**Format**

Clear, colorless solution in phosphate buffered saline, pH 7.2 .

**Storage**

Store at -20°C or lower. Aliquot to avoid repeated freezing and thawing.

**Precautions**

PCDHA12 Antibody (monoclonal) (M02) is for research use only and not for use in diagnostic or therapeutic procedures.

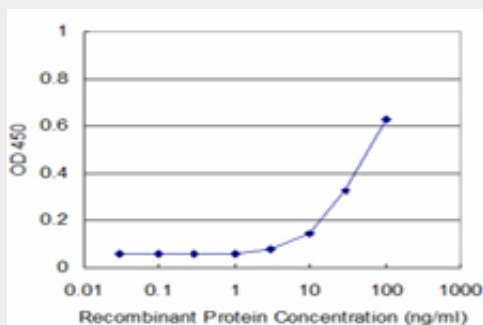
**PCDHA12 Antibody (monoclonal) (M02) - Protocols**

Provided below are standard protocols that you may find useful for product applications.

- [Western Blot](#)
- [Blocking Peptides](#)
- [Dot Blot](#)
- [Immunohistochemistry](#)

- [Immunofluorescence](#)
- [Immunoprecipitation](#)
- [Flow Cytometry](#)
- [Cell Culture](#)

### PCDHA12 Antibody (monoclonal) (M02) - Images



Detection limit for recombinant GST tagged PCDHA12 is approximately 3ng/ml as a capture antibody.

### PCDHA12 Antibody (monoclonal) (M02) - Background

This gene is a member of the protocadherin alpha gene cluster, one of three related gene clusters tandemly linked on chromosome five that demonstrate an unusual genomic organization similar to that of B-cell and T-cell receptor gene clusters. The alpha gene cluster is composed of 15 cadherin superfamily genes related to the mouse CNR genes and consists of 13 highly similar and 2 more distantly related coding sequences. The tandem array of 15 N-terminal exons, or variable exons, are followed by downstream C-terminal exons, or constant exons, which are shared by all genes in the cluster. The large, uninterrupted N-terminal exons each encode six cadherin ectodomains while the C-terminal exons encode the cytoplasmic domain. These neural cadherin-like cell adhesion proteins are integral plasma membrane proteins that most likely play a critical role in the establishment and function of specific cell-cell connections in the brain. Alternative splicing has been observed and additional variants have been suggested but their full-length nature has yet to be determined.

### PCDHA12 Antibody (monoclonal) (M02) - References

Systematic identification of SH3 domain-mediated human protein-protein interactions by peptide array target screening. Wu C, et al. Proteomics, 2007 Jun. PMID 17474147. Signal sequence and keyword trap in silico for selection of full-length human cDNAs encoding secretion or membrane proteins from oligo-capped cDNA libraries. Otsuki T, et al. DNA Res, 2005. PMID 16303743. The DNA sequence and comparative analysis of human chromosome 5. Schmutz J, et al. Nature, 2004 Sep 16. PMID 15372022. Generation and initial analysis of more than 15,000 full-length human and mouse cDNA sequences. Strausberg RL, et al. Proc Natl Acad Sci U S A, 2002 Dec 24. PMID 12477932. Comparative DNA sequence analysis of mouse and human protocadherin gene clusters. Wu Q, et al. Genome Res, 2001 Mar. PMID 11230163.