

**PCDHB10 Antibody (monoclonal) (M07)****Mouse monoclonal antibody raised against a partial recombinant PCDHB10.****Catalog # AT3222a****Specification**

---

**PCDHB10 Antibody (monoclonal) (M07) - Product Information**

Application	WB, IF
Primary Accession	<a href="#">O9UN67</a>
Other Accession	<a href="#">NM_018930</a>
Reactivity	Human, Mouse
Host	mouse
Clonality	Monoclonal
Isotype	IgG2a Kappa
Calculated MW	87621

**PCDHB10 Antibody (monoclonal) (M07) - Additional Information****Gene ID** 56126**Other Names**

Protocadherin beta-10, PCDH-beta-10, PCDHB10

**Target/Specificity**

PCDHB10 (NP\_061753, 27 a.a. ~ 125 a.a) partial recombinant protein with GST tag. MW of the GST tag alone is 26 KDa.

**Dilution**

WB~~1:500~1000

IF~~1:50~200

**Format**

Clear, colorless solution in phosphate buffered saline, pH 7.2 .

**Storage**

Store at -20°C or lower. Aliquot to avoid repeated freezing and thawing.

**Precautions**

PCDHB10 Antibody (monoclonal) (M07) is for research use only and not for use in diagnostic or therapeutic procedures.

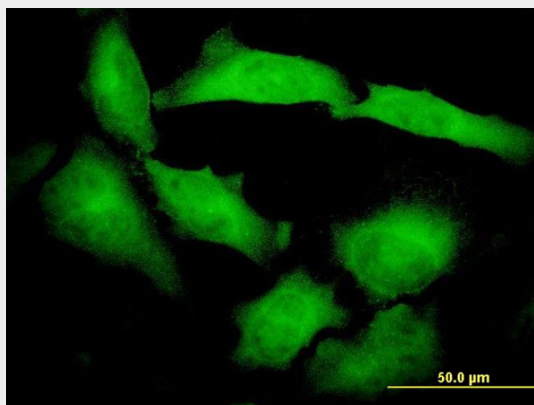
**PCDHB10 Antibody (monoclonal) (M07) - Protocols**

Provided below are standard protocols that you may find useful for product applications.

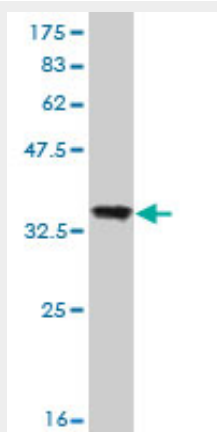
- [Western Blot](#)
- [Blocking Peptides](#)
- [Dot Blot](#)

- [Immunohistochemistry](#)
- [Immunofluorescence](#)
- [Immunoprecipitation](#)
- [Flow Cytometry](#)
- [Cell Culture](#)

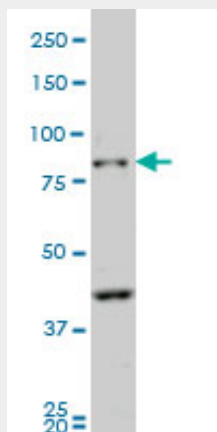
### PCDHB10 Antibody (monoclonal) (M07) - Images



Immunofluorescence of monoclonal antibody to PCDHB10 on HeLa cell. [antibody concentration 10 ug/ml]



Antibody Reactive Against Recombinant Protein. Western Blot detection against Immunogen (36.63 KDa) .



PCDHB10 monoclonal antibody (M07), clone 4C4 Western Blot analysis of PCDHB10 expression in

NIH/3T3 ( (Cat # AT3222a )

**PCDHB10 Antibody (monoclonal) (M07) - Background**

This gene is a member of the protocadherin beta gene cluster, one of three related gene clusters tandemly linked on chromosome five. The gene clusters demonstrate an unusual genomic organization similar to that of B-cell and T-cell receptor gene clusters. The beta cluster contains 16 genes and 3 pseudogenes, each encoding 6 extracellular cadherin domains and a cytoplasmic tail that deviates from others in the cadherin superfamily. The extracellular domains interact in a homophilic manner to specify differential cell-cell connections. Unlike the alpha and gamma clusters, the transcripts from these genes are made up of only one large exon, not sharing common 3' exons as expected. These neural cadherin-like cell adhesion proteins are integral plasma membrane proteins. Their specific functions are unknown but they most likely play a critical role in the establishment and function of specific cell-cell neural connections.

**PCDHB10 Antibody (monoclonal) (M07) - References**

1. Gene expression profiling-based identification of cell-surface targets for developing multimeric ligands in pancreatic cancer. Balagurunathan Y, Morse DL, Hostetter G, Shanmugam V, Stafford P, Shack S, Pearson J, Trissal M, Demeure MJ, Von Hoff DD, Hruby VJ, Gillies RJ, Han H. Mol Cancer Ther. 2008 Sep;7(9):3071-80. Epub 2008 Sep 2.