

PCDHGA8 Antibody (monoclonal) (M01)**Mouse monoclonal antibody raised against a partial recombinant PCDHGA8.****Catalog # AT3229a****Specification**

PCDHGA8 Antibody (monoclonal) (M01) - Product Information

Application	WB, E
Primary Accession	O9Y5G5
Other Accession	NM_032088
Reactivity	Human
Host	mouse
Clonality	Monoclonal
Isotype	IgG2a Kappa
Calculated MW	101480

PCDHGA8 Antibody (monoclonal) (M01) - Additional Information**Gene ID** 9708**Other Names**

Protocadherin gamma-A8, PCDH-gamma-A8, PCDHGA8, KIAA0327

Target/Specificity

PCDHGA8 (NP_114477, 357 a.a. ~ 444 a.a) partial recombinant protein with GST tag. MW of the GST tag alone is 26 KDa.

Dilution

WB~~1:500~1000

E~~N/A

Format

Clear, colorless solution in phosphate buffered saline, pH 7.2 .

Storage

Store at -20°C or lower. Aliquot to avoid repeated freezing and thawing.

Precautions

PCDHGA8 Antibody (monoclonal) (M01) is for research use only and not for use in diagnostic or therapeutic procedures.

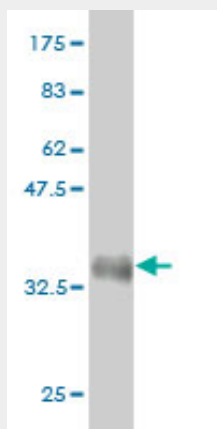
PCDHGA8 Antibody (monoclonal) (M01) - Protocols

Provided below are standard protocols that you may find useful for product applications.

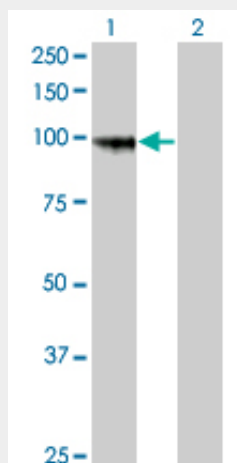
- [Western Blot](#)
- [Blocking Peptides](#)
- [Dot Blot](#)

- [Immunohistochemistry](#)
- [Immunofluorescence](#)
- [Immunoprecipitation](#)
- [Flow Cytometry](#)
- [Cell Culture](#)

PCDHGA8 Antibody (monoclonal) (M01) - Images



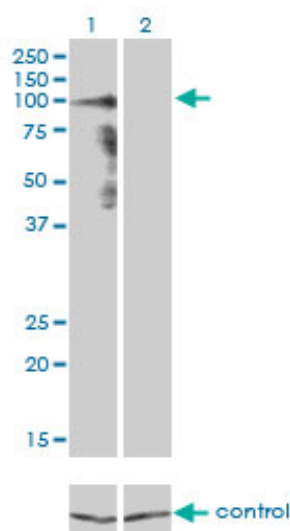
Antibody Reactive Against Recombinant Protein. Western Blot detection against Immunogen (35.42 KDa) .



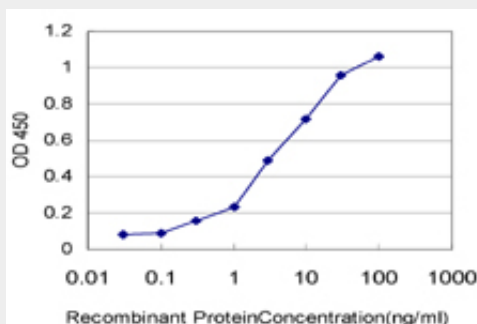
Western Blot analysis of PCDHGA8 expression in transfected 293T cell line by PCDHGA8 monoclonal antibody (M01), clone 1C11.

Lane 1: PCDHGA8 transfected lysate(101.48 KDa).

Lane 2: Non-transfected lysate.



Western blot analysis of PCDHGA8 over-expressed 293 cell line, cotransfected with PCDHGA8 Validated Chimera RNAi (Cat # AT3229a)



Detection limit for recombinant GST tagged PCDHGA8 is approximately 0.3ng/ml as a capture antibody.

PCDHGA8 Antibody (monoclonal) (M01) - Background

This gene is a member of the protocadherin gamma gene cluster, one of three related clusters tandemly linked on chromosome five. These gene clusters have an immunoglobulin-like organization, suggesting that a novel mechanism may be involved in their regulation and expression. The gamma gene cluster includes 22 genes divided into 3 subfamilies. Subfamily A contains 12 genes, subfamily B contains 7 genes and 2 pseudogenes, and the more distantly related subfamily C contains 3 genes. The tandem array of 22 large, variable region exons are followed by a constant region, containing 3 exons shared by all genes in the cluster. Each variable region exon encodes the extracellular region, which includes 6 cadherin ectodomains and a transmembrane region. The constant region exons encode the common cytoplasmic region. These neural cadherin-like cell adhesion proteins most likely play a critical role in the establishment and function of specific cell-cell connections in the brain. Alternative splicing has been described for the gamma cluster genes.

PCDHGA8 Antibody (monoclonal) (M01) - References

Comparative DNA sequence analysis of mouse and human protocadherin gene clusters. Wu Q, et al. Genome Res, 2001 Mar. PMID 11230163. Phylogenetic analysis of the cadherin superfamily allows identification of six major subfamilies besides several solitary members. Nollet F, et al. J Mol Biol, 2000 Jun 9. PMID 10835267. Cadherin superfamily genes: functions, genomic organization, and neurologic diversity. Yagi T, et al. Genes Dev, 2000 May 15. PMID 10817752. Large exons encoding multiple ectodomains are a characteristic feature of protocadherin genes. Wu Q, et al. Proc Natl

Acad Sci U S A, 2000 Mar 28. PMID 10716726. A striking organization of a large family of human neural cadherin-like cell adhesion genes. Wu Q, et al. Cell, 1999 Jun 11. PMID 10380929.