

**PCDHGC3 Antibody (monoclonal) (M02)****Mouse monoclonal antibody raised against a partial recombinant PCDHGC3.****Catalog # AT3230a****Specification**

---

**PCDHGC3 Antibody (monoclonal) (M02) - Product Information**

Application	WB, E
Primary Accession	<a href="#">O9UN70</a>
Other Accession	<a href="#">NM_002588</a>
Reactivity	Human
Host	mouse
Clonality	Monoclonal
Isotype	IgG2a Kappa
Calculated MW	101077

**PCDHGC3 Antibody (monoclonal) (M02) - Additional Information****Gene ID** 5098**Other Names**

Protocadherin gamma-C3, PCDH-gamma-C3, Protocadherin-2, Protocadherin-43, PC-43, PCDHGC3, PCDH2

**Target/Specificity**

PCDHGC3 (NP\_002579, 71 a.a. ~ 178 a.a) partial recombinant protein with GST tag. MW of the GST tag alone is 26 KDa.

**Dilution**

WB~~1:500~1000

E~~N/A

**Format**

Clear, colorless solution in phosphate buffered saline, pH 7.2 .

**Storage**

Store at -20°C or lower. Aliquot to avoid repeated freezing and thawing.

**Precautions**

PCDHGC3 Antibody (monoclonal) (M02) is for research use only and not for use in diagnostic or therapeutic procedures.

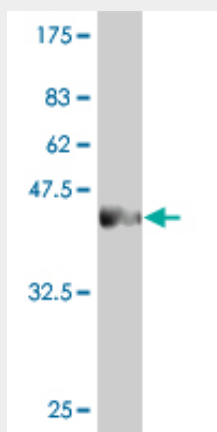
**PCDHGC3 Antibody (monoclonal) (M02) - Protocols**

Provided below are standard protocols that you may find useful for product applications.

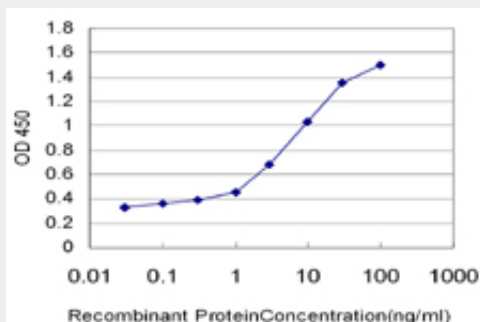
- [Western Blot](#)
- [Blocking Peptides](#)

- [Dot Blot](#)
- [Immunohistochemistry](#)
- [Immunofluorescence](#)
- [Immunoprecipitation](#)
- [Flow Cytometry](#)
- [Cell Culture](#)

### PCDHGC3 Antibody (monoclonal) (M02) - Images



Antibody Reactive Against Recombinant Protein. Western Blot detection against Immunogen (37.62 KDa) .



Detection limit for recombinant GST tagged PCDHGC3 is approximately 0.1 ng/ml as a capture antibody.

### PCDHGC3 Antibody (monoclonal) (M02) - Background

This gene is a member of the protocadherin gamma gene cluster, one of three related clusters tandemly linked on chromosome five. These gene clusters have an immunoglobulin-like organization, suggesting that a novel mechanism may be involved in their regulation and expression. The gamma gene cluster includes 22 genes divided into 3 subfamilies. Subfamily A contains 12 genes, subfamily B contains 7 genes and 2 pseudogenes, and the more distantly related subfamily C contains 3 genes. The tandem array of 22 large, variable region exons are followed by a constant region, containing 3 exons shared by all genes in the cluster. Each variable region exon encodes the extracellular region, which includes 6 cadherin ectodomains and a transmembrane region. The constant region exons encode the common cytoplasmic region. These neural cadherin-like cell adhesion proteins most likely play a critical role in the establishment and function of specific cell-cell connections in the brain. Alternative splicing has been described for the gamma cluster genes.

### PCDHGC3 Antibody (monoclonal) (M02) - References

Toward a confocal subcellular atlas of the human proteome. Barbe L, et al. Mol Cell Proteomics, 2008 Mar. PMID 18029348. Regulated ADAM10-dependent ectodomain shedding of gamma-protocadherin C3 modulates cell-cell adhesion. Reiss K, et al. J Biol Chem, 2006 Aug 4. PMID 16751190. The status, quality, and expansion of the NIH full-length cDNA project: the Mammalian Gene Collection (MGC). Gerhard DS, et al. Genome Res, 2004 Oct. PMID 15489334. Generation and initial analysis of more than 15,000 full-length human and mouse cDNA sequences. Strausberg RL, et al. Proc Natl Acad Sci U S A, 2002 Dec 24. PMID 12477932. Comparative DNA sequence analysis of mouse and human protocadherin gene clusters. Wu Q, et al. Genome Res, 2001 Mar. PMID 11230163.