

PCK1 Antibody (monoclonal) (M01)**Mouse monoclonal antibody raised against a full length recombinant PCK1.****Catalog # AT3233a****Specification**

PCK1 Antibody (monoclonal) (M01) - Product Information

Application	IF, IP, WB
Primary Accession	P35558
Other Accession	BC023978
Reactivity	Human
Host	mouse
Clonality	Monoclonal
Isotype	IgG1 Kappa
Calculated MW	69195

PCK1 Antibody (monoclonal) (M01) - Additional Information**Gene ID** 5105**Other Names**

Phosphoenolpyruvate carboxykinase, cytosolic [GTP], PEPCK-C, PCK1, PEPCK1

Target/Specificity

PCK1 (AAH23978, 1 a.a. ~ 622 a.a) full-length recombinant protein with GST tag. MW of the GST tag alone is 26 KDa.

Dilution

WB~~1:500~1000

Format

Clear, colorless solution in phosphate buffered saline, pH 7.2 .

Storage

Store at -20°C or lower. Aliquot to avoid repeated freezing and thawing.

Precautions

PCK1 Antibody (monoclonal) (M01) is for research use only and not for use in diagnostic or therapeutic procedures.

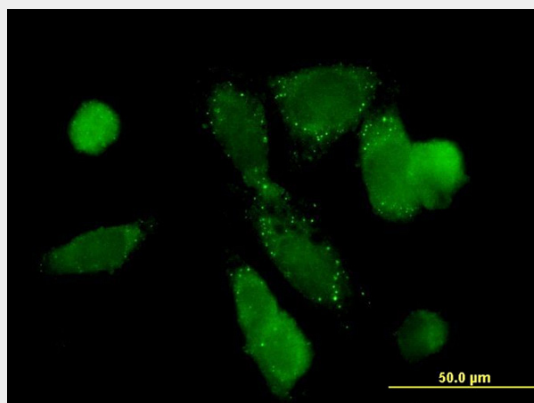
PCK1 Antibody (monoclonal) (M01) - Protocols

Provided below are standard protocols that you may find useful for product applications.

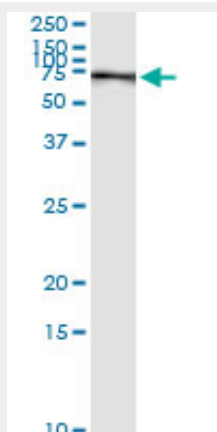
- [Western Blot](#)
- [Blocking Peptides](#)
- [Dot Blot](#)
- [Immunohistochemistry](#)

- [Immunofluorescence](#)
- [Immunoprecipitation](#)
- [Flow Cytometry](#)
- [Cell Culture](#)

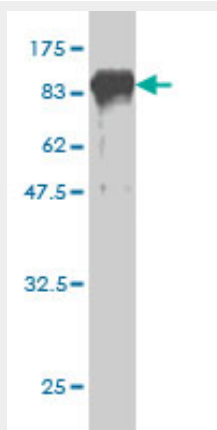
PCK1 Antibody (monoclonal) (M01) - Images



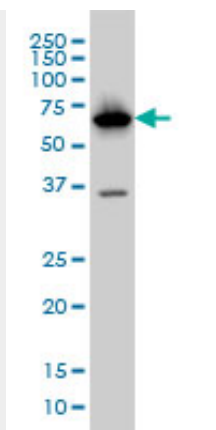
Immunofluorescence of monoclonal antibody to PCK1 on HepG2 cell. [antibody concentration 10 ug/ml]



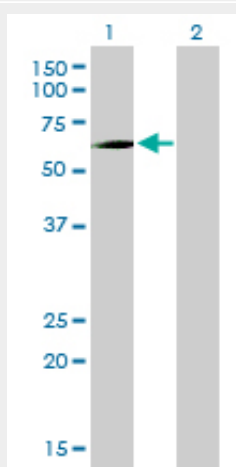
Immunoprecipitation of PCK1 transfected lysate using anti-PCK1 monoclonal antibody and Protein A Magnetic Bead ([U0007](#)), and immunoblotted with PCK1 MaxPab rabbit polyclonal antibody.



Antibody Reactive Against Recombinant Protein. Western Blot detection against Immunogen (94.16 KDa) .



PCK1 monoclonal antibody (M01), clone 3E4 Western Blot analysis of PCK1 expression in HepG2 (Cat # AT3233a)



Western Blot analysis of PCK1 expression in transfected 293T cell line by PCK1 monoclonal antibody (M01), clone 3E4.

Lane 1: PCK1 transfected lysate(69.2 KDa).

Lane 2: Non-transfected lysate.

PCK1 Antibody (monoclonal) (M01) - Background

This gene is a main control point for the regulation of gluconeogenesis. The cytosolic enzyme encoded by this gene, along with GTP, catalyzes the formation of phosphoenolpyruvate from oxaloacetate, with the release of carbon dioxide and GDP. The expression of this gene can be regulated by insulin, glucocorticoids, glucagon, cAMP, and diet. Defects in this gene are a cause of cytosolic phosphoenolpyruvate carboxykinase deficiency. A mitochondrial isozyme of the encoded protein also has been characterized.

PCK1 Antibody (monoclonal) (M01) - References

COMMON VARIANTS IN 40 GENES ASSESSED FOR DIABETES INCIDENCE AND RESPONSE TO METFORMIN AND LIFESTYLE INTERVENTIONS IN THE DIABETES PREVENTION PROGRAM. Jablonski KA, et al. Diabetes, 2010 Aug 3. PMID 20682687. Variation at the NFATC2 Locus Increases the Risk of Thiazolidinedione-Induced Edema in the Diabetes REduction Assessment with ramipril and rosiglitazone Medication (DREAM) Study. Bailey SD, et al. Diabetes Care, 2010 Jul 13. PMID 20628086. Physiogenomic analysis of statin-treated patients: domain-specific counter effects within the ACACB gene on low-density lipoprotein cholesterol? Ruafo G, et al. Pharmacogenomics, 2010

Jul. PMID 20602615. Intermediate phenotypes identify divergent pathways to Alzheimer's disease. Shulman JM, et al. PLoS One, 2010 Jun 21. PMID 20574532. Gene-centric association signals for lipids and apolipoproteins identified via the HumanCVD BeadChip. Talmud PJ, et al. Am J Hum Genet, 2009 Nov. PMID 19913121.