

## PCSK6 Antibody (monoclonal) (M01)

Mouse monoclonal antibody raised against a partial recombinant PCSK6.

Catalog # AT3240a

### Specification

---

#### PCSK6 Antibody (monoclonal) (M01) - Product Information

Application	WB, E
Primary Accession	<a href="#">P29122</a>
Other Accession	<a href="#">NM_002570</a>
Reactivity	Human
Host	mouse
Clonality	Monoclonal
Isotype	IgG2a Kappa
Calculated MW	106420

#### PCSK6 Antibody (monoclonal) (M01) - Additional Information

Gene ID 5046

##### Other Names

Proprotein convertase subtilisin/kexin type 6, 3421-, Paired basic amino acid cleaving enzyme 4, Subtilisin-like proprotein convertase 4, SPC4, Subtilisin/kexin-like protease PACE4, PCSK6, PACE4

##### Target/Specificity

PCSK6 (NP\_002561, 860 a.a. ~ 969 a.a) partial recombinant protein with GST tag. MW of the GST tag alone is 26 KDa.

##### Dilution

WB~~1:500~1000

E~~N/A

##### Format

Clear, colorless solution in phosphate buffered saline, pH 7.2 .

##### Storage

Store at -20°C or lower. Aliquot to avoid repeated freezing and thawing.

##### Precautions

PCSK6 Antibody (monoclonal) (M01) is for research use only and not for use in diagnostic or therapeutic procedures.

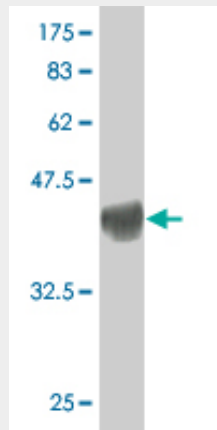
#### PCSK6 Antibody (monoclonal) (M01) - Protocols

Provided below are standard protocols that you may find useful for product applications.

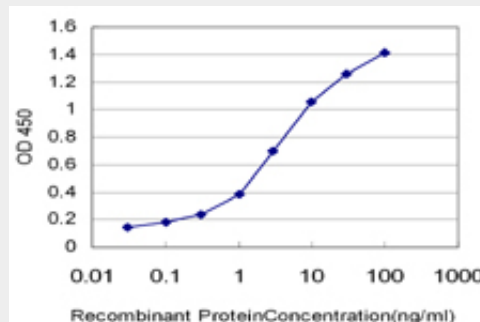
- [Western Blot](#)
- [Blocking Peptides](#)

- [Dot Blot](#)
- [Immunohistochemistry](#)
- [Immunofluorescence](#)
- [Immunoprecipitation](#)
- [Flow Cytometry](#)
- [Cell Culture](#)

### PCSK6 Antibody (monoclonal) (M01) - Images



Antibody Reactive Against Recombinant Protein. Western Blot detection against Immunogen (37.84 kDa).



Detection limit for recombinant GST tagged PCSK6 is approximately 0.1 ng/ml as a capture antibody.

### PCSK6 Antibody (monoclonal) (M01) - Background

The protein encoded by this gene belongs to the subtilisin-like proprotein convertase family. The members of this family are proprotein convertases that process latent precursor proteins into their biologically active products. This encoded protein is a calcium-dependent serine endoprotease that can cleave precursor protein at their paired basic amino acid processing sites. Some of its substrates are - transforming growth factor beta related proteins, proalbumin, and von Willebrand factor. This gene is thought to play a role in tumor progression. Alternatively spliced transcript variants encoding different isoforms have been identified.

### PCSK6 Antibody (monoclonal) (M01) - References

Variation at the NFATC2 Locus Increases the Risk of Thiazolidinedione-Induced Edema in the Diabetes Reduction Assessment with ramipril and rosiglitazone Medication (DREAM) Study. Bailey SD, et al. Diabetes Care, 2010 Jul 13. PMID 20628086. Personalized smoking cessation: interactions between nicotine dose, dependence and quit-success genotype score. Rose JE, et al. Mol Med, 2010 Jul-Aug. PMID 20379614. Gene-centric association signals for lipids and apolipoproteins identified via

the HumanCVD BeadChip. Talmud PJ, et al. Am J Hum Genet, 2009 Nov. PMID 19913121. Subtilisin-like proprotein convertase expression, localization, and activity in the human retina and optic nerve head. Fuller JA, et al. Invest Ophthalmol Vis Sci, 2009 Dec. PMID 19339735. Cripto recruits Furin and PACE4 and controls Nodal trafficking during proteolytic maturation. Blanchet MH, et al. EMBO J, 2008 Oct 8. PMID 18772886.