

**PDE1B Antibody (monoclonal) (M01)****Mouse monoclonal antibody raised against a partial recombinant PDE1B.****Catalog # AT3251a****Specification**

---

**PDE1B Antibody (monoclonal) (M01) - Product Information**

Application	WB, E
Primary Accession	<a href="#">Q01064</a>
Other Accession	<a href="#">BC032226</a>
Reactivity	Human
Host	mouse
Clonality	Monoclonal
Isotype	IgG2a Kappa
Calculated MW	61380

**PDE1B Antibody (monoclonal) (M01) - Additional Information****Gene ID** 5153**Other Names**Calcium/calmodulin-dependent 3', 5'-cyclic nucleotide phosphodiesterase 1B, Cam-PDE 1B, 63 kDa  
Cam-PDE, PDE1B, PDE1B1, PDES1B**Target/Specificity**

PDE1B (AAH32226, 437 a.a. ~ 536 a.a) partial recombinant protein with GST tag. MW of the GST tag alone is 26 KDa.

**Dilution**

WB~~1:500~1000

E~~N/A

**Format**

Clear, colorless solution in phosphate buffered saline, pH 7.2 .

**Storage**

Store at -20°C or lower. Aliquot to avoid repeated freezing and thawing.

**Precautions**

PDE1B Antibody (monoclonal) (M01) is for research use only and not for use in diagnostic or therapeutic procedures.

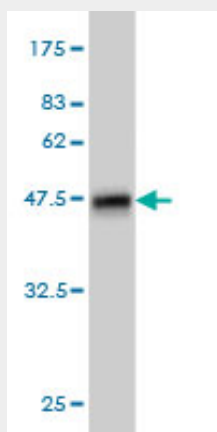
**PDE1B Antibody (monoclonal) (M01) - Protocols**

Provided below are standard protocols that you may find useful for product applications.

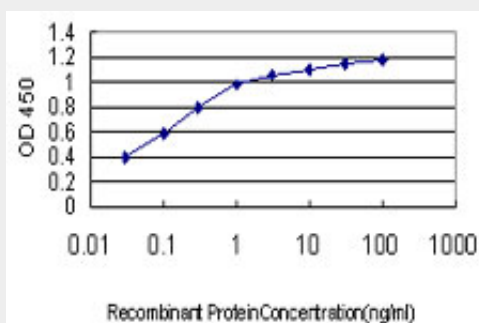
- [Western Blot](#)
- [Blocking Peptides](#)

- [Dot Blot](#)
- [Immunohistochemistry](#)
- [Immunofluorescence](#)
- [Immunoprecipitation](#)
- [Flow Cytometry](#)
- [Cell Culture](#)

#### **PDE1B Antibody (monoclonal) (M01) - Images**



Antibody Reactive Against Recombinant Protein. Western Blot detection against Immunogen (36.63 KDa) .



Detection limit for recombinant GST tagged PDE1B is approximately 0.03ng/ml as a capture antibody.

#### **PDE1B Antibody (monoclonal) (M01) - Background**

Cyclic nucleotide phosphodiesterases (PDEs) catalyze hydrolysis of the cyclic nucleotides cAMP and cGMP to the corresponding nucleoside 5-prime-monophosphates. Mammalian PDEs have been classified into several families based on their biochemical properties. Members of the PDE1 family, such as PDE1B, are calmodulin (see MIM 114180)-dependent PDEs (CaM-PDEs) that are stimulated by a calcium-calmodulin complex (Repaske et al., 1992 [PubMed 1326532]).

#### **PDE1B Antibody (monoclonal) (M01) - References**

1. Distinct metabolism of cyclic adenosine monophosphate in regulatory and helper CD4(+) T cells. Bazhin AV, Kahnert S, Kimpfler S, Schadendorf D, Umansky V. Mol Immunol. 2009 Nov 23. [Epub ahead of print]