

**PDE1B Antibody (monoclonal) (M02)****Mouse monoclonal antibody raised against a partial recombinant PDE1B.****Catalog # AT3252a****Specification**

---

**PDE1B Antibody (monoclonal) (M02) - Product Information**

Application	WB
Primary Accession	<a href="#">Q01064</a>
Other Accession	<a href="#">BC032226</a>
Reactivity	Human
Host	mouse
Clonality	Monoclonal
Isotype	IgG3 Kappa
Calculated MW	61380

**PDE1B Antibody (monoclonal) (M02) - Additional Information****Gene ID** 5153**Other Names**Calcium/calmodulin-dependent 3', 5'-cyclic nucleotide phosphodiesterase 1B, Cam-PDE 1B, 63 kDa  
Cam-PDE, PDE1B, PDE1B1, PDES1B**Target/Specificity**

PDE1B (AAH32226, 437 a.a. ~ 536 a.a) partial recombinant protein with GST tag. MW of the GST tag alone is 26 KDa.

**Dilution**

WB~~1:500~1000

**Format**

Clear, colorless solution in phosphate buffered saline, pH 7.2 .

**Storage**

Store at -20°C or lower. Aliquot to avoid repeated freezing and thawing.

**Precautions**

PDE1B Antibody (monoclonal) (M02) is for research use only and not for use in diagnostic or therapeutic procedures.

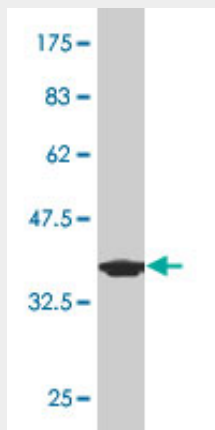
**PDE1B Antibody (monoclonal) (M02) - Protocols**

Provided below are standard protocols that you may find useful for product applications.

- [Western Blot](#)
- [Blocking Peptides](#)
- [Dot Blot](#)

- [Immunohistochemistry](#)
- [Immunofluorescence](#)
- [Immunoprecipitation](#)
- [Flow Cytometry](#)
- [Cell Culture](#)

#### **PDE1B Antibody (monoclonal) (M02) - Images**



Antibody Reactive Against Recombinant Protein. Western Blot detection against Immunogen (36.63 kDa) .

#### **PDE1B Antibody (monoclonal) (M02) - Background**

Cyclic nucleotide phosphodiesterases (PDEs) catalyze hydrolysis of the cyclic nucleotides cAMP and cGMP to the corresponding nucleoside 5-prime-monophosphates. Mammalian PDEs have been classified into several families based on their biochemical properties. Members of the PDE1 family, such as PDE1B, are calmodulin (see MIM 114180)-dependent PDEs (CaM-PDEs) that are stimulated by a calcium-calmodulin complex (Repaske et al., 1992 [PubMed 1326532]).

#### **PDE1B Antibody (monoclonal) (M02) - References**

Variation at the NFATC2 Locus Increases the Risk of Thiazolinedione-Induced Edema in the Diabetes REduction Assessment with ramipril and rosiglitazone Medication (DREAM) Study. Bailey SD, et al. Diabetes Care, 2010 Jul 13. PMID 20628086. Gene-centric association signals for lipids and apolipoproteins identified via the HumanCVD BeadChip. Talmud PJ, et al. Am J Hum Genet, 2009 Nov. PMID 19913121. Cyclic nucleotide phosphodiesterase PDE1C1 in human cardiac myocytes. Vandeput F, et al. J Biol Chem, 2007 Nov 9. PMID 17726023. PDE1B2 regulates cGMP and a subset of the phenotypic characteristics acquired upon macrophage differentiation from a monocyte. Bender AT, et al. Proc Natl Acad Sci U S A, 2006 Jan 10. PMID 16407168. Diversification of transcriptional modulation: large-scale identification and characterization of putative alternative promoters of human genes. Kimura K, et al. Genome Res, 2006 Jan. PMID 16344560.