

PDE3A Antibody (monoclonal) (M01)**Mouse monoclonal antibody raised against a partial recombinant PDE3A.****Catalog # AT3254a****Specification**

PDE3A Antibody (monoclonal) (M01) - Product Information

Application	WB, E
Primary Accession	Q14432
Other Accession	NM_000921
Reactivity	Human
Host	mouse
Clonality	Monoclonal
Isotype	IgG1 Kappa
Calculated MW	124979

PDE3A Antibody (monoclonal) (M01) - Additional Information**Gene ID** 5139**Other Names**

cGMP-inhibited 3', 5'-cyclic phosphodiesterase A, Cyclic GMP-inhibited phosphodiesterase A, CGI-PDE A, PDE3A

Target/Specificity

PDE3A (NP_000912, 533 a.a. ~ 640 a.a) partial recombinant protein with GST tag. MW of the GST tag alone is 26 KDa.

Dilution

WB~~1:500~1000

E~~N/A

Format

Clear, colorless solution in phosphate buffered saline, pH 7.2 .

Storage

Store at -20°C or lower. Aliquot to avoid repeated freezing and thawing.

Precautions

PDE3A Antibody (monoclonal) (M01) is for research use only and not for use in diagnostic or therapeutic procedures.

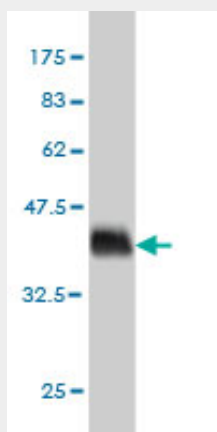
PDE3A Antibody (monoclonal) (M01) - Protocols

Provided below are standard protocols that you may find useful for product applications.

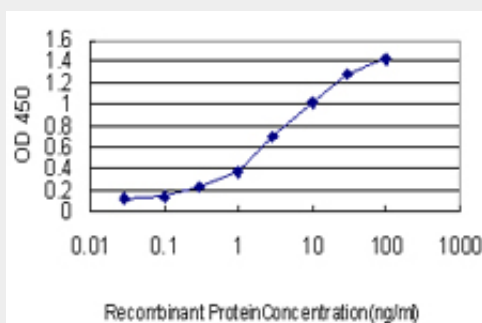
- [Western Blot](#)
- [Blocking Peptides](#)

- [Dot Blot](#)
- [Immunohistochemistry](#)
- [Immunofluorescence](#)
- [Immunoprecipitation](#)
- [Flow Cytometry](#)
- [Cell Culture](#)

PDE3A Antibody (monoclonal) (M01) - Images



Antibody Reactive Against Recombinant Protein. Western Blot detection against Immunogen (37.62 kDa) .



Detection limit for recombinant GST tagged PDE3A is approximately 0.1 ng/ml as a capture antibody.

PDE3A Antibody (monoclonal) (M01) - Background

Cyclic nucleotide phosphodiesterases (PDEs) comprise a complex group of enzymes, and at least 5 major PDE families or classes with distinctive properties have been identified. Members of the cGMP-inhibited cAMP PDE (cGI-PDE) family, such as PDE3A, are characterized by high affinity for cAMP and cGMP and competitive inhibition of their cAMP hydrolytic activity by cGMP and certain positive inotropic agents (Meacci et al., 1992 [PubMed 1315035]).

PDE3A Antibody (monoclonal) (M01) - References

Variation at the NFATC2 Locus Increases the Risk of Thiazolidinedione-Induced Edema in the Diabetes REduction Assessment with ramipril and rosiglitazone Medication (DREAM) Study. Bailey SD, et al. Diabetes Care, 2010 Jul 13. PMID 20628086. Compartmentalized cyclic adenosine 3',5'-monophosphate at the plasma membrane clusters PDE3A and cystic fibrosis transmembrane conductance regulator into microdomains. Penmatsa H, et al. Mol Biol Cell, 2010 Mar. PMID 20089840. A genome-wide association scan of RR and QT interval duration in 3 European genetically isolated populations: the EUROSPAN project. Marroni F, et al. Circ Cardiovasc Genet, 2009 Aug.

PMID 20031603. Gene-centric association signals for lipids and apolipoproteins identified via the HumanCVD BeadChip. Talmud PJ, et al. Am J Hum Genet, 2009 Nov. PMID 19913121. Genetic variants associated with cardiac structure and function: a meta-analysis and replication of genome-wide association data. Vasan RS, et al. JAMA, 2009 Jul 8. PMID 19584346.