

**PECAM1 Antibody (monoclonal) (M01)**

Mouse monoclonal antibody raised against a full length recombinant PECAM1.

Catalog # AT3267a

**Specification**

---

**PECAM1 Antibody (monoclonal) (M01) - Product Information**

Application	IP, WB, IHC
Primary Accession	<a href="#">P16284</a>
Other Accession	<a href="#">BC022512</a>
Reactivity	Human
Host	Mouse
Clonality	Monoclonal
Isotype	IgG1 kappa
Calculated MW	82522

**PECAM1 Antibody (monoclonal) (M01) - Additional Information**

**Gene ID** 5175

**Other Names**

Platelet endothelial cell adhesion molecule, PECAM-1, EndoCAM, GPIIA', PECA1, CD31, PECAM1

**Target/Specificity**

PECAM1 (AAH22512, 29 a.a. ~ 738 a.a) full-length recombinant protein with GST tag. MW of the GST tag alone is 26 KDa.

**Dilution**

WB~~1:500~1000

**Format**

Clear, colorless solution in phosphate buffered saline, pH 7.2 .

**Storage**

Store at -20°C or lower. Aliquot to avoid repeated freezing and thawing.

**Precautions**

PECAM1 Antibody (monoclonal) (M01) is for research use only and not for use in diagnostic or therapeutic procedures.

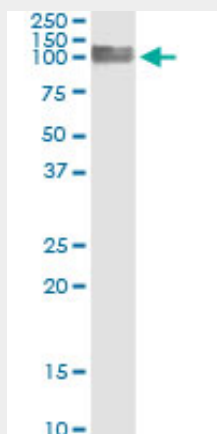
**PECAM1 Antibody (monoclonal) (M01) - Protocols**

Provided below are standard protocols that you may find useful for product applications.

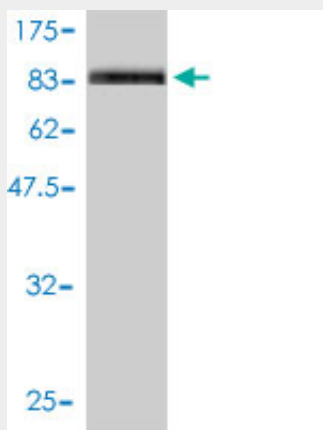
- [Western Blot](#)
- [Blocking Peptides](#)
- [Dot Blot](#)
- [Immunohistochemistry](#)

- [Immunofluorescence](#)
- [Immunoprecipitation](#)
- [Flow Cytometry](#)
- [Cell Culture](#)

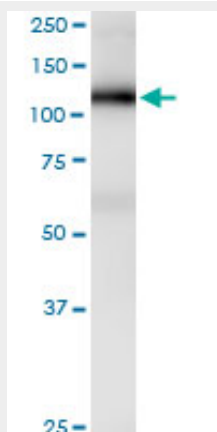
### PECAM1 Antibody (monoclonal) (M01) - Images



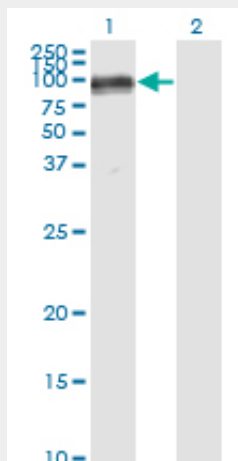
Immunoprecipitation of PECAM1 transfected lysate using anti-PECAM1 monoclonal antibody and Protein A Magnetic Bead ([U0007](#)), and immunoblotted with PECAM1 MaxPab rabbit polyclonal antibody.



Antibody Reactive Against Recombinant Protein. Western Blot detection against Immunogen (103.95 KDa) .



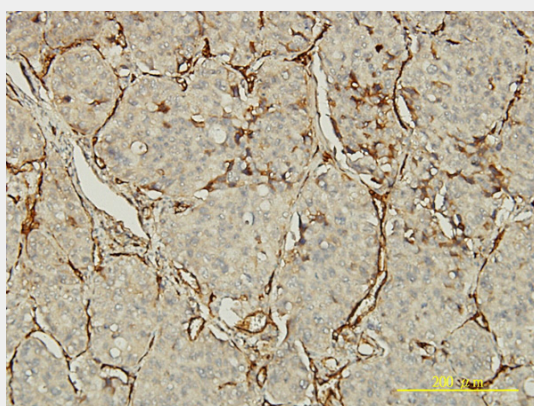
PECAM1 monoclonal antibody (M01), clone 1D2-1A5. Western Blot analysis of PECAM1 expression in human placenta.



Western Blot analysis of PECAM1 expression in transfected 293T cell line by PECAM1 monoclonal antibody (M01), clone 1D2-1A5.

Lane 1: PECAM1 transfected lysate(82.4 KDa).

Lane 2: Non-transfected lysate.



Immunoperoxidase of monoclonal antibody to PECAM1 on formalin-fixed paraffin-embedded human lung, adenosquamous cell carcinoma tissue. [antibody concentration 5 ug/ml]

### **PECAM1 Antibody (monoclonal) (M01) - Background**

The protein encoded by this gene is found on the surface of platelets, monocytes, neutrophils, and some types of T-cells, and makes up a large portion of endothelial cell intercellular junctions. The encoded protein is a member of the immunoglobulin superfamily and is likely involved in leukocyte migration, angiogenesis, and integrin activation.

### **PECAM1 Antibody (monoclonal) (M01) - References**

A genetic association study of maternal and fetal candidate genes that predispose to preterm prelabor rupture of membranes (PROM). Romero R, et al. Am J Obstet Gynecol, 2010 Jul 29. PMID 20673868. Physiogenomic analysis of statin-treated patients: domain-specific counter effects within the ACACB gene on low-density lipoprotein cholesterol? Ruafo G, et al. Pharmacogenomics, 2010 Jul. PMID 20602615. Phosphorylation of leukocyte PECAM and its association with detergent-resistant membranes regulate transendothelial migration. Florey O, et al. J Immunol, 2010 Aug 1. PMID 20581150. Interleukin-9 polymorphism in infants with respiratory syncytial virus

infection: an opposite effect in boys and girls. Schuurhof A, et al. *Pediatr Pulmonol*, 2010 Jun. PMID 20503287. Common polymorphisms in ITGA2, PON1 and THBS2 are associated with coronary atherosclerosis in a candidate gene association study of the Chinese Han population. Wang Y, et al. *J Hum Genet*, 2010 Aug. PMID 20485444.