

PER2 Antibody (monoclonal) (M01)**Mouse monoclonal antibody raised against a partial recombinant PER2.****Catalog # AT3269a****Specification**

PER2 Antibody (monoclonal) (M01) - Product Information

Application	WB, IHC, IF, E
Primary Accession	O15055
Other Accession	NM_022817
Reactivity	Human
Host	Mouse
Clonality	Monoclonal
Isotype	IgG2b Kappa
Calculated MW	136579

PER2 Antibody (monoclonal) (M01) - Additional Information**Gene ID** 8864**Other Names**

Period circadian protein homolog 2, hPER2, Circadian clock protein PERIOD 2, PER2, KIAA0347

Target/Specificity

PER2 (NP_073728, 1 a.a. ~ 100 a.a) partial recombinant protein with GST tag. MW of the GST tag alone is 26 KDa.

Dilution

WB~~1:500~1000

IHC~~1:100~500

IF~~1:50~200

E~~N/A

Format

Clear, colorless solution in phosphate buffered saline, pH 7.2 .

Storage

Store at -20°C or lower. Aliquot to avoid repeated freezing and thawing.

Precautions

PER2 Antibody (monoclonal) (M01) is for research use only and not for use in diagnostic or therapeutic procedures.

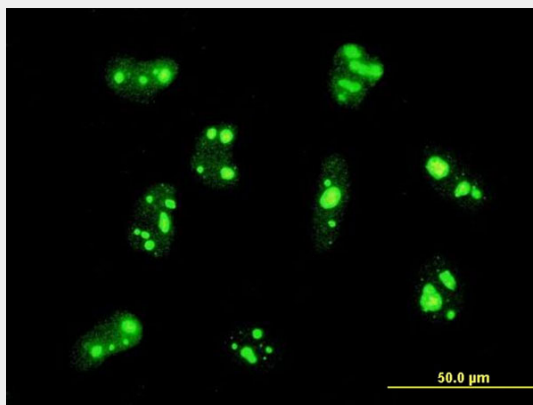
PER2 Antibody (monoclonal) (M01) - Protocols

Provided below are standard protocols that you may find useful for product applications.

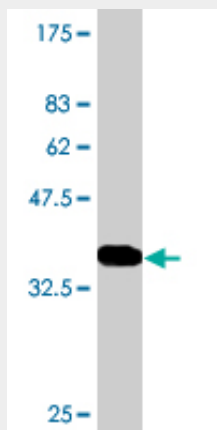
- [Western Blot](#)

- [Blocking Peptides](#)
- [Dot Blot](#)
- [Immunohistochemistry](#)
- [Immunofluorescence](#)
- [Immunoprecipitation](#)
- [Flow Cytometry](#)
- [Cell Culture](#)

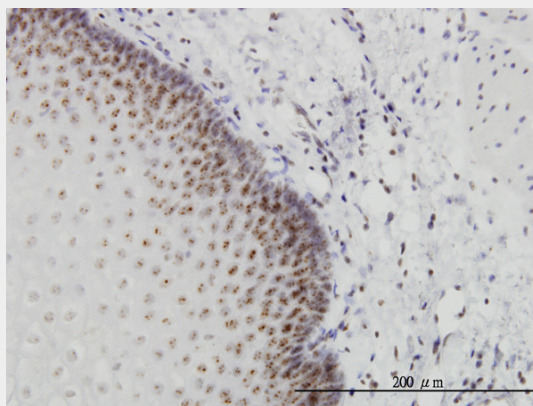
PER2 Antibody (monoclonal) (M01) - Images



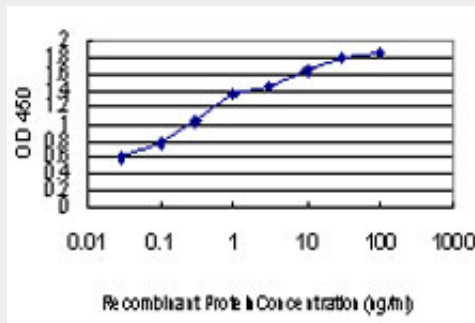
Immunofluorescence of monoclonal antibody to PER2 on HeLa cell . [antibody concentration 10 ug/ml]



Antibody Reactive Against Recombinant Protein. Western Blot detection against Immunogen (36.74 KDa) .



Immunoperoxidase of monoclonal antibody to PER2 on formalin-fixed paraffin-embedded human esophagus. [antibody concentration 1 ug/ml]



Detection limit for recombinant GST tagged PER2 is approximately 0.03ng/ml as a capture antibody.

PER2 Antibody (monoclonal) (M01) - Background

This gene is a member of the Period family of genes and is expressed in a circadian pattern in the suprachiasmatic nucleus, the primary circadian pacemaker in the mammalian brain. Genes in this family encode components of the circadian rhythms of locomotor activity, metabolism, and behavior. Circadian expression in the suprachiasmatic nucleus continues in constant darkness, and a shift in the light/dark cycle evokes a proportional shift of gene expression in the suprachiasmatic nucleus. The specific function of this gene is not yet known.

PER2 Antibody (monoclonal) (M01) - References

1.Prognostic relevance of Period1 (Per1) and Period2 (Per2) expression in human gastric cancer.Zhao H, Zeng ZL, Yang J, Jin Y, Qiu MZ, Hu XY, Han J, Liu KY, Liao JW, Xu RH, Zou QF.Int J Clin Exp Pathol. 2014 Jan 15;7(2):619-30.