

PGEA1 Antibody (monoclonal) (M06)**Mouse monoclonal antibody raised against a partial recombinant CBY1.****Catalog # AT3280a****Specification**

PGEA1 Antibody (monoclonal) (M06) - Product Information

Application	WB, E
Primary Accession	Q9Y3M2
Other Accession	NM_015373
Reactivity	Human
Host	mouse
Clonality	Monoclonal
Isotype	IgG1 Kappa
Calculated MW	14470

PGEA1 Antibody (monoclonal) (M06) - Additional Information**Gene ID** 25776**Other Names**

Protein chibby homolog 1, ARPP-binding protein, Cytosolic leucine-rich protein, PIGEA-14, PKD2 interactor, Golgi and endoplasmic reticulum-associated 1, CBY1, ARB1, C22orf2, CBY, PGEA1

Target/Specificity

CBY1 (NP_056188, 18 a.a. ~ 126 a.a) partial recombinant protein with GST tag. MW of the GST tag alone is 26 KDa.

Dilution

WB~~1:500~1000

E~~N/A

Format

Clear, colorless solution in phosphate buffered saline, pH 7.2 .

Storage

Store at -20°C or lower. Aliquot to avoid repeated freezing and thawing.

Precautions

PGEA1 Antibody (monoclonal) (M06) is for research use only and not for use in diagnostic or therapeutic procedures.

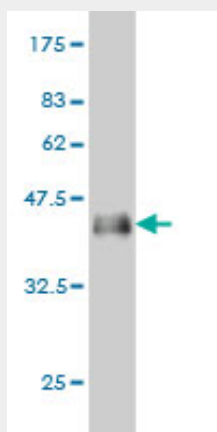
PGEA1 Antibody (monoclonal) (M06) - Protocols

Provided below are standard protocols that you may find useful for product applications.

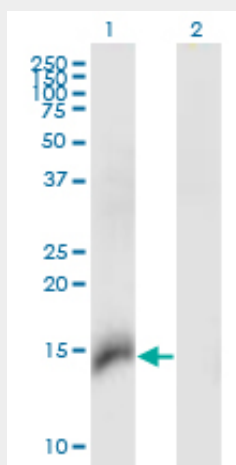
- [Western Blot](#)
- [Blocking Peptides](#)

- [Dot Blot](#)
- [Immunohistochemistry](#)
- [Immunofluorescence](#)
- [Immunoprecipitation](#)
- [Flow Cytometry](#)
- [Cell Culture](#)

PGEA1 Antibody (monoclonal) (M06) - Images

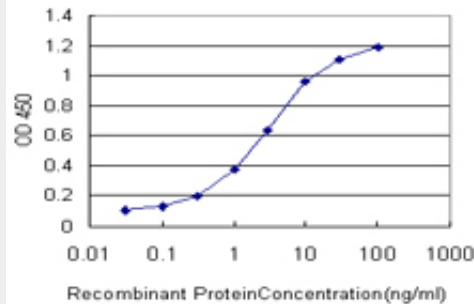


Antibody Reactive Against Recombinant Protein. Western Blot detection against Immunogen (37.73 kDa) .



Western Blot analysis of CBY1 expression in transfected 293T cell line by CBY1 monoclonal antibody (M06), clone 2F2.

Lane 1: CBY1 transfected lysate (Predicted MW: 14.5 kDa).
Lane 2: Non-transfected lysate.



Detection limit for recombinant GST tagged CBY1 is approximately 0.1ng/ml as a capture antibody.

PGEA1 Antibody (monoclonal) (M06) - Background

Beta-catenin is a transcriptional activator and oncoprotein involved in the development of several cancers. The protein encoded by this gene interacts directly with the C-terminal region of beta-catenin, inhibiting oncogenic beta-catenin-mediated transcriptional activation by competing with transcription factors for binding to beta-catenin. Two transcript variants encoding different isoforms have been found for this gene.

PGEA1 Antibody (monoclonal) (M06) - References

Chibby interacts with NBPF1 and clusterin, two candidate tumor suppressors linked to neuroblastoma. Vandepoele K, et al. Exp Cell Res, 2010 Apr 15. PMID 20096688. Nuclear-cytoplasmic shuttling of Chibby controls beta-catenin signaling. Li FQ, et al. Mol Biol Cell, 2010 Jan 15. PMID 19940019. Racial disparity in pathophysiologic pathways of preterm birth based on genetic variants. Menon R, et al. Reprod Biol Endocrinol, 2009 Jun 15. PMID 19527514. Chibby forms a homodimer through a heptad repeat of leucine residues in its C-terminal coiled-coil motif. Mofunanya A, et al. BMC Mol Biol, 2009 May 12. PMID 19435523. Spontaneous preterm birth in African Americans is associated with infection and inflammatory response gene variants. Velez DR, et al. Am J Obstet Gynecol, 2009 Feb. PMID 19019335.