

**PHF1 Antibody (monoclonal) (M05)****Mouse monoclonal antibody raised against a partial recombinant PHF1.****Catalog # AT3295a****Specification**

---

**PHF1 Antibody (monoclonal) (M05) - Product Information**

Application	WB, E
Primary Accession	<a href="#">O43189</a>
Other Accession	<a href="#">NM_024165</a>
Reactivity	Human
Host	mouse
Clonality	Monoclonal
Isotype	IgG2a Kappa
Calculated MW	62106

**PHF1 Antibody (monoclonal) (M05) - Additional Information****Gene ID** 5252**Other Names**

PHD finger protein 1, Protein PHF1, hPHF1, Polycomb-like protein 1, hPCL1, PHF1, PCL1

**Target/Specificity**

PHF1 (NP\_077084, 2 a.a. ~ 100 a.a) partial recombinant protein with GST tag. MW of the GST tag alone is 26 KDa.

**Dilution**

WB~~1:500~1000

**Format**

Clear, colorless solution in phosphate buffered saline, pH 7.2 .

**Storage**

Store at -20°C or lower. Aliquot to avoid repeated freezing and thawing.

**Precautions**

PHF1 Antibody (monoclonal) (M05) is for research use only and not for use in diagnostic or therapeutic procedures.

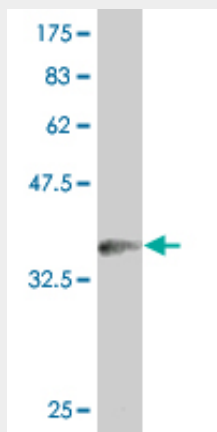
**PHF1 Antibody (monoclonal) (M05) - Protocols**

Provided below are standard protocols that you may find useful for product applications.

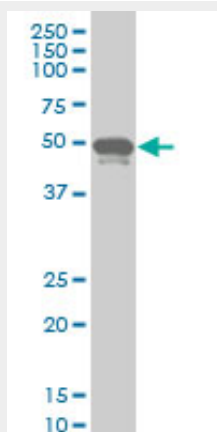
- [Western Blot](#)
- [Blocking Peptides](#)
- [Dot Blot](#)
- [Immunohistochemistry](#)

- [Immunofluorescence](#)
- [Immunoprecipitation](#)
- [Flow Cytometry](#)
- [Cell Culture](#)

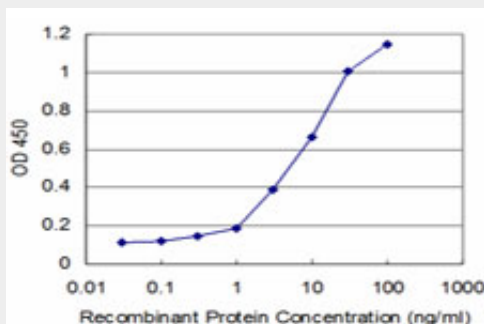
#### PHF1 Antibody (monoclonal) (M05) - Images



Antibody Reactive Against Recombinant Protein. Western Blot detection against Immunogen (36.63 kDa) .



PHF1 monoclonal antibody (M05), clone 4F5 Western Blot analysis of PHF1 expression in A-431 (Cat # AT3295a )



Detection limit for recombinant GST tagged PHF1 is approximately 0.3ng/ml as a capture antibody.

#### PHF1 Antibody (monoclonal) (M05) - Background

This gene encodes a Polycomb group protein. The protein is a component of a histone H3 lysine-27 (H3K27)-specific methyltransferase complex, and functions in transcriptional repression of homeotic genes. The protein is also recruited to double-strand breaks, and reduced protein levels results in X-ray sensitivity and increased homologous recombination. Multiple transcript variants encoding different isoforms have been found for this gene.

#### **PHF1 Antibody (monoclonal) (M05) - References**

High-density SNP screening of the major histocompatibility complex in systemic lupus erythematosus demonstrates strong evidence for independent susceptibility regions. Barcellos LF, et al. PLoS Genet, 2009 Oct. PMID 19851445. Transcriptomic and genetic studies identify IL-33 as a candidate gene for Alzheimer's disease. Chapuis J, et al. Mol Psychiatry, 2009 Nov. PMID 19204726. An endometrial stromal sarcoma cell line with the JAZF1/PHF1 chimera. Panagopoulos I, et al. Cancer Genet Cytogenet, 2008 Sep. PMID 18722875. A polycomb group protein, PHF1, is involved in the response to DNA double-strand breaks in human cell. Hong Z, et al. Nucleic Acids Res, 2008 May. PMID 18385154. Ezh2 requires PHF1 to efficiently catalyze H3 lysine 27 trimethylation in vivo. Sarma K, et al. Mol Cell Biol, 2008 Apr. PMID 18285464.