

**PI3 Antibody (monoclonal) (M01)****Mouse monoclonal antibody raised against a full length recombinant PI3.****Catalog # AT3305a****Specification**

---

**PI3 Antibody (monoclonal) (M01) - Product Information**

Application	WB, E
Primary Accession	<a href="#">P19957</a>
Other Accession	<a href="#">BC010952</a>
Reactivity	Human
Host	mouse
Clonality	Monoclonal
Isotype	IgG1 kappa
Calculated MW	12270

**PI3 Antibody (monoclonal) (M01) - Additional Information****Gene ID** 5266**Other Names**

Elafin, Elastase-specific inhibitor, ESI, Peptidase inhibitor 3, PI-3, Protease inhibitor WAP3, Skin-derived antileukoproteinase, SKALP, WAP four-disulfide core domain protein 14, PI3, WAP3, WFDC14

**Target/Specificity**

PI3 (AAH10952, 1 a.a. ~ 117 a.a) full-length recombinant protein with GST tag. MW of the GST tag alone is 26 KDa.

**Dilution**

WB~~1:500~1000

**Format**

Clear, colorless solution in phosphate buffered saline, pH 7.2 .

**Storage**

Store at -20°C or lower. Aliquot to avoid repeated freezing and thawing.

**Precautions**

PI3 Antibody (monoclonal) (M01) is for research use only and not for use in diagnostic or therapeutic procedures.

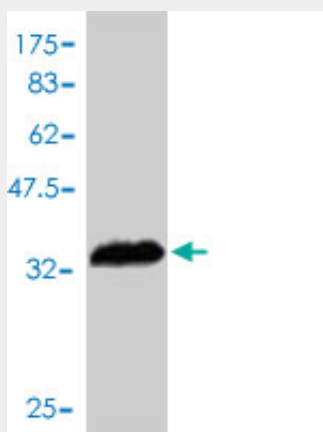
**PI3 Antibody (monoclonal) (M01) - Protocols**

Provided below are standard protocols that you may find useful for product applications.

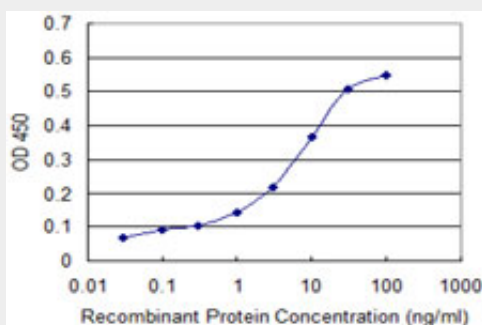
- [Western Blot](#)
- [Blocking Peptides](#)

- [Dot Blot](#)
- [Immunohistochemistry](#)
- [Immunofluorescence](#)
- [Immunoprecipitation](#)
- [Flow Cytometry](#)
- [Cell Culture](#)

### PI3 Antibody (monoclonal) (M01) - Images



Antibody Reactive Against Recombinant Protein. Western Blot detection against Immunogen (38.61 kDa) .



Detection limit for recombinant GST tagged PI3 is approximately 0.1 ng/ml as a capture antibody.

### PI3 Antibody (monoclonal) (M01) - Background

This gene encodes an elastase-specific inhibitor that functions as an antimicrobial peptide against Gram-positive and Gram-negative bacteria. The protein contains a WAP-type four-disulfide core (WFDC) domain, and is thus a member of the WFDC domain family. Most WFDC gene members are localized to chromosome 20q12-q13 in two clusters: centromeric and telomeric. This gene belongs to the centromeric cluster. Expression of this gene is upregulated by bacterial lipopolysaccharides and cytokines.

### PI3 Antibody (monoclonal) (M01) - References

Elafin is a biomarker of graft-versus-host disease of the skin. Paczesny S, et al. Sci Transl Med, 2010 Jan 6. PMID 20371463. Genetic risk factors for hepatopulmonary syndrome in patients with advanced liver disease. Roberts KE, et al. Gastroenterology, 2010 Jul. PMID 20346360. Overexpression of elafin in ovarian carcinoma is driven by genomic gains and activation of the nuclear factor kappaB pathway and is associated with poor overall survival. Clauss A, et al. Neoplasia, 2010 Feb. PMID 20126474. Human gammadelta T cells produce the protease inhibitor and antimicrobial peptide elafin. Marischen L, et al. Scand J Immunol, 2009 Dec. PMID

19906197.Trappin-2/Elafin: a novel innate anti-human immunodeficiency virus-1 molecule of the human female reproductive tract. Ghosh M, et al. Immunology, 2010 Feb. PMID 19824918.