

PLA2G12A Antibody (monoclonal) (M01)

Mouse monoclonal antibody raised against a partial recombinant PLA2G12A.

Catalog # AT3327a

Specification

PLA2G12A Antibody (monoclonal) (M01) - Product Information

Application	WB, E
Primary Accession	O9BZM1
Other Accession	NM_030821
Reactivity	Human
Host	mouse
Clonality	Monoclonal
Isotype	IgG1 Kappa
Calculated MW	21067

PLA2G12A Antibody (monoclonal) (M01) - Additional Information

Gene ID 81579

Other Names

Group XIIA secretory phospholipase A2, GXII sPLA2, sPLA2-XII, Phosphatidylcholine 2-acylhydrolase 12A, PLA2G12A, PLA2G12

Target/Specificity

PLA2G12A (NP_110448, 90 a.a. ~ 188 a.a) partial recombinant protein with GST tag. MW of the GST tag alone is 26 KDa.

Dilution

WB~~1:500~1000

E~~N/A

Format

Clear, colorless solution in phosphate buffered saline, pH 7.2 .

Storage

Store at -20°C or lower. Aliquot to avoid repeated freezing and thawing.

Precautions

PLA2G12A Antibody (monoclonal) (M01) is for research use only and not for use in diagnostic or therapeutic procedures.

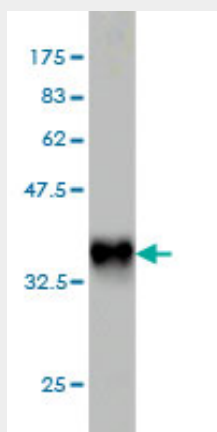
PLA2G12A Antibody (monoclonal) (M01) - Protocols

Provided below are standard protocols that you may find useful for product applications.

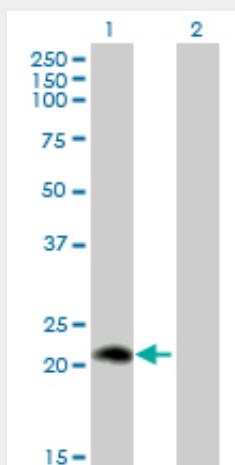
- [Western Blot](#)
- [Blocking Peptides](#)

- [Dot Blot](#)
- [Immunohistochemistry](#)
- [Immunofluorescence](#)
- [Immunoprecipitation](#)
- [Flow Cytometry](#)
- [Cell Culture](#)

PLA2G12A Antibody (monoclonal) (M01) - Images



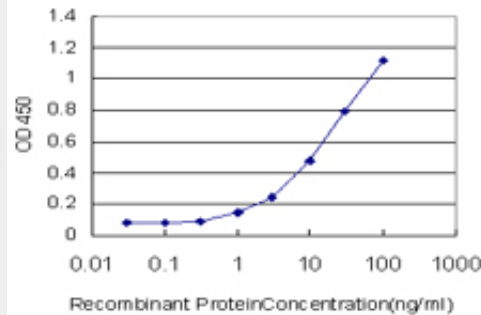
Antibody Reactive Against Recombinant Protein. Western Blot detection against Immunogen (36.63 kDa) .



Western Blot analysis of PLA2G12A expression in transfected 293T cell line by PLA2G12A monoclonal antibody (M01), clone 1D11.

Lane 1: PLA2G12A transfected lysate(21.1 kDa).

Lane 2: Non-transfected lysate.



Detection limit for recombinant GST tagged PLA2G12A is approximately 0.3ng/ml as a capture antibody.

PLA2G12A Antibody (monoclonal) (M01) - Background

Secreted phospholipase A2 (sPLA2) enzymes liberate arachidonic acid from phospholipids for production of eicosanoids and exert a variety of physiologic and pathologic effects. Group XII sPLA2s, such as PLA2G12A, have relatively low specific activity and are structurally and functionally distinct from other sPLA2s (Gelb et al., 2000 [PubMed 11031251]).

PLA2G12A Antibody (monoclonal) (M01) - References

Variation at the NFATC2 Locus Increases the Risk of Thiazolinedione-Induced Edema in the Diabetes REduction Assessment with ramipril and rosiglitazone Medication (DREAM) Study. Bailey SD, et al. Diabetes Care, 2010 Jul 13. PMID 20628086. A systematic gene-based screen of chr4q22-q32 identifies association of a novel susceptibility gene, DKK2, with the quantitative trait of alcohol dependence symptom counts. Kalsi G, et al. Hum Mol Genet, 2010 Jun 15. PMID 20332099. Gene-centric association signals for lipids and apolipoproteins identified via the HumanCVD BeadChip. Talmud PJ, et al. Am J Hum Genet, 2009 Nov. PMID 19913121. Association between genetic variants in VEGF, ERCC3 and occupational benzene haematotoxicity. Hosgood HD 3rd, et al. Occup Environ Med, 2009 Dec. PMID 19773279. Signal sequence and keyword trap in silico for selection of full-length human cDNAs encoding secretion or membrane proteins from oligo-capped cDNA libraries. Otsuki T, et al. DNA Res, 2005. PMID 16303743.