

PMS1 Antibody (monoclonal) (M01)**Mouse monoclonal antibody raised against a partial recombinant PMS1.****Catalog # AT3357a****Specification**

PMS1 Antibody (monoclonal) (M01) - Product Information

Application	WB, E
Primary Accession	P54277
Other Accession	NM_000534
Reactivity	Human
Host	mouse
Clonality	Monoclonal
Isotype	IgG1 Kappa
Calculated MW	105830

PMS1 Antibody (monoclonal) (M01) - Additional Information**Gene ID** 5378**Other Names**

PMS1 protein homolog 1, DNA mismatch repair protein PMS1, PMS1, PMSL1

Target/Specificity

PMS1 (NP_000525, 26 a.a. ~ 135 a.a) partial recombinant protein with GST tag. MW of the GST tag alone is 26 KDa.

Dilution

WB~~1:500~1000

E~~N/A

Format

Clear, colorless solution in phosphate buffered saline, pH 7.2 .

Storage

Store at -20°C or lower. Aliquot to avoid repeated freezing and thawing.

Precautions

PMS1 Antibody (monoclonal) (M01) is for research use only and not for use in diagnostic or therapeutic procedures.

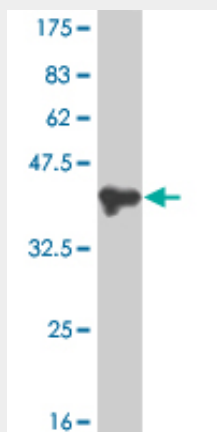
PMS1 Antibody (monoclonal) (M01) - Protocols

Provided below are standard protocols that you may find useful for product applications.

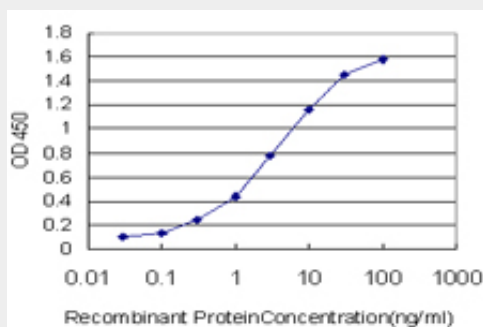
- [Western Blot](#)
- [Blocking Peptides](#)
- [Dot Blot](#)

- [Immunohistochemistry](#)
- [Immunofluorescence](#)
- [Immunoprecipitation](#)
- [Flow Cytometry](#)
- [Cell Culture](#)

PMS1 Antibody (monoclonal) (M01) - Images



Antibody Reactive Against Recombinant Protein. Western Blot detection against Immunogen (37.84 kDa) .



Detection limit for recombinant GST tagged PMS1 is approximately 0.03ng/ml as a capture antibody.

PMS1 Antibody (monoclonal) (M01) - Background

This gene encodes a protein belonging to the DNA mismatch repair mutL/hexB family. This protein is thought to be involved in the repair of DNA mismatches, and it can form heterodimers with MLH1, a known DNA mismatch repair protein. Mutations in this gene cause hereditary nonpolyposis colorectal cancer type 3 (HNPCC3) either alone or in combination with mutations in other genes involved in the HNPCC phenotype, which is also known as Lynch syndrome.

PMS1 Antibody (monoclonal) (M01) - References

Comprehensive screen of genetic variation in DNA repair pathway genes and postmenopausal breast cancer risk. Monsees GM, et al. Breast Cancer Res Treat, 2010 May 23. PMID 20496165. Recapitulation of two genomewide association studies on blood pressure and essential hypertension in the Korean population. Hong KW, et al. J Hum Genet, 2010 Jun. PMID 20414254. Genetic susceptibility to distinct bladder cancer subphenotypes. Guey LT, et al. Eur Urol, 2010 Feb. PMID 19692168. PTEN identified as important risk factor of chronic obstructive pulmonary disease. Hosgood HD 3rd, et al. Respir Med, 2009 Dec. PMID 19625176. A genome-wide association study of hypertension and blood pressure in African Americans. Adeyemo A, et al. PLoS Genet, 2009

Jul. PMID 19609347.