

PPA1 Antibody (monoclonal) (M01)**Mouse monoclonal antibody raised against a partial recombinant PPA1.****Catalog # AT3391a****Specification**

PPA1 Antibody (monoclonal) (M01) - Product Information

Application	WB, E
Primary Accession	Q15181
Other Accession	NM_021129
Reactivity	Human, Rat
Host	mouse
Clonality	Monoclonal
Isotype	IgG1 Kappa
Calculated MW	32660

PPA1 Antibody (monoclonal) (M01) - Additional Information**Gene ID** 5464**Other Names**

Inorganic pyrophosphatase, Pyrophosphate phospho-hydrolase, PPase, PPA1, IOPPP, PP

Target/Specificity

PPA1 (NP_066952, 10 a.a. ~ 111 a.a) partial recombinant protein with GST tag. MW of the GST tag alone is 26 KDa.

Dilution

WB~~1:500~1000

E~~N/A

Format

Clear, colorless solution in phosphate buffered saline, pH 7.2 .

Storage

Store at -20°C or lower. Aliquot to avoid repeated freezing and thawing.

Precautions

PPA1 Antibody (monoclonal) (M01) is for research use only and not for use in diagnostic or therapeutic procedures.

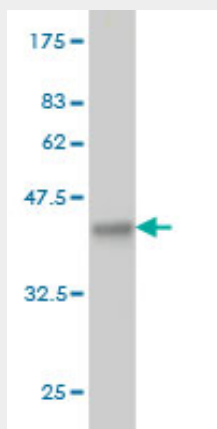
PPA1 Antibody (monoclonal) (M01) - Protocols

Provided below are standard protocols that you may find useful for product applications.

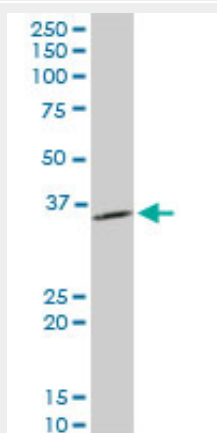
- [Western Blot](#)
- [Blocking Peptides](#)
- [Dot Blot](#)

- [Immunohistochemistry](#)
- [Immunofluorescence](#)
- [Immunoprecipitation](#)
- [Flow Cytometry](#)
- [Cell Culture](#)

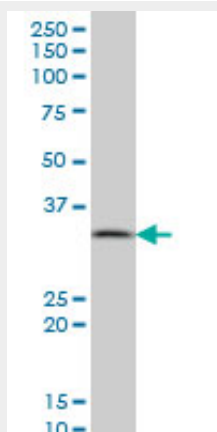
PPA1 Antibody (monoclonal) (M01) - Images



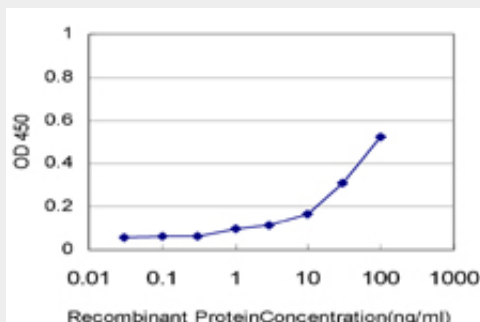
Antibody Reactive Against Recombinant Protein. Western Blot detection against Immunogen (36.96 kDa) .



PPA1 monoclonal antibody (M01), clone 3B2. Western Blot analysis of PPA1 expression in PC-12 (Cat # AT3391a)



PPA1 monoclonal antibody (M01), clone 3B2 Western Blot analysis of PPA1 expression in A-431 (Cat # AT3391a)



Detection limit for recombinant GST tagged PPA1 is approximately 1ng/ml as a capture antibody.

PPA1 Antibody (monoclonal) (M01) - Background

The protein encoded by this gene is a member of the inorganic pyrophosphatase (PPase) family. PPases catalyze the hydrolysis of pyrophosphate to inorganic phosphate, which is important for the phosphate metabolism of cells. Studies of a similar protein in bovine suggested a cytoplasmic localization of this enzyme.

PPA1 Antibody (monoclonal) (M01) - References

Localization of the structural genes for hexokinase-1 and inorganic pyrophosphatase on region (pter-->q24) of human chromosome 10. Chern CJ. Cytogenet Cell Genet, 1976. PMID 17494625.[Identification of the proteins interacting with neuroprotective peptide humanin in a yeast two-hybrid system] Maksimov VV, et al. Genetika, 2006 Feb. PMID 16583711. Proteomic analysis of SUMO4 substrates in HEK293 cells under serum starvation-induced stress. Guo D, et al. Biochem Biophys Res Commun, 2005 Dec 2. PMID 16236267. A human protein-protein interaction network: a resource for annotating the proteome. Stelzl U, et al. Cell, 2005 Sep 23. PMID 16169070. Proteomics of human umbilical vein endothelial cells applied to etoposide-induced apoptosis. Bruneel A, et al. Proteomics, 2005 Oct. PMID 16130169.