

PPIE Antibody (monoclonal) (M02)**Mouse monoclonal antibody raised against a partial recombinant PPIE.****Catalog # AT3401a****Specification**

PPIE Antibody (monoclonal) (M02) - Product Information

Application	WB, IF, E
Primary Accession	O9UNP9
Other Accession	NM_006112
Reactivity	Human, Mouse, Rat
Host	Mouse
Clonality	Monoclonal
Isotype	IgG2a Kappa
Calculated MW	33431

PPIE Antibody (monoclonal) (M02) - Additional Information**Gene ID** 10450**Other Names**

Peptidyl-prolyl cis-trans isomerase E, PPlase E, Cyclophilin E, Cyclophilin-33, Rotamase E, PPIE, CYP33

Target/Specificity

PPIE (NP_006103, 2 a.a. ~ 100 a.a) partial recombinant protein with GST tag. MW of the GST tag alone is 26 KDa.

Dilution

WB~~1:500~1000

IF~~1:50~200

E~~N/A

Format

Clear, colorless solution in phosphate buffered saline, pH 7.2 .

Storage

Store at -20°C or lower. Aliquot to avoid repeated freezing and thawing.

Precautions

PPIE Antibody (monoclonal) (M02) is for research use only and not for use in diagnostic or therapeutic procedures.

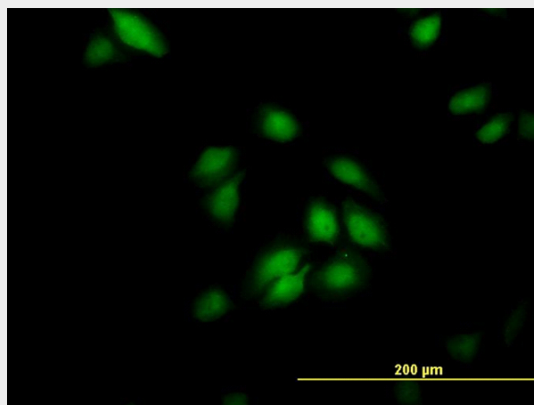
PPIE Antibody (monoclonal) (M02) - Protocols

Provided below are standard protocols that you may find useful for product applications.

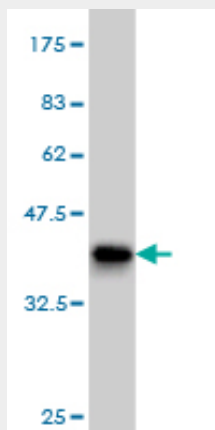
- [Western Blot](#)

- [Blocking Peptides](#)
- [Dot Blot](#)
- [Immunohistochemistry](#)
- [Immunofluorescence](#)
- [Immunoprecipitation](#)
- [Flow Cytometry](#)
- [Cell Culture](#)

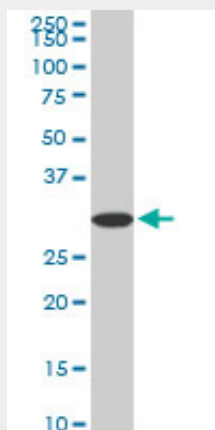
PPIE Antibody (monoclonal) (M02) - Images



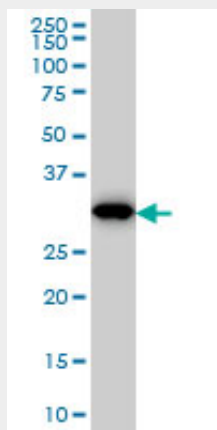
Immunofluorescence of monoclonal antibody to PPIE on HeLa cell. [antibody concentration 10 ug/ml]



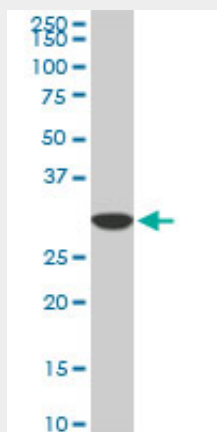
Antibody Reactive Against Recombinant Protein. Western Blot detection against Immunogen (36.63 KDa) .



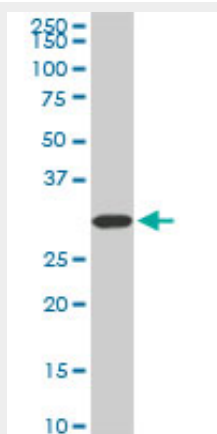
PPIE monoclonal antibody (M02), clone 2F5. Western Blot analysis of PPIE expression in PC-12((Cat # AT3401a)



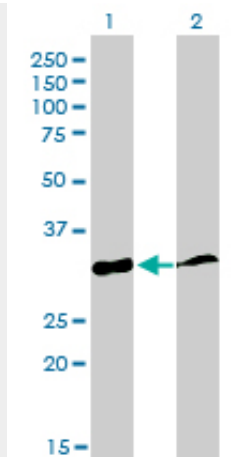
PPIE monoclonal antibody (M02), clone 2F5 Western Blot analysis of PPIE expression in Hela S3 NE ((Cat # AT3401a)



PPIE monoclonal antibody (M02), clone 2F5. Western Blot analysis of PPIE expression in Raw 264.7((Cat # AT3401a)



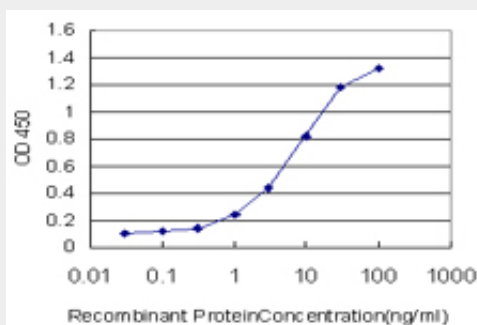
PPIE monoclonal antibody (M02), clone 2F5. Western Blot analysis of PPIE expression in NIH/3T3((Cat # AT3401a)



Western Blot analysis of PPIE expression in transfected 293T cell line by PPIE monoclonal antibody (M02), clone 2F5.

Lane 1: PPIE transfected lysate(33.4 KDa).

Lane 2: Non-transfected lysate.



Detection limit for recombinant GST tagged PPIE is approximately 0.1ng/ml as a capture antibody.

PPIE Antibody (monoclonal) (M02) - Background

The protein encoded by this gene is a member of the peptidyl-prolyl cis-trans isomerase (PPIase) family. PPIases catalyze the cis-trans isomerization of proline imidic peptide bonds in oligopeptides and accelerate the folding of proteins. This protein contains a highly conserved cyclophilin (CYP) domain as well as an RNA-binding domain. It was shown to possess PPIase and protein folding activities, and it also exhibits RNA-binding activity. Alternative splicing results in multiple transcript variants. A related pseudogene, which is also located on chromosome 1, has been identified.

PPIE Antibody (monoclonal) (M02) - References

The PHD3 domain of MLL acts as a CYP33-regulated switch between MLL-mediated activation and repression . Park S, et al. Biochemistry, 2010 Aug 10. PMID 20677832. Pro isomerization in MLL1 PHD3-bromo cassette connects H3K4me readout to Cyp33 and HDAC-mediated repression. Wang Z, et al. Cell, 2010 Jun 25. PMID 20541251. Use of genome-wide expression data to mine the Gray Zone of GWA studies leads to novel candidate obesity genes. Naukkarinen J, et al. PLoS Genet, 2010 Jun 3. PMID 20532202. Molecular mechanism of MLL PHD3 and RNA recognition by the Cyp33 RRM domain. Hom RA, et al. J Mol Biol, 2010 Jul 9. PMID 20460131. Loss of MLL PHD finger 3 is necessary for MLL-ENL-induced hematopoietic stem cell immortalization. Chen J, et al. Cancer Res, 2008 Aug 1. PMID 18676843.