

PPIL1 Antibody (monoclonal) (M01)**Mouse monoclonal antibody raised against a partial recombinant PPIL1.****Catalog # AT3403a****Specification**

PPIL1 Antibody (monoclonal) (M01) - Product Information

Application	WB, E
Primary Accession	O9Y3C6
Other Accession	NM_016059
Reactivity	Human
Host	mouse
Clonality	Monoclonal
Isotype	IgG2a Kappa
Calculated MW	18237

PPIL1 Antibody (monoclonal) (M01) - Additional Information**Gene ID** 51645**Other Names**

Peptidyl-prolyl cis-trans isomerase-like 1, PPlase, Rotamase PPIL1, PPIL1, CYPL1

Target/Specificity

PPIL1 (NP_057143, 76 a.a. ~ 166 a.a) partial recombinant protein with GST tag. MW of the GST tag alone is 26 KDa.

Dilution

WB~~1:500~1000

E~~N/A

Format

Clear, colorless solution in phosphate buffered saline, pH 7.2 .

Storage

Store at -20°C or lower. Aliquot to avoid repeated freezing and thawing.

Precautions

PPIL1 Antibody (monoclonal) (M01) is for research use only and not for use in diagnostic or therapeutic procedures.

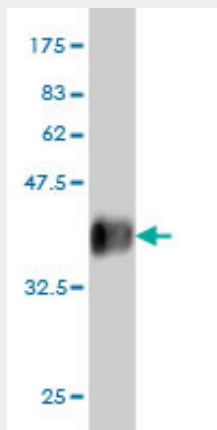
PPIL1 Antibody (monoclonal) (M01) - Protocols

Provided below are standard protocols that you may find useful for product applications.

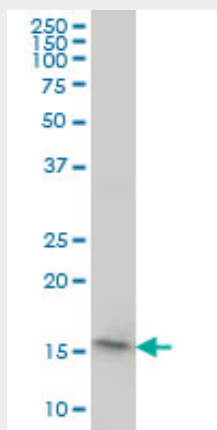
- [Western Blot](#)
- [Blocking Peptides](#)
- [Dot Blot](#)

- [Immunohistochemistry](#)
- [Immunofluorescence](#)
- [Immunoprecipitation](#)
- [Flow Cytometry](#)
- [Cell Culture](#)

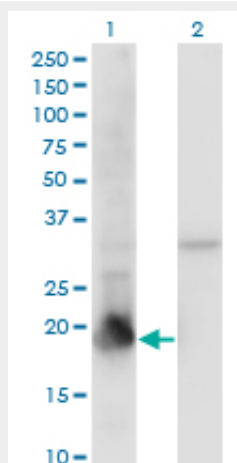
PPIL1 Antibody (monoclonal) (M01) - Images



Antibody Reactive Against Recombinant Protein. Western Blot detection against Immunogen (35.75 kDa) .



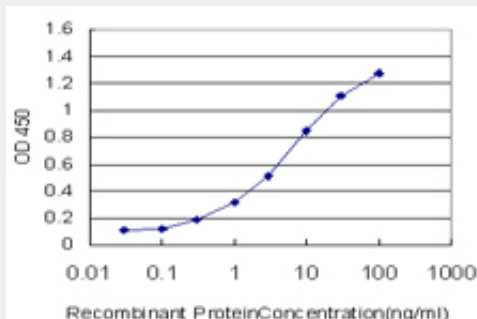
PPIL1 monoclonal antibody (M01), clone 2C2 Western Blot analysis of PPIL1 expression in HeLa (Cat # AT3403a)



Western Blot analysis of PPIL1 expression in transfected 293T cell line by PPIL1 monoclonal antibody (M01), clone 2C2.

Lane 1: PPIL1 transfected lysate(18.2 KDa).

Lane 2: Non-transfected lysate.



Detection limit for recombinant GST tagged PPIL1 is approximately 0.1ng/ml as a capture antibody.

PPIL1 Antibody (monoclonal) (M01) - Background

This gene is a member of the cyclophilin family of peptidylprolyl isomerases (PPlases). The cyclophilins are a highly conserved, ubiquitous family, members of which play an important role in protein folding, immunosuppression by cyclosporin A, and infection of HIV-1 virions. Based on similarity to other PPlases, this protein could accelerate the folding of proteins and might catalyze the cis-trans isomerization of proline imidic peptide bonds in oligopeptides.

PPIL1 Antibody (monoclonal) (M01) - References

A large intrinsically disordered region in SKIP and its disorder-order transition induced by PPIL1 binding revealed by NMR. Wang X, et al. J Biol Chem, 2010 Feb 12. PMID 20007319. Solution structure of human peptidyl prolyl isomerase-like protein 1 and insights into its interaction with SKIP. Xu C, et al. J Biol Chem, 2006 Jun 9. PMID 16595688. Backbone and side chain assignments of human Peptidylprolyl Isomerase Like 1 (hPPIL1). Xu C, et al. J Biomol NMR, 2005 Feb. PMID 15772761. The status, quality, and expansion of the NIH full-length cDNA project: the Mammalian Gene Collection (MGC). Gerhard DS, et al. Genome Res, 2004 Oct. PMID 15489334. The DNA sequence and analysis of human chromosome 6. Mungall AJ, et al. Nature, 2003 Oct 23. PMID 14574404.