

**PPP2R2C Antibody (monoclonal) (M01)****Mouse monoclonal antibody raised against a partial recombinant PPP2R2C.****Catalog # AT3413a****Specification**

---

**PPP2R2C Antibody (monoclonal) (M01) - Product Information**

Application	WB, E
Primary Accession	<a href="#">O9Y2T4</a>
Other Accession	<a href="#">NM_020416</a>
Reactivity	Human
Host	mouse
Clonality	Monoclonal
Isotype	IgG1 Kappa
Calculated MW	51515

**PPP2R2C Antibody (monoclonal) (M01) - Additional Information****Gene ID** 5522**Other Names**

Serine/threonine-protein phosphatase 2A 55 kDa regulatory subunit B gamma isoform, IMYPNO1, PP2A subunit B isoform B55-gamma, PP2A subunit B isoform PR55-gamma, PP2A subunit B isoform R2-gamma, PP2A subunit B isoform gamma, PPP2R2C

**Target/Specificity**

PPP2R2C (NP\_065149, 1 a.a. ~ 110 a.a) partial recombinant protein with GST tag. MW of the GST tag alone is 26 KDa.

**Dilution**

WB~~1:500~1000

E~~N/A

**Format**

Clear, colorless solution in phosphate buffered saline, pH 7.2 .

**Storage**

Store at -20°C or lower. Aliquot to avoid repeated freezing and thawing.

**Precautions**

PPP2R2C Antibody (monoclonal) (M01) is for research use only and not for use in diagnostic or therapeutic procedures.

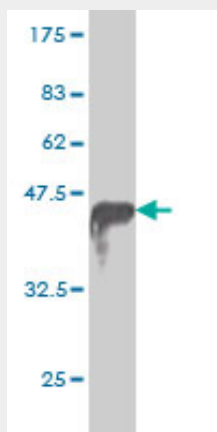
**PPP2R2C Antibody (monoclonal) (M01) - Protocols**

Provided below are standard protocols that you may find useful for product applications.

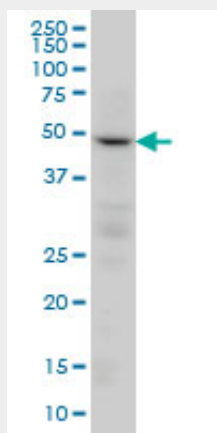
- [Western Blot](#)

- [Blocking Peptides](#)
- [Dot Blot](#)
- [Immunohistochemistry](#)
- [Immunofluorescence](#)
- [Immunoprecipitation](#)
- [Flow Cytometry](#)
- [Cell Culture](#)

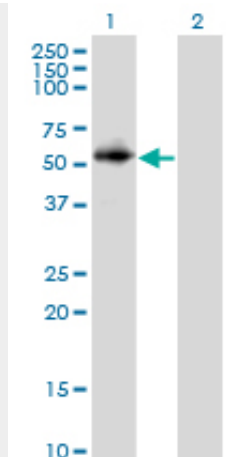
#### PPP2R2C Antibody (monoclonal) (M01) - Images



Antibody Reactive Against Recombinant Protein. Western Blot detection against Immunogen (37.84 KDa) .



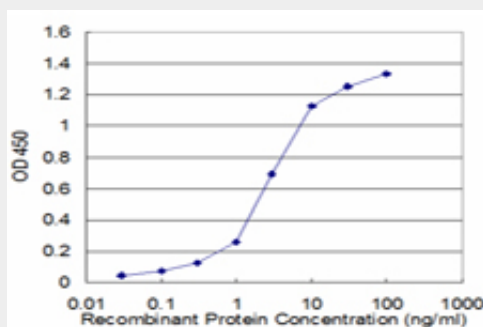
PPP2R2C monoclonal antibody (M01), clone 6D1 Western Blot analysis of PPP2R2C expression in HeLa (Cat # AT3413a)



Western Blot analysis of PPP2R2C expression in transfected 293T cell line by PPP2R2C monoclonal antibody (M01), clone 6D1.

Lane 1: PPP2R2C transfected lysate(49.5 KDa).

Lane 2: Non-transfected lysate.



Detection limit for recombinant GST tagged PPP2R2C is approximately 0.1ng/ml as a capture antibody.

### PPP2R2C Antibody (monoclonal) (M01) - Background

The product of this gene belongs to the phosphatase 2 regulatory subunit B family. Protein phosphatase 2 is one of the four major Ser/Thr phosphatases, and it is implicated in the negative control of cell growth and division. It consists of a common heteromeric core enzyme, which is composed of a catalytic subunit and a constant regulatory subunit, that associates with a variety of regulatory subunits. The B regulatory subunit might modulate substrate selectivity and catalytic activity. This gene encodes a gamma isoform of the regulatory subunit B55 subfamily. Alternatively spliced transcript variants encoding different isoforms have been identified.

### PPP2R2C Antibody (monoclonal) (M01) - References

1.PPP2R2C Loss Promotes Castration-Resistance and Is Associated with Increased Prostate Cancer-Specific Mortality.Bluemn EG, Spencer ES, Mecham B, Gordon RR, Coleman I, Lewinshtein D, Mostaghel E, Zhang X, Annis J, Grandori C, Porter C, Nelson PSMol Cancer Res. 2013 Jun;11(6):568-78. doi: 10.1158/1541-7786.MCR-12-0710. Epub 2013 Mar 14.2.Association of decreased expression of protein phosphatase 2A subunit PR55{gamma} (PPP2R2C) with an increased risk of metastases and prostate cancer-specific mortality.Spencer ES, Bluemn EG, Johnston R, Zhang X, Gordon RR, Lewinshtein D, Lucas J, Nelson P, Porter CR.J Clin Oncol (Meeting Abstracts) May 2012 vol. 30 no. 15\_suppl 4669