

PRC1 Antibody (monoclonal) (M01)**Mouse monoclonal antibody raised against a full length recombinant PRC1.****Catalog # AT3416a****Specification**

PRC1 Antibody (monoclonal) (M01) - Product Information

Application	WB
Primary Accession	O43663
Other Accession	BC003138
Reactivity	Human
Host	mouse
Clonality	Monoclonal
Isotype	IgG1 kappa
Calculated MW	71607

PRC1 Antibody (monoclonal) (M01) - Additional Information**Gene ID** 9055**Other Names**

Protein regulator of cytokinesis 1, PRC1 {ECO:0000312|EMBL:AAC026881}

Target/Specificity

PRC1 (AAH03138.1, 1 a.a. ~ 620 a.a) full-length recombinant protein with GST tag. MW of the GST tag alone is 26 KDa.

Dilution

WB~~1:500~1000

Format

Clear, colorless solution in phosphate buffered saline, pH 7.2 .

Storage

Store at -20°C or lower. Aliquot to avoid repeated freezing and thawing.

Precautions

PRC1 Antibody (monoclonal) (M01) is for research use only and not for use in diagnostic or therapeutic procedures.

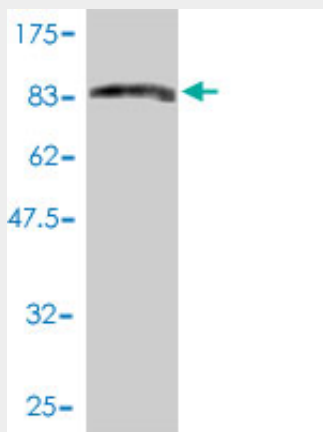
PRC1 Antibody (monoclonal) (M01) - Protocols

Provided below are standard protocols that you may find useful for product applications.

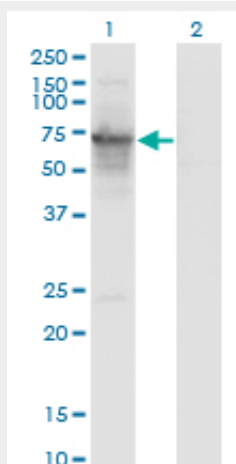
- [Western Blot](#)
- [Blocking Peptides](#)
- [Dot Blot](#)
- [Immunohistochemistry](#)

- [Immunofluorescence](#)
- [Immunoprecipitation](#)
- [Flow Cytometry](#)
- [Cell Culture](#)

PRC1 Antibody (monoclonal) (M01) - Images



Antibody Reactive Against Recombinant Protein. Western Blot detection against Immunogen (93.94 kDa) .



Western Blot analysis of PRC1 expression in transfected 293T cell line by PRC1 monoclonal antibody (M01), clone 3E3-1G1.

Lane 1: PRC1 transfected lysate (Predicted MW: 71.7 kDa).
Lane 2: Non-transfected lysate.

PRC1 Antibody (monoclonal) (M01) - Background

This gene encodes a protein that is involved in cytokinesis. The encoded protein is at high level during S and G2/M and drop dramatically after cell exit mitosis and enter G1. It is located in the nucleus during interphase, and becomes associated with mitotic spindles in a highly dynamic manner during mitosis, and localizes to the cell mid-body during cytokinesis. This protein has been shown to be a substrate of several cyclin-dependent kinases (CDKs). At least three alternatively spliced transcript variants encoding distinct isoforms have been observed.

PRC1 Antibody (monoclonal) (M01) - References

Insights into antiparallel microtubule crosslinking by PRC1, a conserved nonmotor microtubule binding protein. Subramanian R, et al. Cell, 2010 Aug 6. PMID 20691902. Personalized smoking cessation: interactions between nicotine dose, dependence and quit-success genotype score. Rose JE, et al. Mol Med, 2010 Jul-Aug. PMID 20379614. Association of mitotic regulation pathway polymorphisms with pancreatic cancer risk and outcome. Couch FJ, et al. Cancer Epidemiol Biomarkers Prev, 2010 Jan. PMID 20056645. A genome-wide association study of hypertension and blood pressure in African Americans. Adeyemo A, et al. PLoS Genet, 2009 Jul. PMID 19609347. PRC1 cooperates with CLASP1 to organize central spindle plasticity in mitosis. Liu J, et al. J Biol Chem, 2009 Aug 21. PMID 19561070.