

**PRSS7 Antibody (monoclonal) (M01)****Mouse monoclonal antibody raised against a partial recombinant PRSS7.****Catalog # AT3446a****Specification**

---

**PRSS7 Antibody (monoclonal) (M01) - Product Information**

Application	WB, E
Primary Accession	<a href="#">P98073</a>
Other Accession	<a href="#">NM_002772</a>
Reactivity	Human
Host	mouse
Clonality	Monoclonal
Isotype	IgG2a Kappa
Calculated MW	112935

**PRSS7 Antibody (monoclonal) (M01) - Additional Information****Gene ID** 5651**Other Names**

Enteropeptidase, Enterokinase, Serine protease 7, Transmembrane protease serine 15, Enteropeptidase non-catalytic heavy chain, Enteropeptidase catalytic light chain, TMPRSS15, ENTK, PRSS7

**Target/Specificity**

PRSS7 (NP\_002763, 361 a.a. ~ 470 a.a) partial recombinant protein with GST tag. MW of the GST tag alone is 26 KDa.

**Dilution**

WB~~1:500~1000

E~~N/A

**Format**

Clear, colorless solution in phosphate buffered saline, pH 7.2 .

**Storage**

Store at -20°C or lower. Aliquot to avoid repeated freezing and thawing.

**Precautions**

PRSS7 Antibody (monoclonal) (M01) is for research use only and not for use in diagnostic or therapeutic procedures.

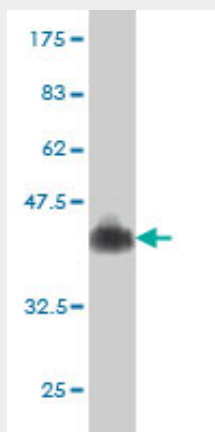
**PRSS7 Antibody (monoclonal) (M01) - Protocols**

Provided below are standard protocols that you may find useful for product applications.

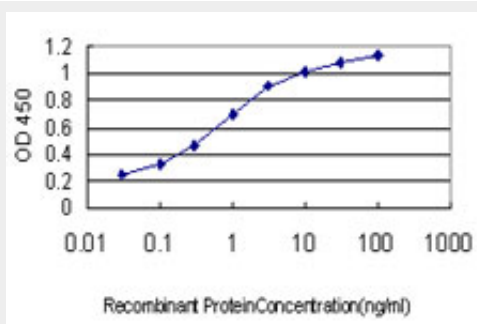
- [Western Blot](#)

- [Blocking Peptides](#)
- [Dot Blot](#)
- [Immunohistochemistry](#)
- [Immunofluorescence](#)
- [Immunoprecipitation](#)
- [Flow Cytometry](#)
- [Cell Culture](#)

## PRSS7 Antibody (monoclonal) (M01) - Images



Antibody Reactive Against Recombinant Protein. Western Blot detection against Immunogen (37.84 kDa) .



Detection limit for recombinant GST tagged PRSS7 is approximately 0.03ng/ml as a capture antibody.

## PRSS7 Antibody (monoclonal) (M01) - Background

This gene encodes an enzyme that converts the pancreatic proenzyme trypsinogen to trypsin, which activates other proenzymes including chymotrypsinogen and procarboxypeptidases. The precursor protein is cleaved into two chains that form a heterodimer linked by a disulfide bond. This protein is a member of the trypsin family of peptidases. Mutations in this gene cause enterokinase deficiency, a malabsorption disorder characterized by diarrhea and failure to thrive.

## PRSS7 Antibody (monoclonal) (M01) - References

Personalized smoking cessation: interactions between nicotine dose, dependence and quit-success genotype score. Rose JE, et al. Mol Med, 2010 Jul-Aug. PMID 20379614. Keratinocytes synthesize enteropeptidase and multiple forms of trypsinogen during terminal differentiation. Nakanishi J, et al. J Invest Dermatol, 2010 Apr. PMID 19924134. Intracellular co-localization of trypsin-2 and matrix metalloprotease-9: possible proteolytic cascade of trypsin-2, MMP-9 and enterokinase in carcinoma. Vilen ST, et al. Exp Cell Res, 2008 Feb 15. PMID 18062964. Diversification of transcriptional

modulation: large-scale identification and characterization of putative alternative promoters of human genes. Kimura K, et al. Genome Res, 2006 Jan. PMID 16344560. The status, quality, and expansion of the NIH full-length cDNA project: the Mammalian Gene Collection (MGC). Gerhard DS, et al. Genome Res, 2004 Oct. PMID 15489334.