

PSCD2 Antibody (monoclonal) (M02)

Mouse monoclonal antibody raised against a partial recombinant CYTH2.

Catalog # AT3450a

Specification

PSCD2 Antibody (monoclonal) (M02) - Product Information

Application	WB, IHC, IF, E
Primary Accession	O99418
Other Accession	NM_017457
Reactivity	Human, Rat
Host	mouse
Clonality	Monoclonal
Isotype	IgG2a Kappa
Calculated MW	46546

PSCD2 Antibody (monoclonal) (M02) - Additional Information

Gene ID 9266

Other Names

Cytohesin-2, ARF exchange factor, ARF nucleotide-binding site opener, Protein ARNO, PH, SEC7 and coiled-coil domain-containing protein 2, CYTH2, ARNO, PSCD2, PSCD2L

Target/Specificity

CYTH2 (NP_059431, 314 a.a. ~ 398 a.a) partial recombinant protein with GST tag. MW of the GST tag alone is 26 KDa.

Dilution

WB~~1:500~1000

IHC~~1:100~500

IF~~1:50~200

E~~N/A

Format

Clear, colorless solution in phosphate buffered saline, pH 7.2 .

Storage

Store at -20°C or lower. Aliquot to avoid repeated freezing and thawing.

Precautions

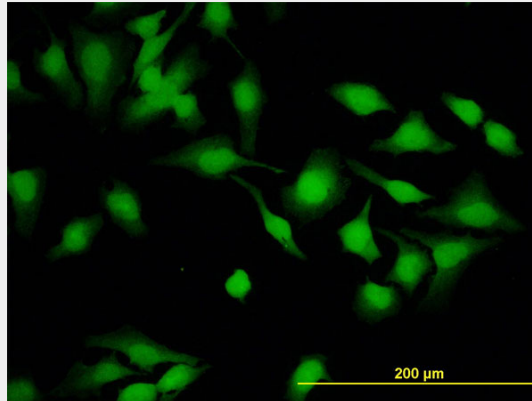
PSCD2 Antibody (monoclonal) (M02) is for research use only and not for use in diagnostic or therapeutic procedures.

PSCD2 Antibody (monoclonal) (M02) - Protocols

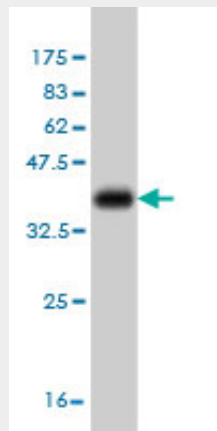
Provided below are standard protocols that you may find useful for product applications.

- [Western Blot](#)
- [Blocking Peptides](#)
- [Dot Blot](#)
- [Immunohistochemistry](#)
- [Immunofluorescence](#)
- [Immunoprecipitation](#)
- [Flow Cytometry](#)
- [Cell Culture](#)

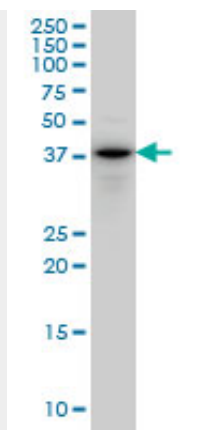
PSCD2 Antibody (monoclonal) (M02) - Images



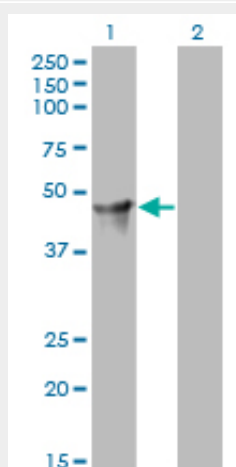
Immunofluorescence of monoclonal antibody to CYTH2 on HeLa cell. [antibody concentration 10 ug/ml]



Antibody Reactive Against Recombinant Protein. Western Blot detection against Immunogen (35.09 KDa) .



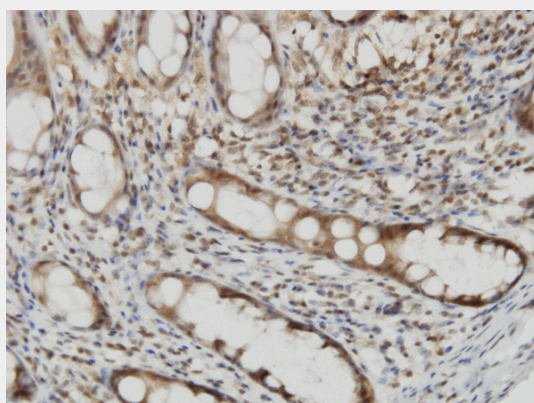
CYTH2 monoclonal antibody (M02), clone 6H5 Western Blot analysis of CYTH2 expression in PC-12 (Cat # AT3450a)



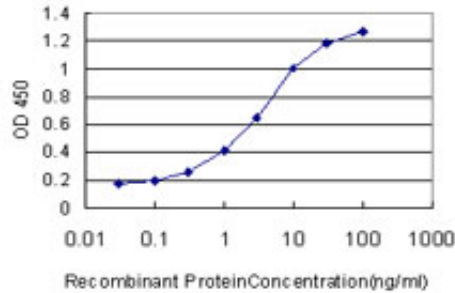
Western Blot analysis of CYTH2 expression in transfected 293T cell line by CYTH2 monoclonal antibody (M02), clone 6H5.

Lane 1: CYTH2 transfected lysate(46.5 KDa).

Lane 2: Non-transfected lysate.



Immunoperoxidase of monoclonal antibody to CYTH2 on formalin-fixed paraffin-embedded human colon. [antibody concentration 3 ug/ml]



Detection limit for recombinant GST tagged CYTH2 is approximately 0.03ng/ml as a capture antibody.

PSCD2 Antibody (monoclonal) (M02) - Background

The protein encoded by this gene is a member of the PSCD family. Members of this family have identical structural organization that consists of an N-terminal coiled-coil motif, a central Sec7 domain, and a C-terminal pleckstrin homology (PH) domain. The coiled-coil motif is involved in homodimerization, the Sec7 domain contains guanine-nucleotide exchange protein (GEP) activity, and the PH domain interacts with phospholipids and is responsible for association of PSCDs with membranes. Members of this family appear to mediate the regulation of protein sorting and membrane trafficking. The encoded protein exhibits GEP activity in vitro with ARF1, ARF3, and ARF6 and is 83% homologous to CYTH1. Two transcript variants encoding different isoforms have been found for this gene.

PSCD2 Antibody (monoclonal) (M02) - References

1. ARNO regulates VEGF-dependent tissue responses by stabilizing endothelial VEGFR-2 surface expression. Mannell HK, Pircher J, Chaudhry DI, Alig SK, Koch EG, Mettler R, Pohl U, Krotz F. Cardiovasc Res. 2011 Nov 7.