

PSCD3 Antibody (monoclonal) (M01)**Mouse monoclonal antibody raised against a full length recombinant PSCD3.****Catalog # AT3451a****Specification**

PSCD3 Antibody (monoclonal) (M01) - Product Information

Application	IF, WB, E
Primary Accession	O43739
Other Accession	BC008191
Reactivity	Human
Host	mouse
Clonality	Monoclonal
Isotype	IgG2b kappa
Calculated MW	46349

PSCD3 Antibody (monoclonal) (M01) - Additional Information**Gene ID** 9265**Other Names**

Cytohesin-3, ARF nucleotide-binding site opener 3, Protein ARNO3, General receptor of phosphoinositides 1, Grp1, PH, SEC7 and coiled-coil domain-containing protein 3, CYTH3, ARNO3, GRP1, PSCD3

Target/Specificity

PSCD3 (AAH08191, 1 a.a. ~ 180 a.a) full length recombinant protein with GST tag. MW of the GST tag alone is 26 KDa.

Dilution

WB~~1:500~1000

Format

Clear, colorless solution in phosphate buffered saline, pH 7.2 .

Storage

Store at -20°C or lower. Aliquot to avoid repeated freezing and thawing.

Precautions

PSCD3 Antibody (monoclonal) (M01) is for research use only and not for use in diagnostic or therapeutic procedures.

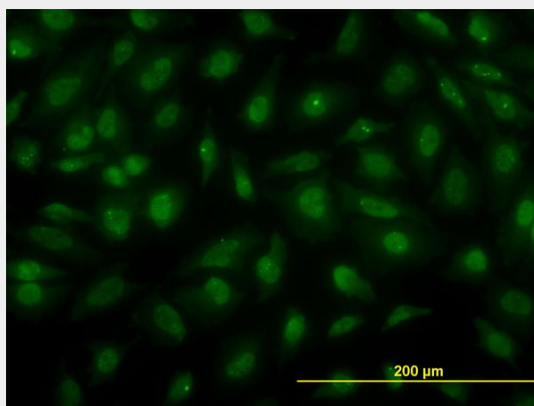
PSCD3 Antibody (monoclonal) (M01) - Protocols

Provided below are standard protocols that you may find useful for product applications.

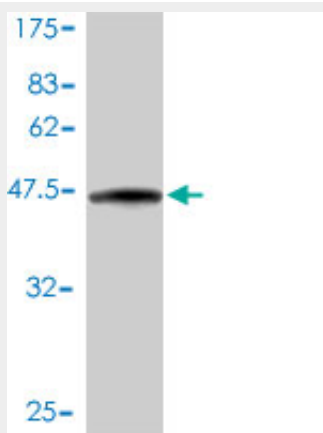
- [Western Blot](#)
- [Blocking Peptides](#)

- [Dot Blot](#)
- [Immunohistochemistry](#)
- [Immunofluorescence](#)
- [Immunoprecipitation](#)
- [Flow Cytometry](#)
- [Cell Culture](#)

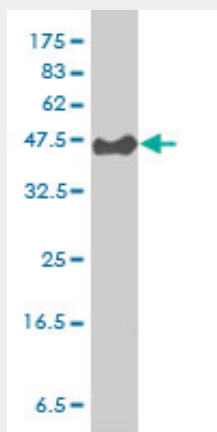
PSCD3 Antibody (monoclonal) (M01) - Images



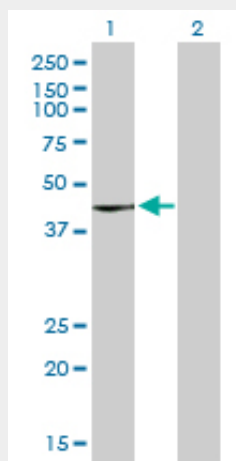
Immunofluorescence of monoclonal antibody to PSCD3 on HeLa cell. [antibody concentration 10 ug/ml]



Antibody Reactive Against Recombinant Protein. Western Blot detection against Immunogen (45.8 KDa) .



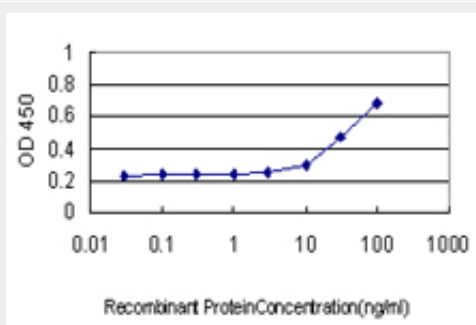
PSCD3 monoclonal antibody (M01), clone 6D3-1A9 Western Blot analysis of PSCD3 expression in Hela S3 NE ((Cat # AT3451a)



Western Blot analysis of PSCD3 expression in transfected 293T cell line by PSCD3 monoclonal antibody (M01), clone 6D3-1A9.

Lane 1: PSCD3 transfected lysate(46.3 kDa).

Lane 2: Non-transfected lysate.



Detection limit for recombinant GST tagged PSCD3 is approximately 3ng/ml as a capture antibody.

PSCD3 Antibody (monoclonal) (M01) - Background

This gene encodes a member of the PSCD (pleckstrin homology, Sec7 and coiled-coil domains) family. PSCD family members have identical structural organization that consists of an N-terminal coiled-coil motif, a central Sec7 domain, and a C-terminal pleckstrin homology (PH) domain. The coiled-coil motif is involved in homodimerization, the Sec7 domain contains guanine-nucleotide exchange protein (GEP) activity, and the PH domain interacts with phospholipids and is responsible for association of PSCDs with membranes. Members of this family appear to mediate the regulation of protein sorting and membrane trafficking. This encoded protein is involved in the control of Golgi structure and function, and it may have a physiological role in regulating ADP-ribosylation factor protein 6 (ARF) functions, in addition to acting on ARF1.

PSCD3 Antibody (monoclonal) (M01) - References

GEP100 links epidermal growth factor receptor signalling to Arf6 activation to induce breast cancer invasion. Morishige M, et al. Nat Cell Biol, 2008 Jan. PMID 18084281. Towards a proteome-scale map of the human protein-protein interaction network. Rual JF, et al. Nature, 2005 Oct 20. PMID 16189514. General receptor for phosphoinositides 1, a novel repressor of thyroid hormone receptor

action that prevents deoxyribonucleic acid binding. Poirier MB, et al. Mol Endocrinol, 2005 Aug. PMID 15878955. The status, quality, and expansion of the NIH full-length cDNA project: the Mammalian Gene Collection (MGC). Gerhard DS, et al. Genome Res, 2004 Oct. PMID 15489334. Complete sequencing and characterization of 21,243 full-length human cDNAs. Ota T, et al. Nat Genet, 2004 Jan. PMID 14702039.