

**PSMB10 Antibody (monoclonal) (M01)****Mouse monoclonal antibody raised against a full length recombinant PSMB10.****Catalog # AT3458a****Specification**

---

**PSMB10 Antibody (monoclonal) (M01) - Product Information**

Application	WB, IF, E
Primary Accession	<a href="#">P40306</a>
Other Accession	<a href="#">BC017198</a>
Reactivity	Human
Host	mouse
Clonality	Monoclonal
Isotype	IgG1 Kappa
Calculated MW	28936

**PSMB10 Antibody (monoclonal) (M01) - Additional Information****Gene ID** 5699**Other Names**

Proteasome subunit beta type-10, Low molecular mass protein 10, Macropain subunit MECL-1, Multicatalytic endopeptidase complex subunit MECL-1, Proteasome MECL-1, Proteasome subunit beta-2i, PSMB10, LMP10, MECL1

**Target/Specificity**

PSMB10 (AAH17198, 1 a.a. ~ 273 a.a) full-length recombinant protein with GST tag. MW of the GST tag alone is 26 KDa.

**Dilution**

WB~~1:500~1000

IF~~1:50~200

E~~N/A

**Format**

Clear, colorless solution in phosphate buffered saline, pH 7.2 .

**Storage**

Store at -20°C or lower. Aliquot to avoid repeated freezing and thawing.

**Precautions**

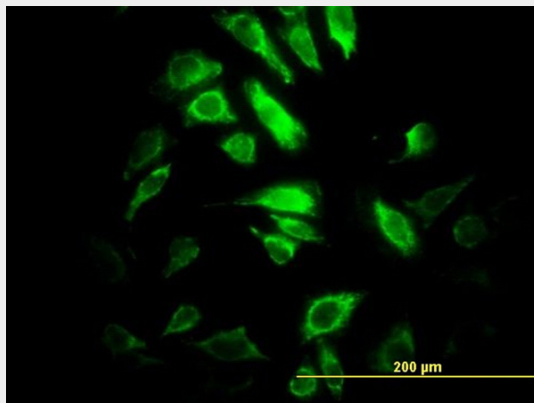
PSMB10 Antibody (monoclonal) (M01) is for research use only and not for use in diagnostic or therapeutic procedures.

**PSMB10 Antibody (monoclonal) (M01) - Protocols**

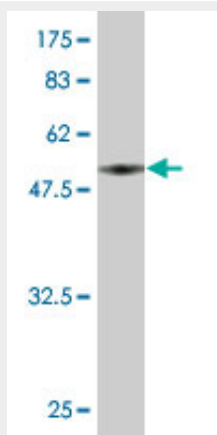
Provided below are standard protocols that you may find useful for product applications.

- [Western Blot](#)
- [Blocking Peptides](#)
- [Dot Blot](#)
- [Immunohistochemistry](#)
- [Immunofluorescence](#)
- [Immunoprecipitation](#)
- [Flow Cytometry](#)
- [Cell Culture](#)

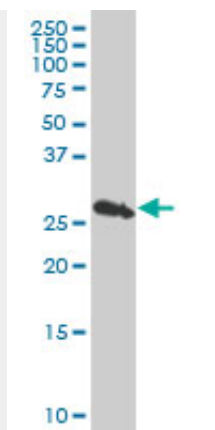
#### PSMB10 Antibody (monoclonal) (M01) - Images



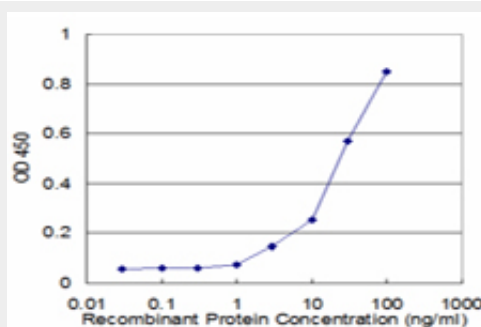
Immunofluorescence of monoclonal antibody to PSMB10 on HeLa cell. [antibody concentration 10 ug/ml]



Antibody Reactive Against Recombinant Protein. Western Blot detection against Immunogen (55.77 KDa) .



PSMB10 monoclonal antibody (M01), clone 3F8 Western Blot analysis of PSMB10 expression in Jurkat (Cat # AT3458a)



Detection limit for recombinant GST tagged PSMB10 is approximately 3ng/ml as a capture antibody.

### PSMB10 Antibody (monoclonal) (M01) - Background

The proteasome is a multicatalytic proteinase complex with a highly ordered ring-shaped 20S core structure. The core structure is composed of 4 rings of 28 non-identical subunits; 2 rings are composed of 7 alpha subunits and 2 rings are composed of 7 beta subunits. Proteasomes are distributed throughout eukaryotic cells at a high concentration and cleave peptides in an ATP/ubiquitin-dependent process in a non-lysosomal pathway. An essential function of a modified proteasome, the immunoproteasome, is the processing of class I MHC peptides. This gene encodes a member of the proteasome B-type family, also known as the T1B family, that is a 20S core beta subunit. Proteolytic processing is required to generate a mature subunit. Expression of this gene is induced by gamma interferon, and this gene product replaces catalytic subunit 2 (proteasome beta 7 subunit) in the immunoproteasome.

### PSMB10 Antibody (monoclonal) (M01) - References

1. Endoplasmic reticulum stress activates autophagy but not the proteasome in neuronal cells: implications for Alzheimer's disease. Nijholt DA, de Graaf TR, van Haastert ES, Oliveira AO, Berkers CR, Zwart R, Ovaas H, Baas F, Hoozemans JJ, Scheper W. Cell Death Differ. 2011 Jan 21. [Epub ahead of print]