

**PSMB4 Antibody (monoclonal) (M01)****Mouse monoclonal antibody raised against a full length recombinant PSMB4.****Catalog # AT3460a****Specification**

---

**PSMB4 Antibody (monoclonal) (M01) - Product Information**

Application	WB, IHC, E
Primary Accession	<a href="#">P28070</a>
Other Accession	<a href="#">BC000331</a>
Reactivity	Human
Host	mouse
Clonality	Monoclonal
Isotype	IgG1 kappa
Calculated MW	29204

**PSMB4 Antibody (monoclonal) (M01) - Additional Information****Gene ID** 5692**Other Names**

Proteasome subunit beta type-4, 26 kDa prosomal protein, HsBPROS26, PROS-26, Macropain beta chain, Multicatalytic endopeptidase complex beta chain, Proteasome beta chain, Proteasome chain 3, HsN3, PSMB4, PROS26

**Target/Specificity**

PSMB4 (AAH00331, 1 a.a. ~ 264 a.a) full-length recombinant protein with GST tag. MW of the GST tag alone is 26 KDa.

**Dilution**

WB~~1:500~1000

**Format**

Clear, colorless solution in phosphate buffered saline, pH 7.2 .

**Storage**

Store at -20°C or lower. Aliquot to avoid repeated freezing and thawing.

**Precautions**

PSMB4 Antibody (monoclonal) (M01) is for research use only and not for use in diagnostic or therapeutic procedures.

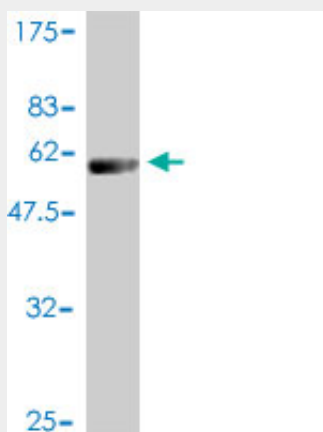
**PSMB4 Antibody (monoclonal) (M01) - Protocols**

Provided below are standard protocols that you may find useful for product applications.

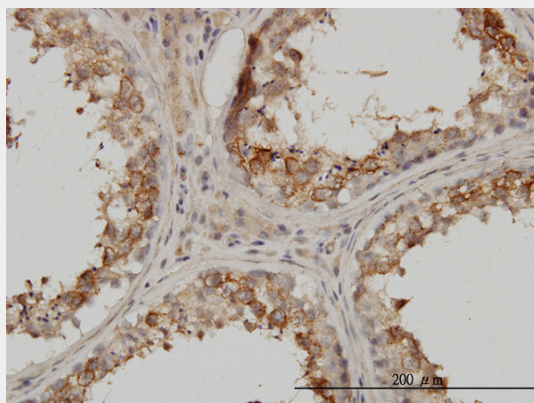
- [Western Blot](#)
- [Blocking Peptides](#)

- [Dot Blot](#)
- [Immunohistochemistry](#)
- [Immunofluorescence](#)
- [Immunoprecipitation](#)
- [Flow Cytometry](#)
- [Cell Culture](#)

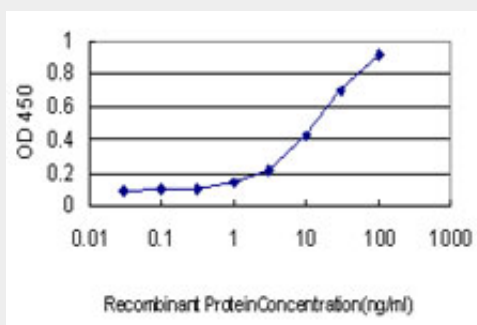
### PSMB4 Antibody (monoclonal) (M01) - Images



Antibody Reactive Against Recombinant Protein. Western Blot detection against Immunogen (54.78 kDa) .



Immunoperoxidase of monoclonal antibody to PSMB4 on formalin-fixed paraffin-embedded human testis. [antibody concentration 3 ug/ml]



Detection limit for recombinant GST tagged PSMB4 is approximately 0.3ng/ml as a capture antibody.

### PSMB4 Antibody (monoclonal) (M01) - Background

The proteasome is a multicatalytic proteinase complex with a highly ordered ring-shaped 20S core structure. The core structure is composed of 4 rings of 28 non-identical subunits; 2 rings are composed of 7 alpha subunits and 2 rings are composed of 7 beta subunits. Proteasomes are distributed throughout eukaryotic cells at a high concentration and cleave peptides in an ATP/ubiquitin-dependent process in a non-lysosomal pathway. An essential function of a modified proteasome, the immunoproteasome, is the processing of class I MHC peptides. This gene encodes a member of the proteasome B-type family, also known as the T1B family, that is a 20S core beta subunit. [provided by RefSeq]

#### **PSMB4 Antibody (monoclonal) (M01) - References**

1. Predictive value of PAK6 and PSMB4 expression in patients with localized prostate cancer treated with dose-escalation radiation therapy and androgen deprivation therapy. Zapatero A, Morente M, Nieto S, Mart?n de Vidales C, Lopez C, Adrados M, Arellano R, Artiga MJ, Garcia-Vicente F, Herranz LM, Leaman O. Urol Oncol. 2014 Jun 16. pii: S1078-1439(14)00167-7.