

**PSMB6 Antibody (monoclonal) (M02)****Mouse monoclonal antibody raised against a full length recombinant PSMB6.****Catalog # AT3462a****Specification**

---

**PSMB6 Antibody (monoclonal) (M02) - Product Information**

Application	WB, IHC, IF, E
Primary Accession	<a href="#">P28072</a>
Other Accession	<a href="#">BC000835</a>
Reactivity	Human
Host	mouse
Clonality	Monoclonal
Isotype	IgG2b Kappa
Calculated MW	25358

**PSMB6 Antibody (monoclonal) (M02) - Additional Information****Gene ID** 5694**Other Names**

Proteasome subunit beta type-6, Macropain delta chain, Multicatalytic endopeptidase complex delta chain, Proteasome delta chain, Proteasome subunit Y, PSMB6, LMPY, Y

**Target/Specificity**

PSMB6 (AAH00835, 1 a.a. ~ 239 a.a) full-length recombinant protein with GST tag. MW of the GST tag alone is 26 KDa.

**Dilution**WB~~1:500~1000  
IHC~~1:100~500  
IF~~1:50~200  
E~~N/A**Format**

Clear, colorless solution in phosphate buffered saline, pH 7.2 .

**Storage**

Store at -20°C or lower. Aliquot to avoid repeated freezing and thawing.

**Precautions**

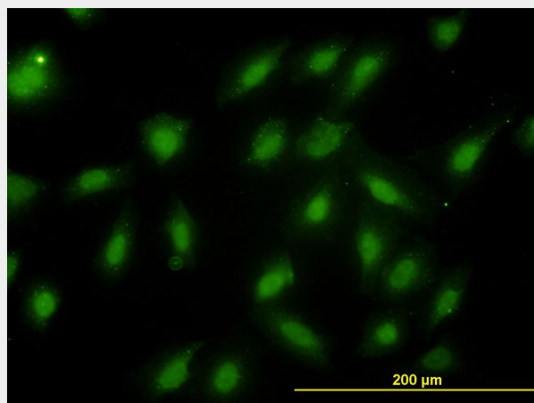
PSMB6 Antibody (monoclonal) (M02) is for research use only and not for use in diagnostic or therapeutic procedures.

**PSMB6 Antibody (monoclonal) (M02) - Protocols**

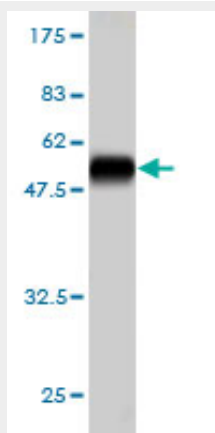
Provided below are standard protocols that you may find useful for product applications.

- [Western Blot](#)
- [Blocking Peptides](#)
- [Dot Blot](#)
- [Immunohistochemistry](#)
- [Immunofluorescence](#)
- [Immunoprecipitation](#)
- [Flow Cytometry](#)
- [Cell Culture](#)

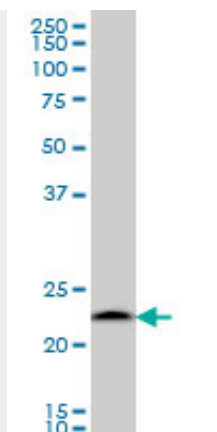
#### PSMB6 Antibody (monoclonal) (M02) - Images



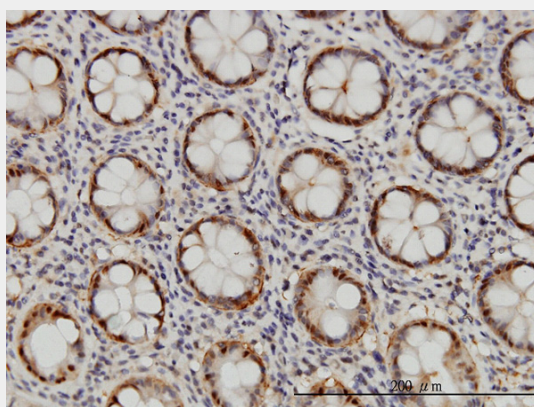
Immunofluorescence of monoclonal antibody to PSMB6 on HeLa cell. [antibody concentration 10 ug/ml]



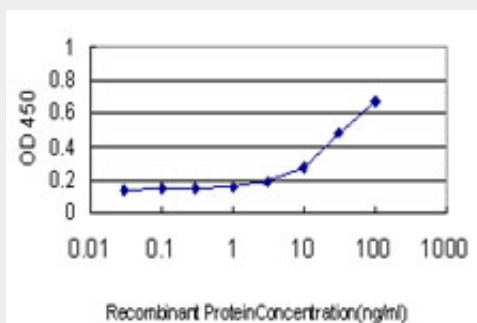
Antibody Reactive Against Recombinant Protein. Western Blot detection against Immunogen (52.03 KDa) .



PSMB6 monoclonal antibody (M02), clone S51 Western Blot analysis of PSMB6 expression in A-431 (Cat # AT3462a)



Immunoperoxidase of monoclonal antibody to PSMB6 on formalin-fixed paraffin-embedded human colon. [antibody concentration 1 ug/ml]



Detection limit for recombinant GST tagged PSMB6 is approximately 0.3ng/ml as a capture antibody.

### PSMB6 Antibody (monoclonal) (M02) - Background

The proteasome is a multicatalytic proteinase complex with a highly ordered ring-shaped 20S core structure. The core structure is composed of 4 rings of 28 non-identical subunits; 2 rings are composed of 7 alpha subunits and 2 rings are composed of 7 beta subunits. Proteasomes are distributed throughout eukaryotic cells at a high concentration and cleave peptides in an ATP/ubiquitin-dependent process in a non-lysosomal pathway. An essential function of a modified proteasome, the immunoproteasome, is the processing of class I MHC peptides. This gene encodes a member of the proteasome B-type family, also known as the T1B family, that is a 20S core beta subunit in the proteasome. This catalytic subunit is not present in the immunoproteasome and is replaced by catalytic subunit 1i (proteasome beta 9 subunit).

**PSMB6 Antibody (monoclonal) (M02) - References**

Defining the human deubiquitinating enzyme interaction landscape. Sowa ME, et al. Cell, 2009 Jul 23. PMID 19615732. A human protein-protein interaction network: a resource for annotating the proteome. Stelzl U, et al. Cell, 2005 Sep 23. PMID 16169070. The status, quality, and expansion of the NIH full-length cDNA project: the Mammalian Gene Collection (MGC). Gerhard DS, et al. Genome Res, 2004 Oct. PMID 15489334. Mammalian Cdh1/Fzr mediates its own degradation. Listovsky T, et al. EMBO J, 2004 Apr 7. PMID 15029244. Protein-protein interactions among human 20S proteasome subunits and proteasome assembly. Jayarapu K, et al. Biochem Biophys Res Commun, 2004 Feb 6. PMID 14733938.