

**PSMD7 Antibody (monoclonal) (M01)****Mouse monoclonal antibody raised against a full length recombinant PSMD7.****Catalog # AT3472a****Specification**

---

**PSMD7 Antibody (monoclonal) (M01) - Product Information**

Application	WB
Primary Accession	<a href="#">P51665</a>
Other Accession	<a href="#">BC012606</a>
Reactivity	Human
Host	mouse
Clonality	Monoclonal
Isotype	IgG1 kappa
Calculated MW	37025

**PSMD7 Antibody (monoclonal) (M01) - Additional Information****Gene ID** 5713**Other Names**

26S proteasome non-ATPase regulatory subunit 7, 26S proteasome regulatory subunit RPN8, 26S proteasome regulatory subunit S12, Mov34 protein homolog, Proteasome subunit p40, PSMD7, MOV34L

**Target/Specificity**

PSMD7 (AAH12606, 1 a.a. ~ 324 a.a) full-length recombinant protein with GST tag. MW of the GST tag alone is 26 KDa.

**Dilution**

WB~~1:500~1000

**Format**

Clear, colorless solution in phosphate buffered saline, pH 7.2 .

**Storage**

Store at -20°C or lower. Aliquot to avoid repeated freezing and thawing.

**Precautions**

PSMD7 Antibody (monoclonal) (M01) is for research use only and not for use in diagnostic or therapeutic procedures.

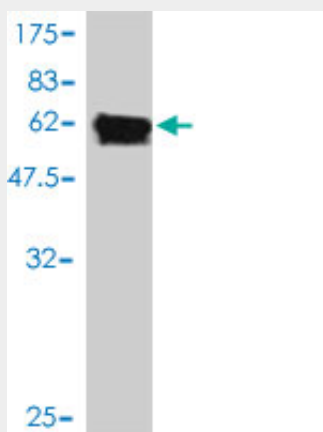
**PSMD7 Antibody (monoclonal) (M01) - Protocols**

Provided below are standard protocols that you may find useful for product applications.

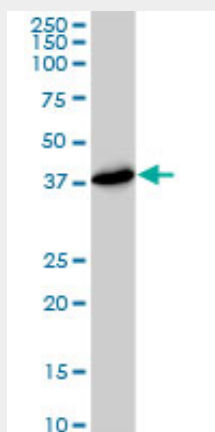
- [Western Blot](#)
- [Blocking Peptides](#)

- [Dot Blot](#)
- [Immunohistochemistry](#)
- [Immunofluorescence](#)
- [Immunoprecipitation](#)
- [Flow Cytometry](#)
- [Cell Culture](#)

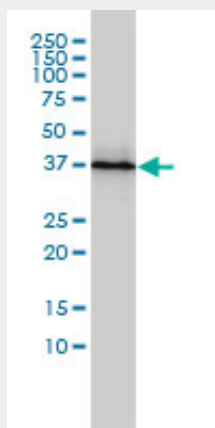
### PSMD7 Antibody (monoclonal) (M01) - Images



Antibody Reactive Against Recombinant Protein. Western Blot detection against Immunogen (61.38 kDa) .



PSMD7 monoclonal antibody (M01), clone 2G5. Western Blot analysis of PSMD7 expression in HeLa S3 NE ( (Cat # AT3472a )



PSMD7 monoclonal antibody (M01), clone 2G5 Western Blot analysis of PSMD7 expression in Jurkat (Cat # AT3472a)

### **PSMD7 Antibody (monoclonal) (M01) - Background**

The 26S proteasome is a multicatalytic proteinase complex with a highly ordered structure composed of 2 complexes, a 20S core and a 19S regulator. The 20S core is composed of 4 rings of 28 non-identical subunits; 2 rings are composed of 7 alpha subunits and 2 rings are composed of 7 beta subunits. The 19S regulator is composed of a base, which contains 6 ATPase subunits and 2 non-ATPase subunits, and a lid, which contains up to 10 non-ATPase subunits. Proteasomes are distributed throughout eukaryotic cells at a high concentration and cleave peptides in an ATP/ubiquitin-dependent process in a non-lysosomal pathway. An essential function of a modified proteasome, the immunoproteasome, is the processing of class I MHC peptides. This gene encodes a non-ATPase subunit of the 19S regulator. A pseudogene has been identified on chromosome 17.

### **PSMD7 Antibody (monoclonal) (M01) - References**

A polymorphism rs17336700 in the PSMD7 gene is associated with ankylosing spondylitis in Chinese subjects. Niu Z, et al. Ann Rheum Dis, 2010 Jul 19. PMID 20643764. Fine mapping and association studies of a high-density lipoprotein cholesterol linkage region on chromosome 16 in French-Canadian subjects. Dastani Z, et al. Eur J Hum Genet, 2010 Mar. PMID 19844255. Defining the human deubiquitinating enzyme interaction landscape. Sowa ME, et al. Cell, 2009 Jul 23. PMID 19615732. The crystal structure of the human Mov34 MPN domain reveals a metal-free dimer. Sanches M, et al. J Mol Biol, 2007 Jul 27. PMID 17559875. Large-scale mapping of human protein-protein interactions by mass spectrometry. Ewing RM, et al. Mol Syst Biol, 2007. PMID 17353931.