

PSMD9 Antibody (monoclonal) (M01)**Mouse monoclonal antibody raised against a full length recombinant PSMD9.****Catalog # AT3473a****Specification**

PSMD9 Antibody (monoclonal) (M01) - Product Information

Application	WB, E
Primary Accession	O00233
Other Accession	BC002383
Reactivity	Human
Host	mouse
Clonality	Monoclonal
Isotype	IgG1 Kappa
Calculated MW	24682

PSMD9 Antibody (monoclonal) (M01) - Additional Information**Gene ID** 5715**Other Names**

26S proteasome non-ATPase regulatory subunit 9, 26S proteasome regulatory subunit p27, PSMD9

Target/Specificity

PSMD9 (AAH02383, 1 a.a. ~ 223 a.a) full-length recombinant protein with GST tag. MW of the GST tag alone is 26 KDa.

Dilution

WB~~1:500~1000

E~~N/A

Format

Clear, colorless solution in phosphate buffered saline, pH 7.2 .

Storage

Store at -20°C or lower. Aliquot to avoid repeated freezing and thawing.

Precautions

PSMD9 Antibody (monoclonal) (M01) is for research use only and not for use in diagnostic or therapeutic procedures.

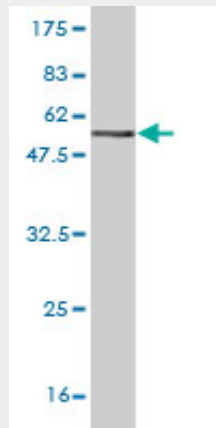
PSMD9 Antibody (monoclonal) (M01) - Protocols

Provided below are standard protocols that you may find useful for product applications.

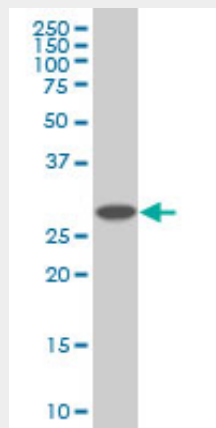
- [Western Blot](#)
- [Blocking Peptides](#)
- [Dot Blot](#)

- [Immunohistochemistry](#)
- [Immunofluorescence](#)
- [Immunoprecipitation](#)
- [Flow Cytometry](#)
- [Cell Culture](#)

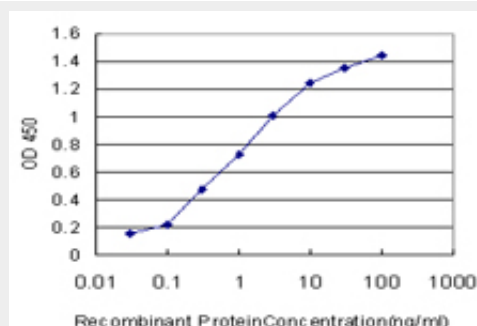
PSMD9 Antibody (monoclonal) (M01) - Images



Antibody Reactive Against Recombinant Protein. Western Blot detection against Immunogen (50.27 KDa) .



PSMD9 monoclonal antibody (M01), clone 3A4 Western Blot analysis of PSMD9 expression in HepG2 (Cat # AT3473a)



Detection limit for recombinant GST tagged PSMD9 is approximately 0.03ng/ml as a capture antibody.

PSMD9 Antibody (monoclonal) (M01) - Background

The 26S proteasome is a multicatalytic proteinase complex with a highly ordered structure composed of 2 complexes, a 20S core and a 19S regulator. The 20S core is composed of 4 rings of 28 non-identical subunits; 2 rings are composed of 7 alpha subunits and 2 rings are composed of 7 beta subunits. The 19S regulator is composed of a base, which contains 6 ATPase subunits and 2 non-ATPase subunits, and a lid, which contains up to 10 non-ATPase subunits. Proteasomes are distributed throughout eukaryotic cells at a high concentration and cleave peptides in an ATP/ubiquitin-dependent process in a non-lysosomal pathway. An essential function of a modified proteasome, the immunoproteasome, is the processing of class I MHC peptides. This gene encodes a non-ATPase subunit of the 19S regulator.

PSMD9 Antibody (monoclonal) (M01) - References

PSMD9 is linked to MODY3. Gragnoli C. J Cell Physiol, 2010 Apr. PMID 20069546. PSMD9 gene in the NIDDM2 locus is linked to type 2 diabetes in Italians. Gragnoli C. J Cell Physiol, 2010 Feb. PMID 19877155. Decreased p21 expression in HPV-18 positive cervical carcinomas. Huang LW, et al. Pathol Oncol Res, 2010 Mar. PMID 19657726. Assembly pathway of the Mammalian proteasome base subcomplex is mediated by multiple specific chaperones. Kaneko T, et al. Cell, 2009 May 29. PMID 19490896. Cytoplasmic sequestration of p27 via AKT phosphorylation in renal cell carcinoma. Kim J, et al. Clin Cancer Res, 2009 Jan 1. PMID 19118035.