

**PTBP2 Antibody (monoclonal) (M01)****Mouse monoclonal antibody raised against a full length recombinant PTBP2.****Catalog # AT3479a****Specification**

---

**PTBP2 Antibody (monoclonal) (M01) - Product Information**

Application	WB
Primary Accession	<a href="#">O9UKA9</a>
Other Accession	<a href="#">BC016582</a>
Reactivity	Human
Host	Mouse
Clonality	Monoclonal
Isotype	IgG1 Kappa
Calculated MW	57491

**PTBP2 Antibody (monoclonal) (M01) - Additional Information****Gene ID** 58155**Other Names**

Polypyrimidine tract-binding protein 2, Neural polypyrimidine tract-binding protein, Neurally-enriched homolog of PTB, PTB-like protein, PTBP2, NPTB, PTB, PTBLP

**Target/Specificity**

PTBP2 (AAH16582, 1 a.a. ~ 532 a.a) full-length recombinant protein with GST tag. MW of the GST tag alone is 26 KDa.

**Dilution**

WB~~1:500~1000

**Format**

Clear, colorless solution in phosphate buffered saline, pH 7.2 .

**Storage**

Store at -20°C or lower. Aliquot to avoid repeated freezing and thawing.

**Precautions**

PTBP2 Antibody (monoclonal) (M01) is for research use only and not for use in diagnostic or therapeutic procedures.

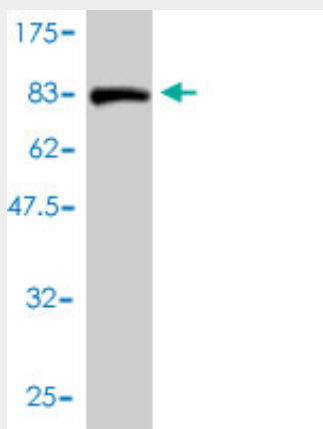
**PTBP2 Antibody (monoclonal) (M01) - Protocols**

Provided below are standard protocols that you may find useful for product applications.

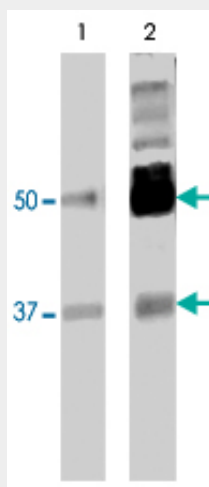
- [Western Blot](#)
- [Blocking Peptides](#)
- [Dot Blot](#)

- [Immunohistochemistry](#)
- [Immunofluorescence](#)
- [Immunoprecipitation](#)
- [Flow Cytometry](#)
- [Cell Culture](#)

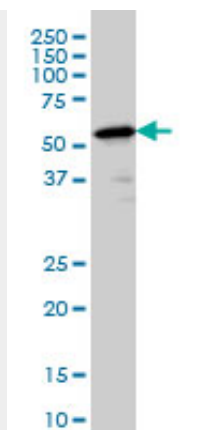
#### PTBP2 Antibody (monoclonal) (M01) - Images



Antibody Reactive Against Recombinant Protein. Western Blot detection against Immunogen (84.26 kDa) .



PTBP2 monoclonal antibody (M01), clone 2D10-B2. Western Blot analysis of PTBP2 expression in human brain membrane (lane 1) and human brain cortex (lane 2).



PTBP2 monoclonal antibody (M01), clone 2D10-B2 Western Blot analysis of PTBP2 expression in IMR-32 (Cat # AT3479a)

#### **PTBP2 Antibody (monoclonal) (M01) - Background**

The protein encoded by this gene binds to the intronic cluster of RNA regulatory elements, downstream control sequence (DCS). It is implicated in controlling the assembly of other splicing-regulatory proteins. This protein is very similar to the polypyrimidine tract binding protein but it is expressed primarily in the brain.

#### **PTBP2 Antibody (monoclonal) (M01) - References**

1.Genome-wide analysis of PTB-RNA interactions reveals a strategy used by the general splicing repressor to modulate exon inclusion or skipping.Xue Y, Zhou Y, Wu T, Zhu T, Ji X, Kwon YS, Zhang C, Yeo G, Black DL, Sun H, Fu XD, Zhang Y.Mol Cell. 2009 Dec 25;36(6):996-1006.