

**PTHLH Antibody (monoclonal) (M01)**

Mouse monoclonal antibody raised against a full length recombinant PTHLH.

Catalog # AT3487a

**Specification**

---

**PTHLH Antibody (monoclonal) (M01) - Product Information**

Application	IF, WB, IHC, E
Primary Accession	<a href="#">P12272</a>
Other Accession	<a href="#">BC005961</a>
Reactivity	Human
Host	mouse
Clonality	Monoclonal
Isotype	IgG2b kappa
Calculated MW	20194

**PTHLH Antibody (monoclonal) (M01) - Additional Information**

**Gene ID** 5744

**Other Names**

Parathyroid hormone-related protein, PTH-rP, PTHrP, Parathyroid hormone-like protein, PLP, PTHrP[1-36], PTHrP[38-94], Osteostatin, PTHrP[107-139], PTHLH, PTHRP

**Target/Specificity**

PTHLH (AAH05961, 1 a.a. ~ 175 a.a) full-length recombinant protein with GST tag. MW of the GST tag alone is 26 KDa.

**Dilution**

WB~~1:500~1000

**Format**

Clear, colorless solution in phosphate buffered saline, pH 7.2 .

**Storage**

Store at -20°C or lower. Aliquot to avoid repeated freezing and thawing.

**Precautions**

PTHLH Antibody (monoclonal) (M01) is for research use only and not for use in diagnostic or therapeutic procedures.

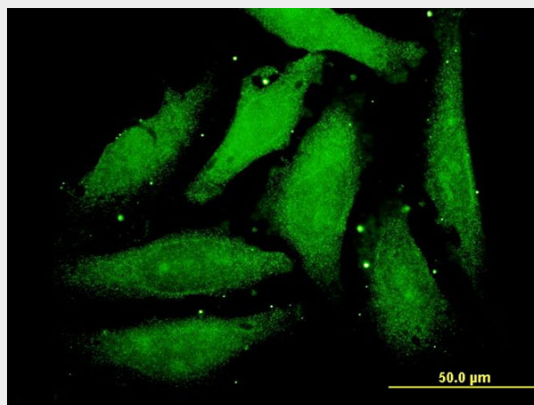
**PTHLH Antibody (monoclonal) (M01) - Protocols**

Provided below are standard protocols that you may find useful for product applications.

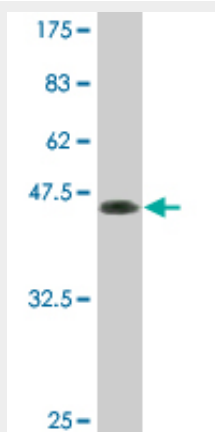
- [Western Blot](#)
- [Blocking Peptides](#)
- [Dot Blot](#)

- [Immunohistochemistry](#)
- [Immunofluorescence](#)
- [Immunoprecipitation](#)
- [Flow Cytometry](#)
- [Cell Culture](#)

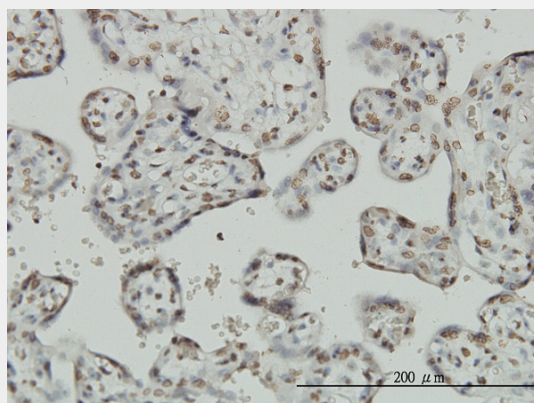
## PTHLH Antibody (monoclonal) (M01) - Images



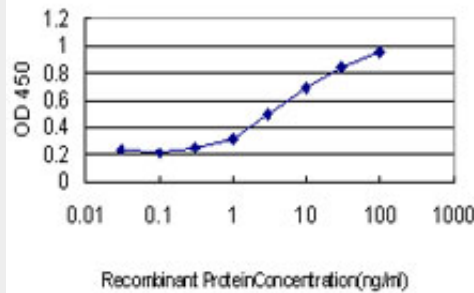
Immunofluorescence of monoclonal antibody to PTHLH on HeLa cell . [antibody concentration 10 ug/ml]



Antibody Reactive Against Recombinant Protein. Western Blot detection against Immunogen (44.99 KDa) .



Immunoperoxidase of monoclonal antibody to PTHLH on formalin-fixed paraffin-embedded human placenta. [antibody concentration 3 ug/ml]



Detection limit for recombinant GST tagged PTHLH is approximately 0.3ng/ml as a capture antibody.

### **PTHLH Antibody (monoclonal) (M01) - Background**

The protein encoded by this gene is a member of the parathyroid hormone family. This hormone regulates endochondral bone development and epithelial-mesenchymal interactions during the formation of the mammary glands and teeth. This hormone is involved in lactation possibly by regulating the mobilization and transfer of calcium to the milk. The receptor of this hormone, PTHR1, is responsible for most cases of humoral hypercalcemia of malignancy. Four alternatively spliced transcript variants encoding two distinct isoforms have been observed. There is also evidence for alternative translation initiation from non-AUG (CUG and GUG) start sites, in-frame and downstream of the initiator AUG codon, to give rise to nuclear forms of this hormone.

### **PTHLH Antibody (monoclonal) (M01) - References**

1. The Expression of PTHLH in Human Gastric Mucosa Enterochromaffin-Like Cells. Liu C, Chen J, Guo Y, Yang L, Zhao C, Bai L. Dig Dis Sci. 2010 Sep 16. [Epub ahead of print]