

**PTPN22 Antibody (monoclonal) (M01)****Mouse monoclonal antibody raised against a full length recombinant PTPN22.****Catalog # AT3493a****Specification**

---

**PTPN22 Antibody (monoclonal) (M01) - Product Information**

Application	WB, E
Primary Accession	<a href="#">O9Y2R2</a>
Other Accession	<a href="#">BC017785</a>
Reactivity	Human
Host	mouse
Clonality	Monoclonal
Isotype	IgG2a Kappa
Calculated MW	91705

**PTPN22 Antibody (monoclonal) (M01) - Additional Information****Gene ID** 26191**Other Names**

Tyrosine-protein phosphatase non-receptor type 22, Hematopoietic cell protein-tyrosine phosphatase 70Z-PEP, Lymphoid phosphatase, LyP, PEST-domain phosphatase, PEP, PTPN22, PTPN8

**Target/Specificity**

PTPN22 (AAH17785, 1 a.a. ~ 179 a.a) full-length recombinant protein with GST tag. MW of the GST tag alone is 26 KDa.

**Dilution**

WB~~1:500~1000

E~~N/A

**Format**

Clear, colorless solution in phosphate buffered saline, pH 7.2 .

**Storage**

Store at -20°C or lower. Aliquot to avoid repeated freezing and thawing.

**Precautions**

PTPN22 Antibody (monoclonal) (M01) is for research use only and not for use in diagnostic or therapeutic procedures.

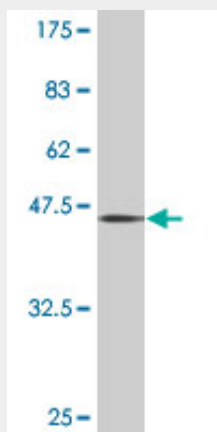
**PTPN22 Antibody (monoclonal) (M01) - Protocols**

Provided below are standard protocols that you may find useful for product applications.

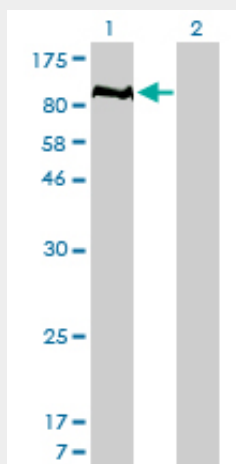
- [Western Blot](#)

- [Blocking Peptides](#)
- [Dot Blot](#)
- [Immunohistochemistry](#)
- [Immunofluorescence](#)
- [Immunoprecipitation](#)
- [Flow Cytometry](#)
- [Cell Culture](#)

## PTPN22 Antibody (monoclonal) (M01) - Images



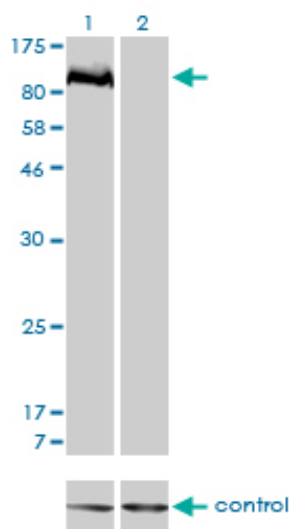
Antibody Reactive Against Recombinant Protein. Western Blot detection against Immunogen (45.43 KDa) .



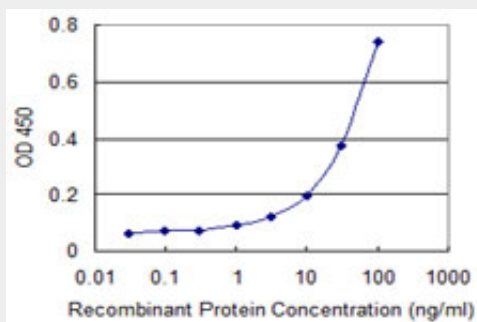
Western Blot analysis of PTPN22 expression in transfected 293T cell line by PTPN22 monoclonal antibody (M01), clone 4F6.

Lane 1: PTPN22 transfected lysate (85.1 KDa).

Lane 2: Non-transfected lysate.



Western blot analysis of PTPN22 over-expressed 293 cell line, cotransfected with PTPN22 Validated Chimera RNAi (Cat # AT3493a)



Detection limit for recombinant GST tagged PTPN22 is 1 ng/ml as a capture antibody.

### PTPN22 Antibody (monoclonal) (M01) - Background

This gene encodes of member of the non-receptor class 4 subfamily of the protein-tyrosine phosphatase family. The encoded protein is a lymphoid-specific intracellular phosphatase that associates with the molecular adapter protein CBL and may be involved in regulating CBL function in the T-cell receptor signaling pathway. Mutations in this gene may be associated with a range of autoimmune disorders including Type 1 Diabetes, rheumatoid arthritis, systemic lupus erythematosus and Graves' disease. Alternatively spliced transcript variants encoding distinct isoforms have been described.

### PTPN22 Antibody (monoclonal) (M01) - References

Latent autoimmune diabetes in adults differs genetically from classical type 1 diabetes diagnosed after the age of 35 years. Andersen MK, et al. Diabetes Care, 2010 Sep. PMID 20805278. Functional polymorphisms of PTPN22 and FcγR genes in Tunisian patients with rheumatoid arthritis. Sfar I, et al. Arch Inst Pasteur Tunis, 2009. PMID 20707220. PTPN22 polymorphism is related to autoimmune disease risk in patients with Turner syndrome. Bianco B, et al. Scand J Immunol, 2010 Sep. PMID 20696024. Variation at the NFATC2 Locus Increases the Risk of Thiazolidinedione-Induced Edema in the Diabetes REduction Assessment with ramipril and rosiglitazone Medication (DREAM) Study. Bailey SD, et al. Diabetes Care, 2010 Jul 13. PMID 20628086. Association of the protein tyrosine phosphatase nonreceptor 22 haplotypes with autoimmune thyroid disease in the Japanese population. Ban Y, et al. Thyroid, 2010 Aug. PMID 20615141.