

**RAP1A Antibody (monoclonal) (M01)****Mouse monoclonal antibody raised against a full length recombinant RAP1A.****Catalog # AT3562a****Specification**

---

**RAP1A Antibody (monoclonal) (M01) - Product Information**

Application	WB, E
Primary Accession	<a href="#">P62834</a>
Other Accession	<a href="#">BC014086</a>
Reactivity	Human
Host	mouse
Clonality	Monoclonal
Isotype	IgG2a Kappa
Calculated MW	20987

**RAP1A Antibody (monoclonal) (M01) - Additional Information****Gene ID** 5906**Other Names**

Ras-related protein Rap-1A, C21KG, G-22K, GTP-binding protein smg p21A, Ras-related protein Krev-1, RAP1A, KREV1

**Target/Specificity**

RAP1A (AAH14086.1, 1 a.a. ~ 184 a.a) full-length recombinant protein with GST tag. MW of the GST tag alone is 26 KDa.

**Dilution**

WB~~1:500~1000

**Format**

Clear, colorless solution in phosphate buffered saline, pH 7.2 .

**Storage**

Store at -20°C or lower. Aliquot to avoid repeated freezing and thawing.

**Precautions**

RAP1A Antibody (monoclonal) (M01) is for research use only and not for use in diagnostic or therapeutic procedures.

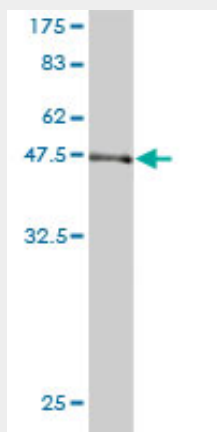
**RAP1A Antibody (monoclonal) (M01) - Protocols**

Provided below are standard protocols that you may find useful for product applications.

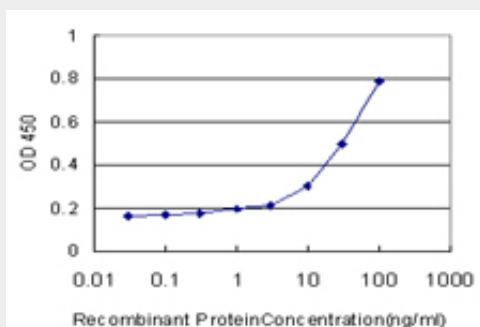
- [Western Blot](#)
- [Blocking Peptides](#)
- [Dot Blot](#)

- [Immunohistochemistry](#)
- [Immunofluorescence](#)
- [Immunoprecipitation](#)
- [Flow Cytometry](#)
- [Cell Culture](#)

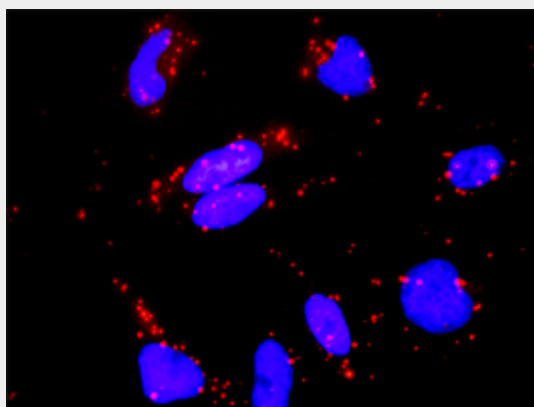
#### **RAP1A Antibody (monoclonal) (M01) - Images**



Antibody Reactive Against Recombinant Protein. Western Blot detection against Immunogen (45.98 KDa) .



Detection limit for recombinant GST tagged RAP1A is approximately 1ng/ml as a capture antibody.



Proximity Ligation Analysis of protein-protein interactions between RASGRP4 and RAP1A HeLa cells were stained with anti-RASGRP4 rabbit purified polyclonal 1:1200 and anti-RAP1A mouse monoclonal antibody 1:50. Each red dot represents the detection of protein-protein interaction complex, and nuclei were counterstained with DAPI (blue).

**RAP1A Antibody (monoclonal) (M01) - Background**

The product of this gene belongs to the family of RAS-related proteins. These proteins share approximately 50% amino acid identity with the classical RAS proteins and have numerous structural features in common. The most striking difference between RAP proteins and RAS proteins resides in their 61st amino acid: glutamine in RAS is replaced by threonine in RAP proteins. The product of this gene counteracts the mitogenic function of RAS because it can interact with RAS GAPs and RAF in a competitive manner. Two transcript variants encoding the same protein have been identified for this gene.

**RAP1A Antibody (monoclonal) (M01) - References**

1. Overexpression of Rap-1A Indicates a Poor Prognosis for Oral Cavity Squamous Cell Carcinoma and Promotes Tumor Cell Invasion via Aurora-A Modulation. Chen CH, Chuang HC, Huang CC, Fang FM, Huang HY, Tasi HT, Su LJ, Shiu LY, Leu S, Chien CY. *Am J Pathol.* 2012 Dec 3. pii: S0002-9440(12)00817-6. doi: 10.1016/j.ajpath.2012.10.023. [Epub ahead of print]