

**RAPGEF1 Antibody (monoclonal) (M01)****Mouse monoclonal antibody raised against a partial recombinant RAPGEF1.****Catalog # AT3565a****Specification**

---

**RAPGEF1 Antibody (monoclonal) (M01) - Product Information**

|                   |                          |
|-------------------|--------------------------|
| Application       | WB, E                    |
| Primary Accession | <a href="#">Q13905</a>   |
| Other Accession   | <a href="#">BC041710</a> |
| Reactivity        | Human                    |
| Host              | mouse                    |
| Clonality         | Monoclonal               |
| Isotype           | IgG2a Kappa              |
| Calculated MW     | 120548                   |

**RAPGEF1 Antibody (monoclonal) (M01) - Additional Information****Gene ID** 2889**Other Names**

Rap guanine nucleotide exchange factor 1, CRK SH3-binding GNRP, Guanine nucleotide-releasing factor 2, Protein C3G, RAPGEF1, GRF2

**Target/Specificity**

RAPGEF1 (AAH41710, 1 a.a. ~ 110 a.a) partial recombinant protein with GST tag. MW of the GST tag alone is 26 KDa.

**Dilution**

WB~~1:500~1000

E~~N/A

**Format**

Clear, colorless solution in phosphate buffered saline, pH 7.2 .

**Storage**

Store at -20°C or lower. Aliquot to avoid repeated freezing and thawing.

**Precautions**

RAPGEF1 Antibody (monoclonal) (M01) is for research use only and not for use in diagnostic or therapeutic procedures.

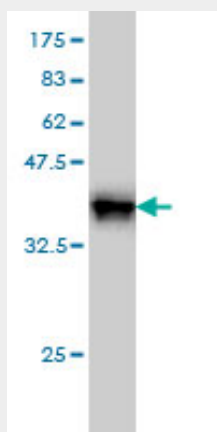
**RAPGEF1 Antibody (monoclonal) (M01) - Protocols**

Provided below are standard protocols that you may find useful for product applications.

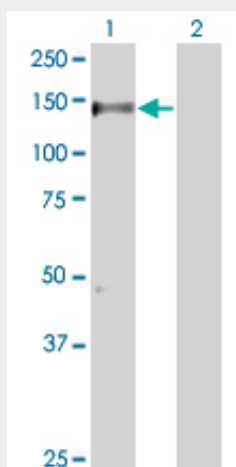
- [Western Blot](#)
- [Blocking Peptides](#)

- [Dot Blot](#)
- [Immunohistochemistry](#)
- [Immunofluorescence](#)
- [Immunoprecipitation](#)
- [Flow Cytometry](#)
- [Cell Culture](#)

#### **RAPGEF1 Antibody (monoclonal) (M01) - Images**



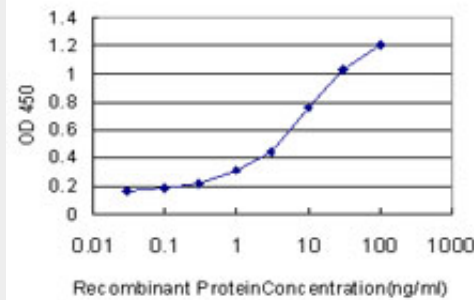
Antibody Reactive Against Recombinant Protein. Western Blot detection against Immunogen (37.73 KDa) .



Western Blot analysis of RAPGEF1 expression in transfected 293T cell line by RAPGEF1 monoclonal antibody (M01), clone 3D10.

Lane 1: RAPGEF1 transfected lysate (122.7 KDa).

Lane 2: Non-transfected lysate.



Detection limit for recombinant GST tagged RAPGEF1 is approximately 0.1ng/ml as a capture antibody.

### **RAPGEF1 Antibody (monoclonal) (M01) - Background**

This gene encodes a human guanine nucleotide exchange factor. It transduces signals from CRK by binding the SH3 domain of CRK, and activating several members of the Ras family of GTPases. This signaling cascade that may be involved in apoptosis, integrin-mediated signal transduction, and cell transformation. Several alternatively spliced transcript variants of this gene have been described, but the full-length nature of some variants has not been determined.

### **RAPGEF1 Antibody (monoclonal) (M01) - References**

1.The WAVE2 complex regulates T cell receptor signaling to integrins via Abl- and CrkL-C3G-mediated activation of Rap1. Nolz JC, Nacusi LP, Segovis CM, Medeiros RB, Mitchell JS, Shimizu Y, Billadeau DD. J Cell Biol. 2008 Sep 22;182(6):1231-44.