

RBMS1 Antibody (monoclonal) (M02)**Mouse monoclonal antibody raised against a full length recombinant RBMS1.****Catalog # AT3596a****Specification**

RBMS1 Antibody (monoclonal) (M02) - Product Information

Application	WB
Primary Accession	P29558
Other Accession	BC012993
Reactivity	Human
Host	mouse
Clonality	Monoclonal
Isotype	IgG1 Kappa
Calculated MW	44505

RBMS1 Antibody (monoclonal) (M02) - Additional Information**Gene ID** 5937**Other Names**RNA-binding motif, single-stranded-interacting protein 1, Single-stranded DNA-binding protein
MSSP-1, Suppressor of CDC2 with RNA-binding motif 2, RBMS1, C2orf12, MSSP, MSSP1, SCR2**Target/Specificity**

RBMS1 (AAH12993, 1 a.a. ~ 403 a.a) full-length recombinant protein with GST tag. MW of the GST tag alone is 26 KDa.

Dilution

WB~~1:500~1000

Format

Clear, colorless solution in phosphate buffered saline, pH 7.2 .

Storage

Store at -20°C or lower. Aliquot to avoid repeated freezing and thawing.

Precautions

RBMS1 Antibody (monoclonal) (M02) is for research use only and not for use in diagnostic or therapeutic procedures.

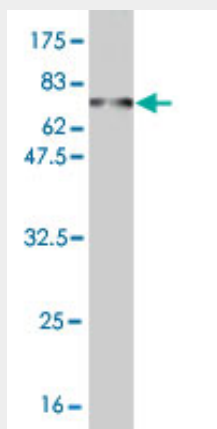
RBMS1 Antibody (monoclonal) (M02) - Protocols

Provided below are standard protocols that you may find useful for product applications.

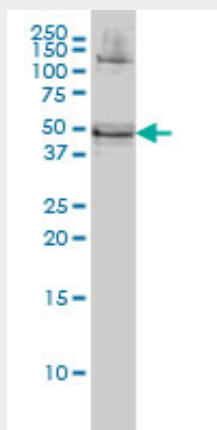
- [Western Blot](#)
- [Blocking Peptides](#)
- [Dot Blot](#)

- [Immunohistochemistry](#)
- [Immunofluorescence](#)
- [Immunoprecipitation](#)
- [Flow Cytometry](#)
- [Cell Culture](#)

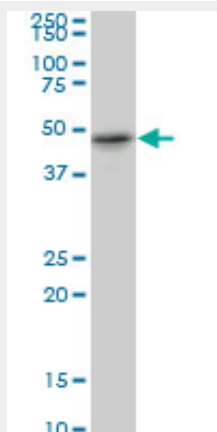
RBMS1 Antibody (monoclonal) (M02) - Images



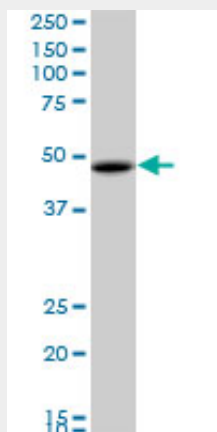
Antibody Reactive Against Recombinant Protein. Western Blot detection against Immunogen (70.07 kDa) .



RBMS1 monoclonal antibody (M02), clone M1 Western Blot analysis of RBMS1 expression in HeLa (Cat # AT3596a)



RBMS1 monoclonal antibody (M02), clone M1. Western Blot analysis of RBMS1 expression in MES-SA/Dx5 ((Cat # AT3596a)



RBMS1 monoclonal antibody (M02), clone M1. Western Blot analysis of RBMS1 expression in SJCRH30 ((Cat # AT3596a)

RBMS1 Antibody (monoclonal) (M02) - Background

This gene encodes a member of a small family of proteins which bind single stranded DNA/RNA. These proteins are characterized by the presence of two sets of ribonucleoprotein consensus sequence (RNP-CS) that contain conserved motifs, RNP1 and RNP2, originally described in RNA binding proteins, and required for DNA binding. These proteins have been implicated in such diverse functions as DNA replication, gene transcription, cell cycle progression and apoptosis. Several transcript variants, resulting from alternative splicing and encoding different isoforms, have been described. A pseudogene for this locus is found on chromosome 12.

RBMS1 Antibody (monoclonal) (M02) - References

Genetic variants at 2q24 are associated with susceptibility to type 2 diabetes. Qi L, et al. Hum Mol Genet, 2010 Jul 1. PMID 20418489. Personalized smoking cessation: interactions between nicotine dose, dependence and quit-success genotype score. Rose JE, et al. Mol Med, 2010 Jul-Aug. PMID 20379614. Reduced expression of the Kinesin-Associated Protein 3 (KIFAP3) gene increases survival in sporadic amyotrophic lateral sclerosis. Landers JE, et al. Proc Natl Acad Sci U S A, 2009 Jun 2. PMID 19451621. Generation and annotation of the DNA sequences of human chromosomes 2 and 4. Hillier LW, et al. Nature, 2005 Apr 7. PMID 15815621. The status, quality, and expansion of the NIH full-length cDNA project: the Mammalian Gene Collection (MGC). Gerhard DS, et al. Genome Res, 2004 Oct. PMID 15489334.