

**RBP4 Antibody (monoclonal) (M05)****Mouse monoclonal antibody raised against a full length recombinant RBP4.****Catalog # AT3602a****Specification**

---

**RBP4 Antibody (monoclonal) (M05) - Product Information**

Application	WB, IHC, E
Primary Accession	<a href="#">P02753</a>
Other Accession	<a href="#">BC020633</a>
Reactivity	Human
Host	mouse
Clonality	Monoclonal
Isotype	IgG1 Kappa
Calculated MW	23010

**RBP4 Antibody (monoclonal) (M05) - Additional Information****Gene ID** 5950**Other Names**

Retinol-binding protein 4, Plasma retinol-binding protein, PRBP, RBP, Plasma retinol-binding protein(1-182), Plasma retinol-binding protein(1-181), Plasma retinol-binding protein(1-179), Plasma retinol-binding protein(1-176), RBP4

**Target/Specificity**

RBP4 (AAH20633.1, 19 a.a. ~ 201 a.a) full-length recombinant protein with GST tag. MW of the GST tag alone is 26 KDa.

**Dilution**

WB~~1:500~1000

IHC~~1:100~500

E~~N/A

**Format**

Clear, colorless solution in phosphate buffered saline, pH 7.2 .

**Storage**

Store at -20°C or lower. Aliquot to avoid repeated freezing and thawing.

**Precautions**

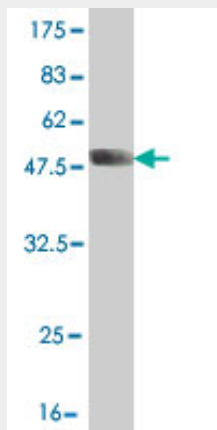
RBP4 Antibody (monoclonal) (M05) is for research use only and not for use in diagnostic or therapeutic procedures.

**RBP4 Antibody (monoclonal) (M05) - Protocols**

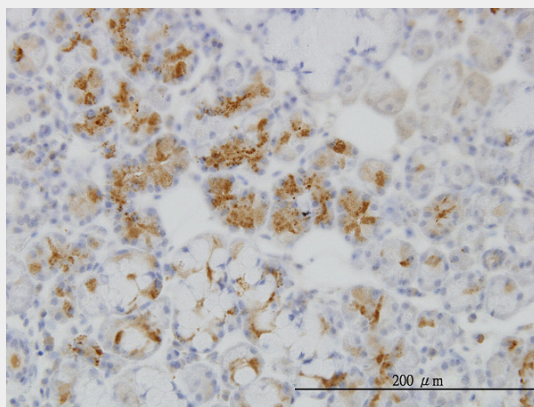
Provided below are standard protocols that you may find useful for product applications.

- [Western Blot](#)
- [Blocking Peptides](#)
- [Dot Blot](#)
- [Immunohistochemistry](#)
- [Immunofluorescence](#)
- [Immunoprecipitation](#)
- [Flow Cytometry](#)
- [Cell Culture](#)

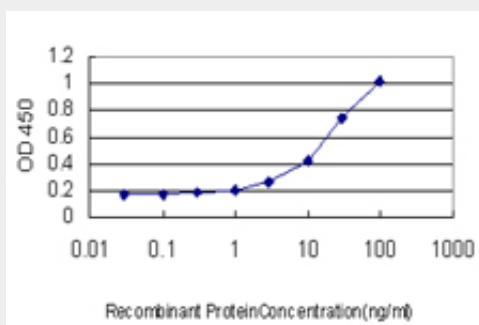
#### RBP4 Antibody (monoclonal) (M05) - Images



Antibody Reactive Against Recombinant Protein. Western Blot detection against Immunogen (45.87 KDa) .



Immunoperoxidase of monoclonal antibody to RBP4 on formalin-fixed paraffin-embedded human salivary gland. [antibody concentration 1 ug/ml]



Detection limit for recombinant GST tagged RBP4 is approximately 1ng/ml as a capture antibody.

**RBP4 Antibody (monoclonal) (M05) - Background**

This protein belongs to the lipocalin family and is the specific carrier for retinol (vitamin A alcohol) in the blood. It delivers retinol from the liver stores to the peripheral tissues. In plasma, the RBP-retinol complex interacts with transthyretin which prevents its loss by filtration through the kidney glomeruli. A deficiency of vitamin A blocks secretion of the binding protein posttranslationally and results in defective delivery and supply to the epidermal cells.

**RBP4 Antibody (monoclonal) (M05) - References**

[Expression and regulation of retinol binding protein 4 mRNA in human adipose tissue in obese and type 2 diabetics] Liu XH, et al. Zhonghua Yi Xue Za Zhi, 2010 May 11. PMID 20646597. Case-control analysis of SNPs in GLUT4, RBP4 and STRA6: association of SNPs in STRA6 with type 2 diabetes in a South Indian population. Nair AK, et al. PLoS One, 2010 Jul 6. PMID 20625434. Decreased retinol binding protein 4 concentrations are associated with cholesterol gallstone disease. Wang SN, et al. J Formos Med Assoc, 2010 Jun. PMID 20610143. Retinol-binding protein 4 levels in obese children and adolescents with glucose intolerance. Yeste D, et al. Horm Res Paediatr, 2010. PMID 20389103. Association of plasma retinol-binding protein 4, adiponectin, and high molecular weight adiponectin with insulin resistance in non-diabetic hypertensive patients. Shim CY, et al. Yonsei Med J, 2010 May. PMID 20376890.