

**RBPSUH Antibody (monoclonal) (M01)**

Mouse monoclonal antibody raised against a partial recombinant RBPJ.

Catalog # AT3603a

**Specification**

---

**RBPSUH Antibody (monoclonal) (M01) - Product Information**

|                   |                           |
|-------------------|---------------------------|
| Application       | WB                        |
| Primary Accession | <a href="#">Q06330</a>    |
| Other Accession   | <a href="#">NM_203284</a> |
| Reactivity        | Human                     |
| Host              | mouse                     |
| Clonality         | Monoclonal                |
| Isotype           | IgG2b Kappa               |
| Calculated MW     | 55637                     |

**RBPSUH Antibody (monoclonal) (M01) - Additional Information**

Gene ID 3516

**Other Names**

Recombining binding protein suppressor of hairless, CBF-1, J kappa-recombination signal-binding protein, RBP-J kappa, RBP-J, RBP-JK, Renal carcinoma antigen NY-REN-30, RBPJ, IGKJRB, IGKJRB1, RBPJK, RBPSUH

**Target/Specificity**

RBPJ (NP\_976029, 3 a.a. ~ 109 a.a) partial recombinant protein with GST tag. MW of the GST tag alone is 26 KDa.

**Dilution**

WB~~1:500~1000

**Format**

Clear, colorless solution in phosphate buffered saline, pH 7.2 .

**Storage**

Store at -20°C or lower. Aliquot to avoid repeated freezing and thawing.

**Precautions**

RBPSUH Antibody (monoclonal) (M01) is for research use only and not for use in diagnostic or therapeutic procedures.

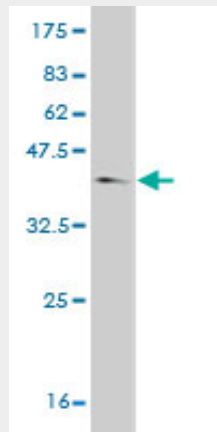
**RBPSUH Antibody (monoclonal) (M01) - Protocols**

Provided below are standard protocols that you may find useful for product applications.

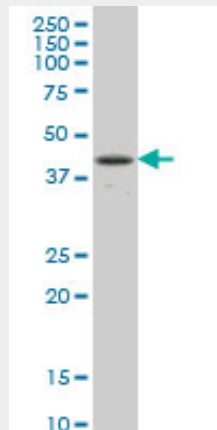
- [Western Blot](#)
- [Blocking Peptides](#)

- [Dot Blot](#)
- [Immunohistochemistry](#)
- [Immunofluorescence](#)
- [Immunoprecipitation](#)
- [Flow Cytometry](#)
- [Cell Culture](#)

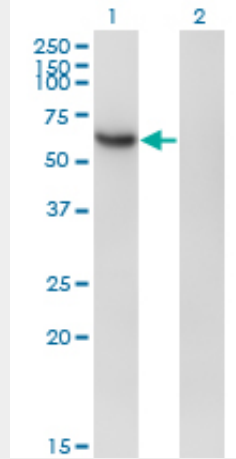
### RBPSUH Antibody (monoclonal) (M01) - Images



Antibody Reactive Against Recombinant Protein. Western Blot detection against Immunogen (37.51 KDa) .



RBPJ monoclonal antibody (M01), clone 4E12 Western Blot analysis of RBPJ expression in Jurkat (Cat # AT3603a )



Western Blot analysis of RBPJ expression in transfected 293T cell line by RBPJ monoclonal antibody (M01), clone 4E12.

Lane 1: RBPJ transfected lysate(54.3 KDa).

Lane 2: Non-transfected lysate.

#### **RBPSUH Antibody (monoclonal) (M01) - References**

Notch target gene deregulation and maintenance of the leukemogenic phenotype do not require RBP-J kappa in Ikaros null mice. Chari S, et al. J Immunol, 2010 Jul 1. PMID 20511547. Genome-wide association study meta-analysis identifies seven new rheumatoid arthritis risk loci. Stahl EA, et al. Nat Genet, 2010 Jun. PMID 20453842. Personalized smoking cessation: interactions between nicotine dose, dependence and quit-success genotype score. Rose JE, et al. Mol Med, 2010 Jul-Aug. PMID 20379614. Genetic risk factors for hepatopulmonary syndrome in patients with advanced liver disease. Roberts KE, et al. Gastroenterology, 2010 Jul. PMID 20346360. Thermodynamic analysis of the CSL x Notch interaction: distribution of binding energy of the Notch RAM region to the CSL beta-trefoil domain and the mode of competition with the viral transactivator EBNA2. Johnson SE, et al. J Biol Chem, 2010 Feb 26. PMID 20028974.