

RCN1 Antibody (monoclonal) (M01)**Mouse monoclonal antibody raised against a full length recombinant RCN1.****Catalog # AT3606a****Specification**

RCN1 Antibody (monoclonal) (M01) - Product Information

Application	WB, E
Primary Accession	Q15293
Other Accession	BC010120
Reactivity	Human
Host	mouse
Clonality	Monoclonal
Isotype	IgG1 kappa
Calculated MW	38890

RCN1 Antibody (monoclonal) (M01) - Additional Information**Gene ID** 5954**Other Names**

Reticulocalbin-1, RCN1, RCN

Target/Specificity

RCN1 (AAH10120, 31 a.a. ~ 331 a.a) full-length recombinant protein with GST tag. MW of the GST tag alone is 26 KDa.

Dilution

WB~~1:500~1000

Format

Clear, colorless solution in phosphate buffered saline, pH 7.2 .

Storage

Store at -20°C or lower. Aliquot to avoid repeated freezing and thawing.

Precautions

RCN1 Antibody (monoclonal) (M01) is for research use only and not for use in diagnostic or therapeutic procedures.

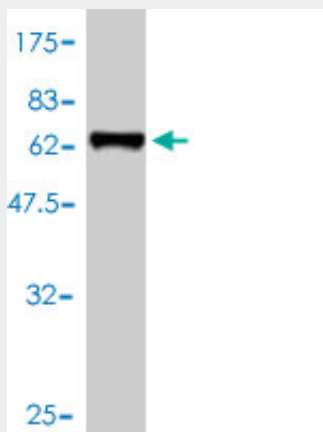
RCN1 Antibody (monoclonal) (M01) - Protocols

Provided below are standard protocols that you may find useful for product applications.

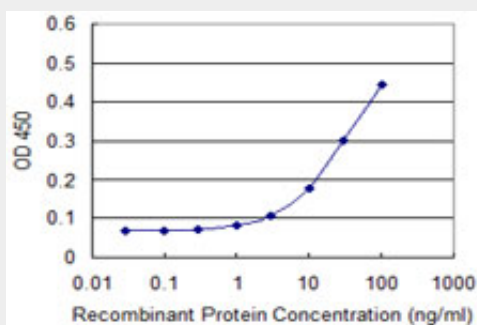
- [Western Blot](#)
- [Blocking Peptides](#)
- [Dot Blot](#)
- [Immunohistochemistry](#)

- [Immunofluorescence](#)
- [Immunoprecipitation](#)
- [Flow Cytometry](#)
- [Cell Culture](#)

RCN1 Antibody (monoclonal) (M01) - Images



Antibody Reactive Against Recombinant Protein. Western Blot detection against Immunogen (58.63 kDa) .



Detection limit for recombinant GST tagged RCN1 is approximately 1ng/ml as a capture antibody.

RCN1 Antibody (monoclonal) (M01) - Background

Reticulocalbin 1 is a calcium-binding protein located in the lumen of the ER. The protein contains six conserved regions with similarity to a high affinity Ca^{+2} -binding motif, the EF-hand. High conservation of amino acid residues outside of these motifs, in comparison to mouse reticulocalbin, is consistent with a possible biochemical function besides that of calcium binding. In human endothelial and prostate cancer cell lines this protein localizes to the plasma membrane.

RCN1 Antibody (monoclonal) (M01) - References

The metastasis efficiency modifier ribosomal RNA processing 1 homolog B (RRP1B) is a chromatin-associated factor. Crawford NP, et al. J Biol Chem, 2009 Oct 16. PMID 19710015. Analysis of Pax6 contiguous gene deletions in the mouse, *Mus musculus*, identifies regions distinct from Pax6 responsible for extreme small-eye and belly-spotting phenotypes. Favor J, et al. Genetics, 2009 Aug. PMID 19474196. Calumenin but not reticulocalbin forms a Ca^{2+} -dependent complex with thrombospondin-1. A potential role in haemostasis and thrombosis. Hansen GA, et al. Mol Cell Biochem, 2009 Jan. PMID 18688696. Novel surface expression of reticulocalbin 1 on bone endothelial cells and human prostate cancer cells is regulated by TNF- α . Cooper CR, et al. J Cell Biochem, 2008 Aug 15. PMID 18561328. A protein-protein interaction network for human inherited ataxias and disorders of Purkinje cell degeneration. Lim J, et al. Cell, 2006 May 19. PMID 16713569.