

**RFC4 Antibody (monoclonal) (M01)****Mouse monoclonal antibody raised against a partial recombinant RFC4.****Catalog # AT3621a****Specification**

---

**RFC4 Antibody (monoclonal) (M01) - Product Information**

Application	WB, IHC, E
Primary Accession	<a href="#">P35249</a>
Other Accession	<a href="#">BC017452</a>
Reactivity	Human
Host	mouse
Clonality	Monoclonal
Isotype	IgG2a Kappa
Calculated MW	39682

**RFC4 Antibody (monoclonal) (M01) - Additional Information****Gene ID** 5984**Other Names**

Replication factor C subunit 4, Activator 1 37 kDa subunit, A1 37 kDa subunit, Activator 1 subunit 4, Replication factor C 37 kDa subunit, RF-C 37 kDa subunit, RFC37, RFC4

**Target/Specificity**

RFC4 (AAH17452, 254 a.a. ~ 363 a.a) partial recombinant protein with GST tag. MW of the GST tag alone is 26 KDa.

**Dilution**

WB~~1:500~1000

**Format**

Clear, colorless solution in phosphate buffered saline, pH 7.2 .

**Storage**

Store at -20°C or lower. Aliquot to avoid repeated freezing and thawing.

**Precautions**

RFC4 Antibody (monoclonal) (M01) is for research use only and not for use in diagnostic or therapeutic procedures.

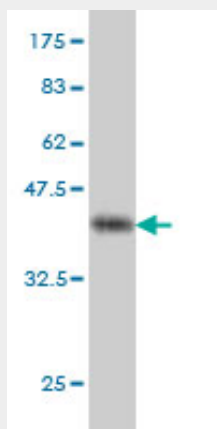
**RFC4 Antibody (monoclonal) (M01) - Protocols**

Provided below are standard protocols that you may find useful for product applications.

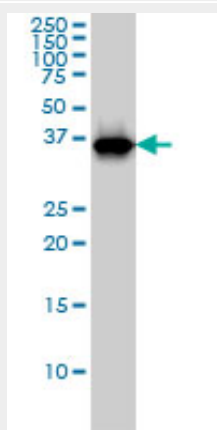
- [Western Blot](#)
- [Blocking Peptides](#)
- [Dot Blot](#)

- [Immunohistochemistry](#)
- [Immunofluorescence](#)
- [Immunoprecipitation](#)
- [Flow Cytometry](#)
- [Cell Culture](#)

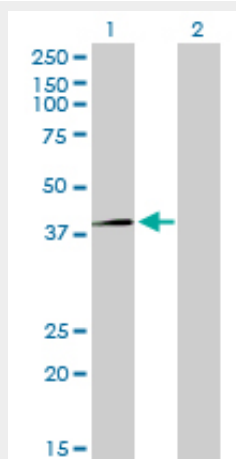
#### RFC4 Antibody (monoclonal) (M01) - Images



Antibody Reactive Against Recombinant Protein. Western Blot detection against Immunogen (37.73 kDa) .

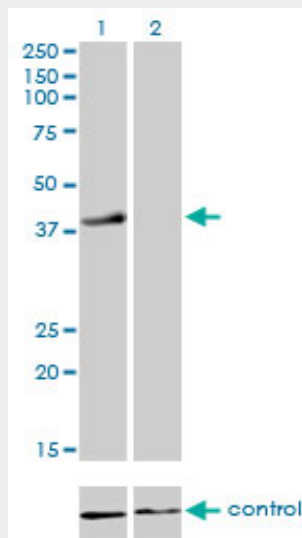


RFC4 monoclonal antibody (M01), clone 1C12 Western Blot analysis of RFC4 expression in K-562 (Cat # AT3621a )

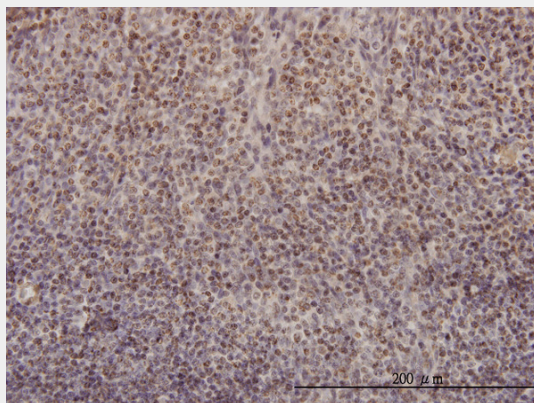


Western Blot analysis of RFC4 expression in transfected 293T cell line by RFC4 monoclonal antibody (M01), clone 1C12.

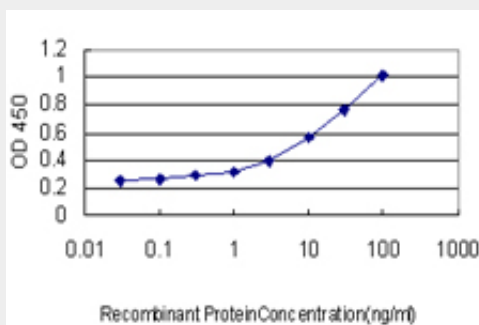
Lane 1: RFC4 transfected lysate(39.7 KDa).  
Lane 2: Non-transfected lysate.



Western blot analysis of RFC4 over-expressed 293 cell line, cotransfected with RFC4 Validated Chimera RNAi (Cat # AT3621a)



Immunoperoxidase of monoclonal antibody to RFC4 on formalin-fixed paraffin-embedded human tonsil. [antibody concentration 3 ug/ml]



Detection limit for recombinant GST tagged RFC4 is approximately 0.3ng/ml as a capture antibody.

#### **RFC4 Antibody (monoclonal) (M01) - Background**

The elongation of primed DNA templates by DNA polymerase delta and DNA polymerase epsilon requires the accessory proteins proliferating cell nuclear antigen (PCNA) and replication factor C (RFC). RFC, also named activator 1, is a protein complex consisting of five distinct subunits of 140, 40, 38, 37, and 36 kD. This gene encodes the 37 kD subunit. This subunit forms a core complex with the 36 and 40 kDa subunits. The core complex possesses DNA-dependent ATPase activity, which was found to be stimulated by PCNA in an in vitro system. Alternatively spliced transcript variants encoding the same protein have been reported.

#### **RFC4 Antibody (monoclonal) (M01) - References**

Polymorphisms in the base excision repair pathway and graft-versus-host disease. Arora M, et al. Leukemia, 2010 Aug. PMID 20574454. Variation within DNA repair pathway genes and risk of multiple sclerosis. Briggs FB, et al. Am J Epidemiol, 2010 Jul 15. PMID 20522537. Association between genetic variants in the base excision repair pathway and outcomes after hematopoietic cell transplantations. Thyagarajan B, et al. Biol Blood Marrow Transplant, 2010 Aug. PMID 20226869. A genome-wide association study reveals variants in ARL15 that influence adiponectin levels. Richards JB, et al. PLoS Genet, 2009 Dec. PMID 20011104. Defining the human deubiquitinating enzyme interaction landscape. Sowa ME, et al. Cell, 2009 Jul 23. PMID 19615732.