

**RGS2 Antibody (monoclonal) (M01)****Mouse monoclonal antibody raised against a partial recombinant RGS2.****Catalog # AT3628a****Specification**

---

**RGS2 Antibody (monoclonal) (M01) - Product Information**

Application	WB, IHC, E
Primary Accession	<a href="#">P41220</a>
Other Accession	<a href="#">BC007049</a>
Reactivity	Human
Host	mouse
Clonality	Monoclonal
Isotype	IgG2a Kappa
Calculated MW	24382

**RGS2 Antibody (monoclonal) (M01) - Additional Information****Gene ID** 5997**Other Names**

Regulator of G-protein signaling 2, RGS2, Cell growth-inhibiting gene 31 protein, G0/G1 switch regulatory protein 8, RGS2, GOS8

**Target/Specificity**

RGS2 (AAH07049, 111 a.a. ~ 211 a.a) partial recombinant protein with GST tag. MW of the GST tag alone is 26 KDa.

**Dilution**

WB~~1:500~1000

**Format**

Clear, colorless solution in phosphate buffered saline, pH 7.2 .

**Storage**

Store at -20°C or lower. Aliquot to avoid repeated freezing and thawing.

**Precautions**

RGS2 Antibody (monoclonal) (M01) is for research use only and not for use in diagnostic or therapeutic procedures.

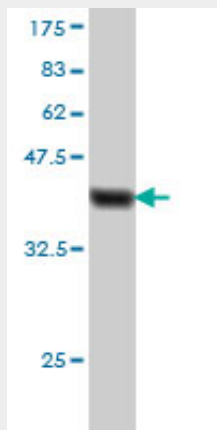
**RGS2 Antibody (monoclonal) (M01) - Protocols**

Provided below are standard protocols that you may find useful for product applications.

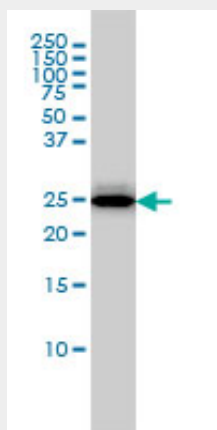
- [Western Blot](#)
- [Blocking Peptides](#)
- [Dot Blot](#)

- [Immunohistochemistry](#)
- [Immunofluorescence](#)
- [Immunoprecipitation](#)
- [Flow Cytometry](#)
- [Cell Culture](#)

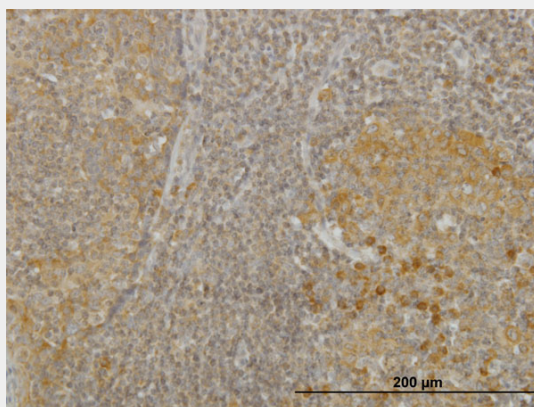
## RGS2 Antibody (monoclonal) (M01) - Images



Antibody Reactive Against Recombinant Protein. Western Blot detection against Immunogen (36.74 kDa) .

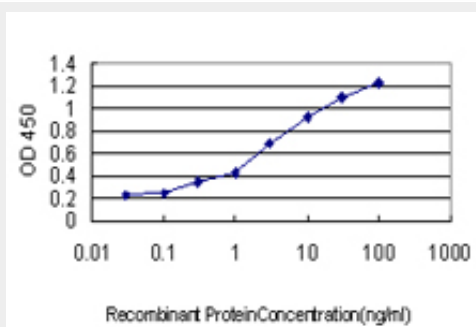


RGS2 monoclonal antibody (M01), clone 4C4 Western Blot analysis of RGS2 expression in MCF-7 (Cat # AT3628a )



Immunoperoxidase of monoclonal antibody to RGS2 on formalin-fixed paraffin-embedded human

tonsil. [antibody concentration 3 ug/ml]



Detection limit for recombinant GST tagged RGS2 is approximately 0.1ng/ml as a capture antibody.

### **RGS2 Antibody (monoclonal) (M01) - Background**

Regulator of G protein signaling (RGS) family members are regulatory molecules that act as GTPase activating proteins (GAPs) for G alpha subunits of heterotrimeric G proteins. RGS proteins are able to deactivate G protein subunits of the Gi alpha, Go alpha and Gq alpha subtypes. They drive G proteins into their inactive GDP-bound forms. Regulator of G protein signaling 2 belongs to this family. The protein acts as a mediator of myeloid differentiation and may play a role in leukemogenesis.

### **RGS2 Antibody (monoclonal) (M01) - References**

1.Semi-quantitative measurement of specific proteins in human cumulus cells using reverse phase protein array.Puard V, Tranchant T, Cadoret V, Gauthier C, Reiter E, Guerif F, Royere D.Reprod Biol Endocrinol. 2013 Oct 22;11(1):100.2.Role of JAK2-STAT3 in TLR2-mediated tissue factor expression.Park DW, Lyu JH, Kim JS, Chin H, Bae YS, Baek SH.J Cell Biochem. 2012 Dec 13. doi: 10.1002/jcb.24472.3.RGS2 is a negative regulator of STAT3-mediated Nox1 expression.Lee HK, Park DW, Bae JH, Kim HJ, Shin DG, Park JS, Lee JG, Lee SJ, Bae YS, Baek SH.Cell Signal. 2011 Nov 18.4.Chromatin modifications induced by PML-RAR{alpha} repress critical targets in leukemogenesis as analyzed by ChIP-Chip.Hoemme C, Peerzada A, Behre G, Wang Y, McClelland M, Nieselt K, Zschunke M, Disselhoff C, Agrawal S, Isken F, Tidow N, Berdel WE, Serve H, Muller-Tidow C.Blood. 2008 Mar 1;111(5):2887-95. Epub 2007 Nov 16.